

BAROID ppm LOG

WELL SOLE NO. 1
 COMPANY SHELL DEV. (AUST.) P/L
 FIELD GIPPSLAND BASIN
 COUNTY VIC P/9 STATE VICTORIA

INTERVAL LOGGED 975 FT TO 3703 FT
 DATE LOGGED JAN. 31, 1973 TO FEB. 5, 1973
 DEPTH MEASURED FROM KB

SUPERVISING ENGINEER D. L. GEORGE
 P. N. ARONETZ UNIT NO 8809
 TYPE MUDS SEAWATER / NATIVE TO 2230 FT
 LIGNOSULFONATE TO 3703 FT

LEGEND

ABBREVIATIONS

NB NEW BIT
 NCB NEW CORE BIT
 CO CIRCULATED OUT
 DST DRILL STEM TEST
 LAT LOGGED AFTER TRIP
 TG TRIP GAS
 NR NO RETURNS
 DS DIRECTIONAL SURVEY
 DC DEPTH CORRECTION

MUD CHARACTERISTICS
 W WEIGHT, LBS/GAL LBS/CU FT
 V VISCOSITY, API, SECONDS
 F FILTRATE, API, CC'S
 CK FILTER CAKE
 S SALINITY, PPM CL- OPG CL-
 Rm MUD-RESISTIVITY, OHM-METER
 RmC MUD-CAKE RESISTIVITY, OHM-METER
 Rmf MUD-FILTRATE RESISTIVITY, OHM-METER

LITHOLOGY

SAND [Symbol] LIMESTONE [Symbol]
 SHALE [Symbol] OOLITIC LIMESTONE [Symbol]
 CLAY [Symbol] DOLOMITE [Symbol]
 CHERT [Symbol] GYPSUM ANHYDRITE [Symbol]
 SALT [Symbol] COAL OR LIGNITE [Symbol]
 SILTSTONE [Symbol] GRANITE WASH [Symbol]
 CONGLOMERATE [Symbol] MARL [Symbol]

DRILLING RATE

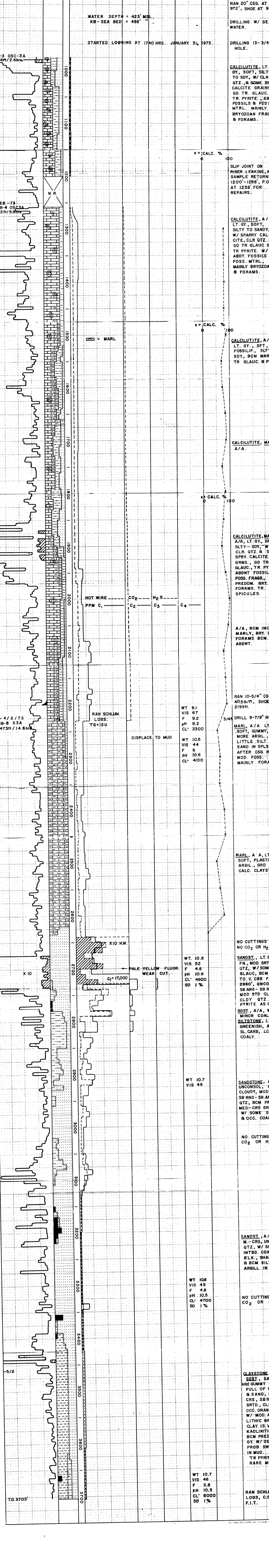
FT. PER HR.
 MIN. PER FT.

ppm HYDROCARBONS IN MUD M=1000

C₁ C₂ C₃ C₄ C₅₊

CUTTINGS ANALYSIS

TOTAL GAS
 METHANE
 LIQUID HYDROCARBONS (C₂₊)



RAN 20" CSG. AT 972', SHOE AT 992'

DRILLING W/ SEA WATER.

DRILLING 13-3/4" HOLE.

CALCILUTITE, LT. GY., SOFT, SILTY TO SDY, W/ CLR QTZ., & SOME SPR. CALCITE GRAINS. GD. TR. GLAUC., TR. PYRITE., ABDT. FOSSILS & FOSS. MTRL. MAINLY BRYOZOAN FRAGS & FORAMS.

SLIP JOINT ON RISER LEAKING, NO. SAMPLE RETURNS 1200'-1258', P.O.H. AT 1258' FOR REPAIRS.

CALCILUTITE, A/A LT. GY., SOFT, SILTY TO SANDY, W/ SPARRY CALCITE, CLR QTZ & GD TR GLAUC GRNS TR PYRITE. W/ ABDT. FOSSILS & FOSS. MTRL., MAINLY BRYOZOANS & FORAMS.

CALCILUTITE, A/A LT. GY., SFT., FOSSILIF., SILTY-SDY, BCM MARLY, TR GLAUC. & PYR.

CALCILUTITE, MARL A/A.

CALCILUTITE, MARL A/A, LT. GY., SFT., SILTY-SDY, W/ CLR. SPRY. CALCITE GRNS., GD TR GLAUC., TR. PYR., ABDNT FOSSILS & FOSS. FRAGS., PREDOM. BRY. & FORAMS. TR. SPICULES.

A/A, BCM INCR. MARLY, BRY. DCR. FORAMS BCM. V. ABDNT.

RAN 10-3/4" CSG. 40.5lb/ft, SHOE AT 2199ft.

DRILL 9-7/8" HOLE. MARL, A/A LT. GY., SOFT, GUMMY, BCM MORE ARGIL., LITTLE SILT. OR SAND IN SPLS. AFTER CSG. RUN. MOD. FOSS. W/ MAINLY FORAMS.

MARL, A/A, LT. GY., SOFT, PLASTIC, ARGIL., GRD TO CALC. CLAYSTN.

NO CUTTINGS GAS NO CO₂ OR H₂S GAS
 SANDST., LT. GY., FN., MOD SRTD QTZ, W/ SOME GLAUC, BCM CRS TO V. CRS FROM 2660', UNCONSOL SB ANG - SB RND. MOD STD CLR & CLDY QTZ., SM. PYRITE AS CMT.

SDST. A/A, W/ MINOR COAL, & SILTSTONE, LT. GY., GREENISH, ARGIL. SL. CARB., LCLY. COALY.

SANDSTONE, A/A, UNCONSOL., CLR & CLOUDY, MOD SRTD SB RND - SB ANG. QTZ, BCM PREDOM. MED-CRS GRAINED. W/ SOME SLTST. & OCC. COALS.

NO CUTTINGS GAS CO₂ OR H₂S.

SANDST. A/A, M.-CRS. UNCONS. QTZ, W/ SOME INTBD. COALS, BLK., SHALEY, & BCM SILTY & ARGILL. IN PT.

NO CUTTINGS GAS CO₂ OR H₂S.

CLAYSTONE, V. ARG. SDST., SAMPLES ARE GUMMY CLAY, FULL OF QTZ SLT & SAND, FN-V. CRS, SBRND, M. SRTD. CLR & CLD. OCC. ORANGE GNS. W/ MOD. ABDT. LITHIC GRAINS. CLAY IS V. LT. GY., KAOLINITE, SOFT BCM PREDOM. M. GY. W/ DEPTH. PROB. SWELLING IN MUD. TR PYRITE, RARE MICA.

RAN SCHLUMBERGER LOGS, C.S.T. & F.I.T.