

GEOGRAM*

(Synthetic Seismogram)

Company: ESSO AUSTRALIA LTD
 Well: SNAPPER - 6
 Field: WILDCAT
 Country: AUSTRALIA
 Reference No: 68001
 Date Logged: 14/07/88
 Date Processed: 22/07/88
 Location: 038 37 55.871 S 148 00' 41.887 E
 Elevation: NS, 210 M DF: 20.7 M GL: -55.0 M
 Permanent Datum: MSL
 Depth Unit: METRES

LOG INFORMATION
 ANALYST: M. SANCHEZ
 CENTRE: SVJ
 SCALE: 1:2
 LOGGING DATUM: ELEVATION ABOVE MEAN SEA LEVEL
 SURFACE REFERENCE DATUM: MSL
 SEA FLOOR: -55.0 M
 SENSITIVE CALIBRATION CHECK SHOT: YES
 SENSITIVE EDITED BY ANALYST: YES
 TWO-WAY TIME SAMPLE INTERVAL: 2 ms
 ENVIRONMENT: offshore

True Vertical Depth Correction Applied: NO
 Section of True Vertical Depth Data Available: YES

Well	Date	Tool	Bit Size	Casing Size	Top	Bottom
1	27/07/88	6.5	17 1/2" Ø 508 M	27 3/4" Ø 714 M	NS	795 M
2	14/07/88	5.5	13 1/4" Ø 303 M	13 3/8" Ø 344 M	794 M	2881 M

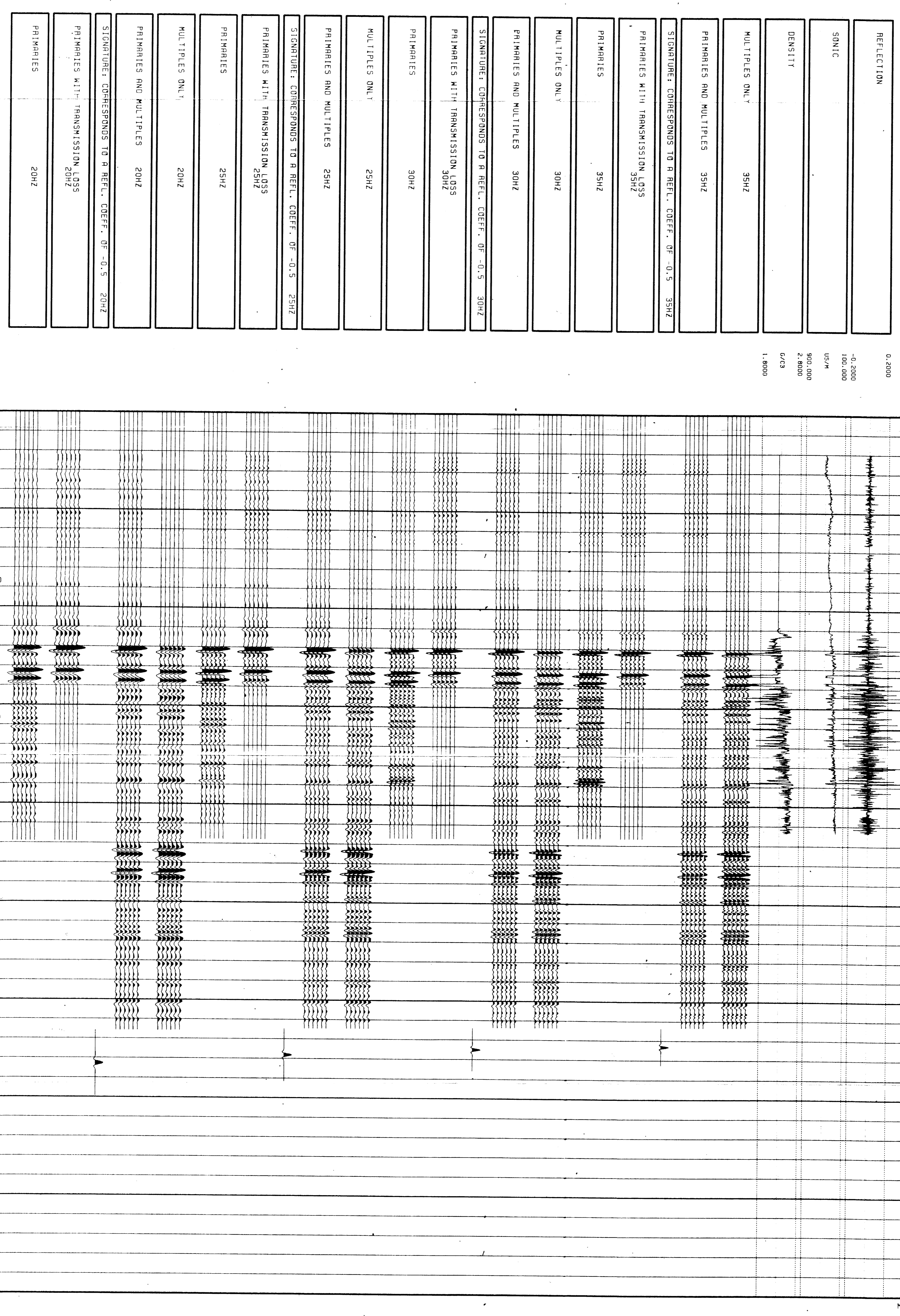
GEOGRAM MODEL ASSUMPTIONS
 Equal time along model of horizontal slowness
 Phase acoustic velocity of normal incidence
 No intrinsic attenuation
 POLARITY
 An outgoing wave, reflected by an increase in acoustic impedance with depth, is displayed as a white trough under normal polarity.
 SIGNATURES
 All signatures displayed in the Geogram results correspond to a wavelet convolved with a reflection coefficient of -0.5 (A decrease in acoustic impedance with depth).

Scale: log interval 200 - 3003 meters below DF
 Density log interval 1988 - 3003 meters below DF
 Time Scale = 375 m/sec

CLIENT : ESSO AUSTRALIA LTD.
 FIELD : WILDCAT
 WELL : SNAPPER - 6

GEOGRAM FROM WST RICKER WAVELETS ZERO PHASE NORMAL POLARITY

SNAPPER - 6



CLIENT : ESSO AUSTRALIA LTD.
 FIELD : WILDCAT
 WELL : SNAPPER - 6

GEOGRAM FROM WST RICKER WAVELETS ZERO PHASE REVERSE POLARITY

SNAPPER - 6

