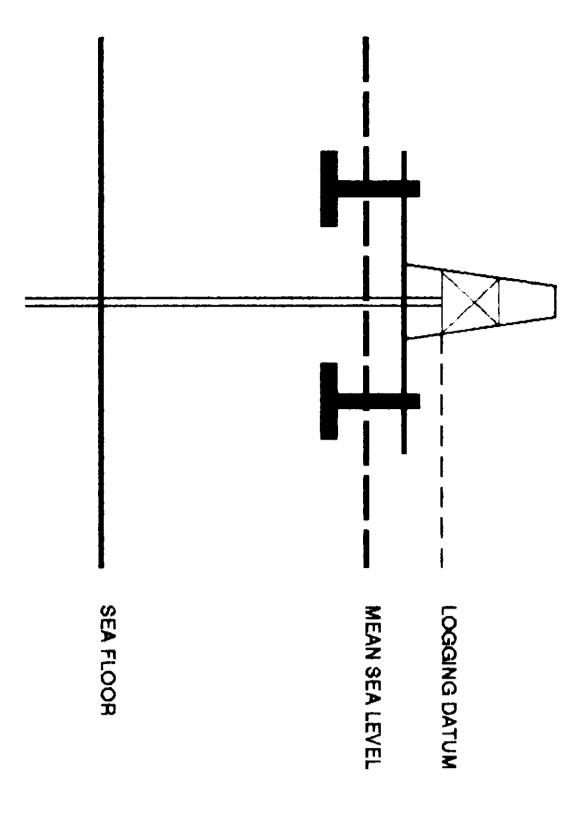


VERTICAL SEISMIC PROFILE

ZERO OFFSET VSP
AMPLITUDE RECOVERY
PLOT 2

Company: ESSO AUSTRALIA LTD
Well: SMILER-1
Field: WILDCAT
Country: AUSTRALIA
Reference No: SVJ561131/561132 Interval: 2014.00 to 182.00
Date Logged: 13-JULY-1995 Date Processed: 21-JULY-1995
Location: O88 28 55.18" S 148 23 17.09" E
Elevations: KB: 25.00 DF: 24.70 QI: -122.00
Permanent Datum: MSL Depth Units: METRES
FIELD RECORDING: Engineer: RICHARDSON HODGKINSON VISA Program Version: 703427
COMPUTATION: Analyst: A WILSON Country: SVJ Baseline: 203
ELEVATION ABOVE MEAN SEA LEVEL
Logging Datum: 25.00
Seismic Reference Datum: 0.00



Total Number of Levels: 29

Depth Reference: SRD

Time Reference: SRD

Run	SHA	Tool Type	Run Start Depth	Run End Depth	Tool Type	Run Start Depth	Run End Depth
ONE	04-07-1996	AS-DL	17.5 M	12.26 M	AS-DL	17.5 M	12.26 M
TWO	12-07-1996	DL-DL-AS	12.26 M	7.6 M	DL-DL-AS	12.26 M	7.6 M

Time Reference: SRD

Run	SHA	Tool Type	Run Start Depth	Run End Depth	Tool Type	Run Start Depth	Run End Depth
ONE	13-07-1996	50 M	50 M	5 M BELOW MSL	50 M	10 M BELOW MSL	89 DEG
TWO	13-07-1996	50 M	50 M	5 M BELOW MSL	50 M	10 M BELOW MSL	89 DEG

REMARKS:

The well name, location and borehole reference data were furnished by the customer.

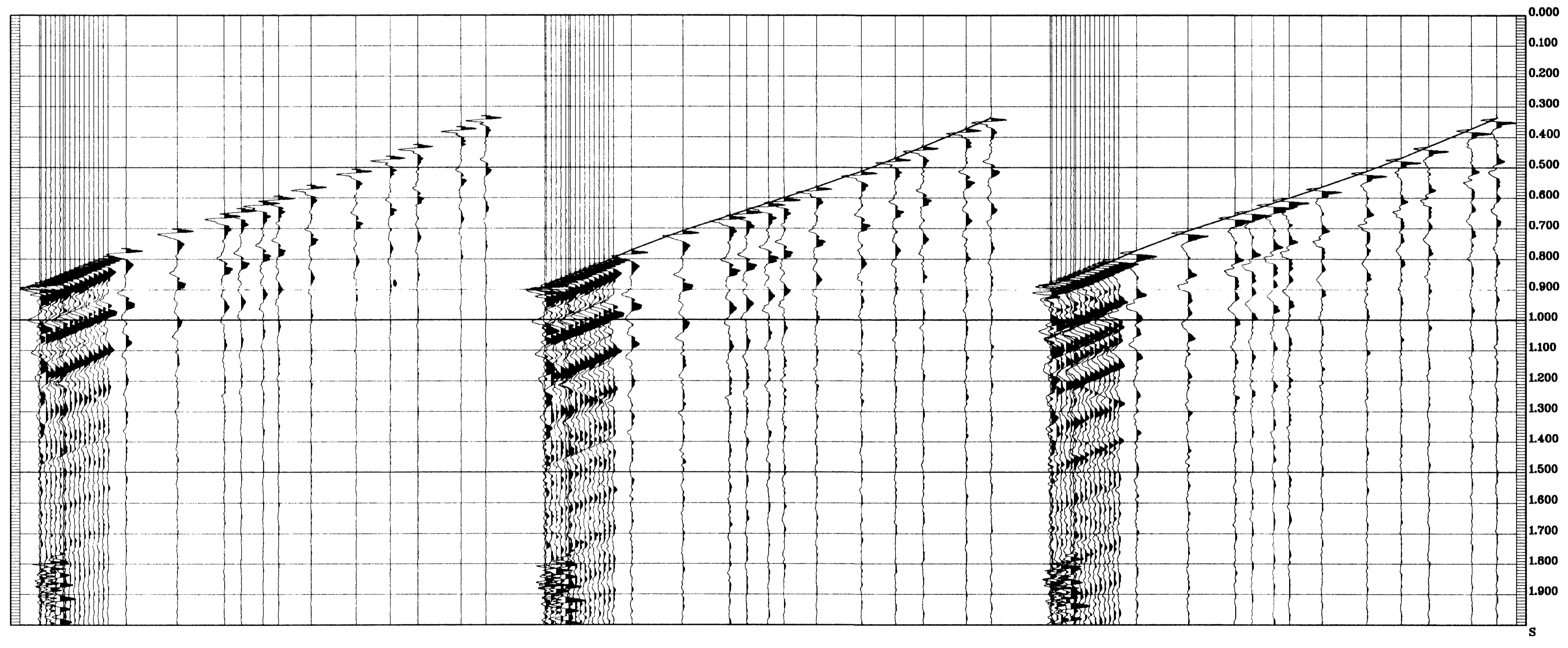
All interpretations are opinions based on inferences from electrical or other measurements and we cannot, and do not guarantee the accuracy or correctness of any interpretations, and we shall not, except in the case of gross or willful negligence on our part, be liable or responsible for any loss, costs, damages or expenses incurred or sustained by anyone resulting from any interpretations made by any of our officers, agents or employees. These interpretations are also subject to Clause 4 of our General Terms and Conditions as set out in our current Price Schedule.

*** AMPLITUDE RECOVERY ***
VERTICAL COMPONENT
PROCESSING SEQUENCE:
MEAN STACK APPLIED
SERIAL CORRECTION TO MSL APPLIED
BAND PASS FILTER : 5-100 HZ
NORMALISATION GATE : 100 MS
TIME VARYING GAIN : 1/70**1.00
VERTICAL SCALE : 10 CM/SEC
POLARITY (SEGG) : REVERSE

*** AMPLITUDE RECOVERY ***
VERTICAL COMPONENT
PROCESSING SEQUENCE:
MEAN STACK APPLIED
SERIAL CORRECTION TO MSL APPLIED
BAND PASS FILTER : 5-100 HZ
NORMALISATION GATE : 100 MS
TIME VARYING GAIN : 1/70**1.00
VERTICAL SCALE : 10 CM/SEC
POLARITY (SEGG) : NORMAL

*** STACKED DATA ***
VERTICAL COMPONENT
PROCESSING SEQUENCE:
MEAN COHERENCY STACK APPLIED
NO STATIC CORRECTION APPLIED
BANDPASS FILTER : 5 - 140 HZ
VERTICAL SCALE : 10 CM/SEC
POLARITY (SEGG) : NORMAL

RAW DEPTH M	TRUE VERTICAL DEPTH MSL M	TRANSIT TIME S	LEVEL NO	MAX AMPLITUDE	MIN AMPLITUDE
7440	7170	6.348	29	111.8	-87.15
8460	8210	6.379	28	110.81	-84.51
10280	10010	6.432	27	110.01	-83.41
11410	11180	6.469	26	109.80	-84.71
12940	12390	6.515	25	109.69	-86.12
14720	14470	6.566	24	101.86	-80.38
16060	15810	6.601	23	97.97	-80.52
16740	16730	6.616	22	91.01	-76.87
17940	17790	6.642	21	82.58	-75.90
18300	18100	6.660	20	82.68	-76.78
20210	20060	6.708	19	80.59	-74.08
22440	22260	6.773	18	88.87	-72.38
22910	22810	6.788	17	86.76	-80.80
23000	22900	6.791	16	84.11	-79.12
23410	23310	6.811	15	84.11	-79.12
23410	23310	6.811	14	82.38	-80.81
23670	23570	6.827	13	82.38	-80.81
23670	23570	6.827	12	82.38	-80.81
23670	23570	6.827	11	82.38	-80.81
23670	23570	6.827	10	82.38	-80.81
23670	23570	6.827	9	82.38	-80.81
23670	23570	6.827	8	82.38	-80.81
23670	23570	6.827	7	82.38	-80.81
23670	23570	6.827	6	82.38	-80.81
23670	23570	6.827	5	82.38	-80.81
23670	23570	6.827	4	82.38	-80.81
23670	23570	6.827	3	82.38	-80.81
23670	23570	6.827	2	82.38	-80.81
23670	23570	6.827	1	82.38	-80.81
25010	25010	6.708	19	90.59	-74.08
25440	25260	6.773	18	88.87	-72.38
25910	25810	6.788	17	86.76	-80.80
26000	25900	6.791	16	84.11	-79.12
26410	26310	6.811	15	84.11	-79.12
26410	26310	6.811	14	82.38	-80.81
26670	26570	6.827	13	82.38	-80.81
26670	26570	6.827	12	82.38	-80.81
26670	26570	6.827	11	82.38	-80.81
26670	26570	6.827	10	82.38	-80.81
26670	26570	6.827	9	82.38	-80.81
26670	26570	6.827	8	82.38	-80.81
26670	26570	6.827	7	82.38	-80.81
26670	26570	6.827	6	82.38	-80.81
26670	26570	6.827	5	82.38	-80.81
26670	26570	6.827	4	82.38	-80.81
26670	26570	6.827	3	82.38	-80.81
26670	26570	6.827	2	82.38	-80.81
26670	26570	6.827	1	82.38	-80.81
28110	28060	6.708	19	90.59	-74.08
28440	28260	6.773	18	88.87	-72.38
28910	28810	6.788	17	86.76	-80.80
29000	28900	6.791	16	84.11	-79.12
29410	29310	6.811	15	84.11	-79.12
29410	29310	6.811	14	82.38	-80.81
29670	29570	6.827	13	82.38	-80.81
29670	29570	6.827	12	82.38	-80.81
29670	29570	6.827	11	82.38	-80.81
29670	29570	6.827	10	82.38	-80.81
29670	29570	6.827	9	82.38	-80.81
29670	29570	6.827	8	82.38	-80.81
29670	29570	6.827	7	82.38	-80.81
29670	29570	6.827	6	82.38	-80.81
29670	29570	6.827	5	82.38	-80.81
29670	29570	6.827	4	82.38	-80.81
29670	29570	6.827	3	82.38	-80.81
29670	29570	6.827	2	82.38	-80.81
29670	29570	6.827	1	82.38	-80.81



COMPANY: ESSO AUSTRALIA LTD.
FIELD: WILDCAT
WELL: SMILER-1
COUNTRY: AUSTRALIA