

SEISMIC CALIBRATION LOG

(Adjusted Continuous Velocity Log)



Company: ESSO AUSTRALIA LTD.

Well: SAWBELLY-1

Field: WILDCAT

Country: AUSTRALIA

Reference No: 540770

Date Logged: 22-03-90

Location: 38 22 31.07 S

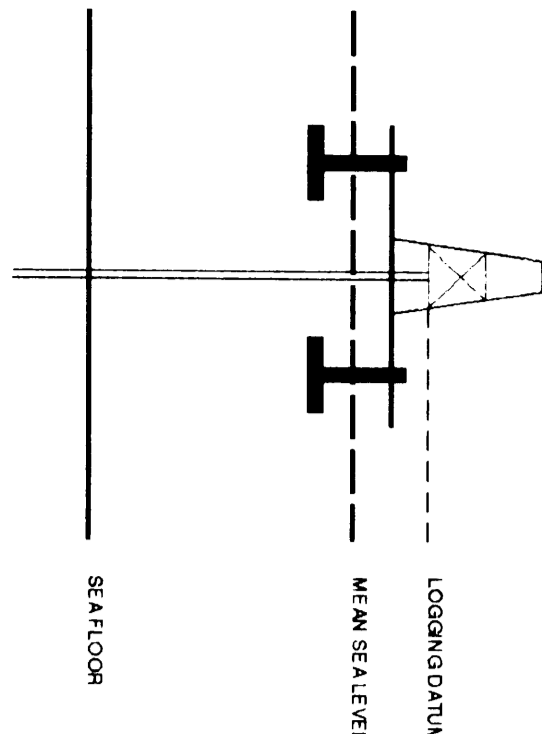
Elevations: KB: 21.00 DF: 20.70 GL: -63.00

Permanent Datum: MSI

Field Recording: A. HERNANDEZ

Operator: K. MICHAEL

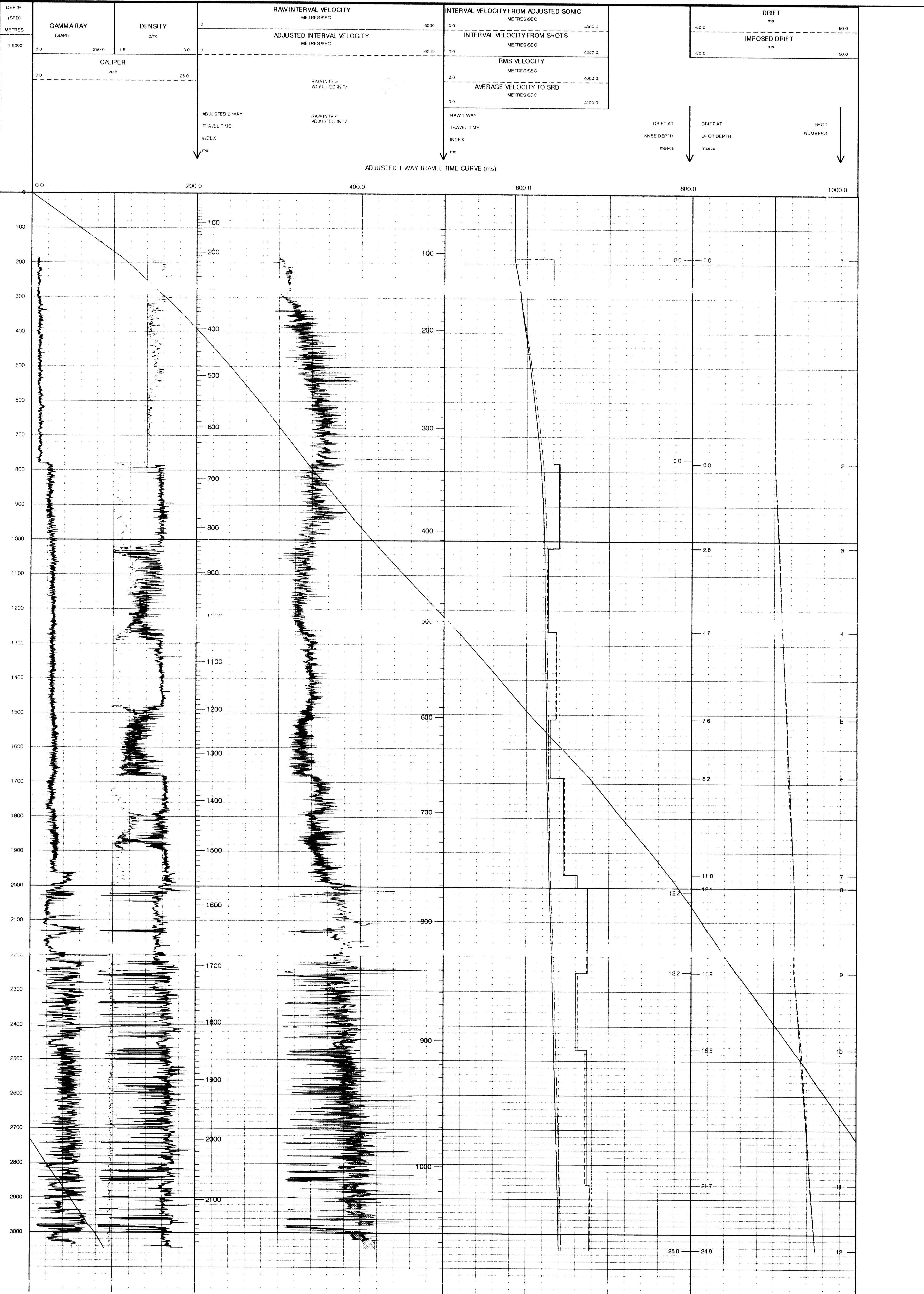
Logging Datum: 21.00
Seismic Reference Datum: 0.00



Total Number of Levels: 11

SRD	SRD	SRD
1	2	3
20-03-90	20-03-90	20-03-90
40M	40M	40M
4.8M BELOW SL	4.8M BELOW SL	4.8M BELOW SL
42	42	42

The well name, location and borehole reference data were furnished by the customer.
All interpretations are opinions based on inferences from electrical or other measurements and we cannot and do not guarantee the accuracy or completeness of any interpretations and we shall not, except in the case of gross or willful negligence on our part, be liable or responsible for any loss, costs, damages or expenses incurred or sustained by anyone resulting from any interpretations made by any of our officers, agents or employees. These interpretations are also subject to Clause 4 of our General Terms and Conditions as set out in our current Price Schedule.



COMPANY: ESSO AUSTRALIA LTD.
FIELD: WILDCAT
WELL: SAWBELLY-1
COUNTRY: AUSTRALIA

