

Schlumberger
SYDNEY LOG INTERPRETATION CENTRE



GEOGRAM*

(Synthetic Seismogram)

Company: LASMO ENERGY AUSTRALIA LTD
 Well: PATRICIA - 1
 Field: PATRICIA
 Country: AUSTRALIA
 Reference No: 570705 Interval: 445.00 to 885.00
 Date Logged: 04/07/87 Date Processed: 06/07/87
 Location: 039° 01' 53.23" S 149° 26' 48.82" E
 Elevations: KB: 22.0 M DF: 217 M GL: -51.0 M
 Permanent Datum: MSL Depth Units: METRES

LOG INFORMATION

FIELD RECORDING: Engineer: K. MULLEN Location: VEA Program Version: 28.485
 COMPUTATION: Analyst: M. SANDERS Centre: SVJ Baseline: 084/2844
 Logging Datum: ELEVATION ABOVE MEAN SEA LEVEL
 Seismic Reference Datum: 22 M MSL
 Ground Level: -51 M
 Sonic Calibration By Check Shot: YES Sonic Edited By Analyst: YES
 Two-Way Time Sample Interval: 2 ms Environment: offshore

True Vertical Depth Corrections Applied
 Source of True Vertical Depth Data:
 Maximum Hole Deviation:

Run	Date	Tool Type	Bit Size / Depth	Casing Size / Depth	Top Depth	Bottom Depth
1	28/08/87	BHC	17 1/2" @ 647 M	20" @ 218 M	28	642
2	09/07/87	SLS	12 1/4" @ 888 M	13 3/8" @ 481 M	481 M	888 M
VSP	Date	Gun	Hydro	Gun	Hydrophone	Gun
Run		Offset	Offset	Elevation	Elevation	Azimuth
1	04/07/87	80 M	80 M	5 M BELOW MSL	10 M BELOW MSL	245 °

GEOGRAM MODEL ASSUMPTIONS

Equal time slice model of horizontal plane layers.
 Plane acoustic waves at normal incidence.
 No intrinsic attenuation.
POLARITY
 An outgoing wave, reflected by an increase in acoustic impedance with depth, is displayed as a white trough under normal polarity.
SIGNATURES
 All signatures displayed in the Geogram results correspond to a wavelet convolved with a reflection coefficient of -0.5 (A decrease in acoustic impedance with depth).

40 HZ

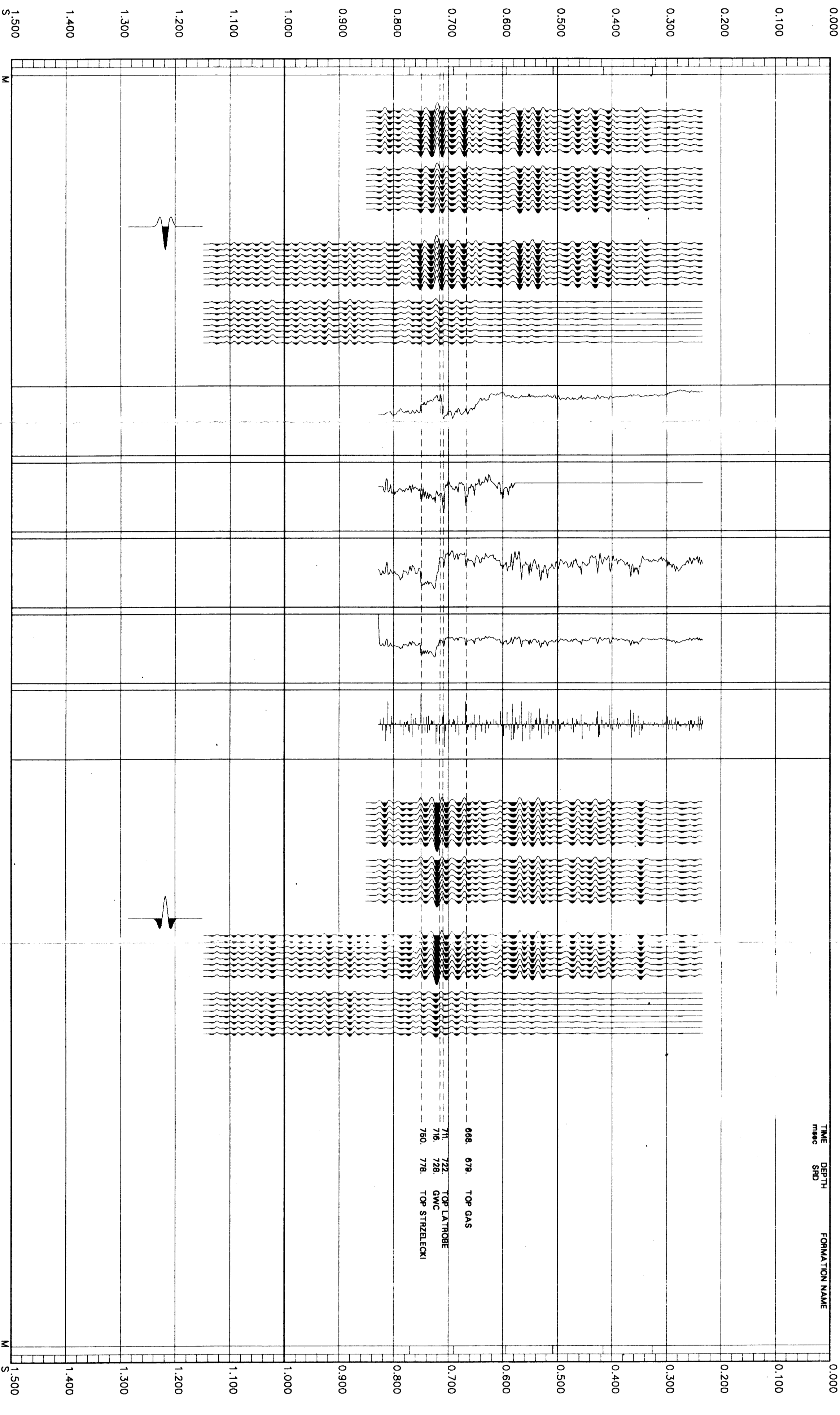
FOLD HERE

The well name, location and borehole reference data were furnished by the customer.

All interpretations are opinions based on inferences from electrical or other measurements and we cannot, and do not guarantee the accuracy or correctness of any interpretations, and we shall not, except in the case of gross or willful negligence on our part, be liable for any loss, costs, damages or expenses incurred or sustained by any person in reliance on any interpretation or report made by any of our officers, agents or employees. These interpretations are also subject to Clause 4 of our General Terms and Conditions as set out in our current Price Schedule.

** GEOGRAM **
 40 HERTZ ZERO PHASE
 RICKER WAVELET
 PATRICIA - 1

PRIMARIES ONLY	0.000 GAPI
PRIMARIES AND MULTIPLES	200.000 GAPI
PRIMARIES WITH TRANSMISSION LOSS	1.800 G/C3
NORMAL POLARITY	2.800 G/C3
NORMAL POLARITY	600.000 US/M
PRIMARIES ONLY	200.000 US/M
PRIMARIES AND MULTIPLES	0.000 F50C
PRIMARIES WITH TRANSMISSION LOSS	40000.000 F50C
REVERSE POLARITY	-0.200
REVERSE POLARITY	0.200
MULTIPLES ONLY	
MULTIPLES AND MULTIPLES	
REVERSE POLARITY	
REVERSE POLARITY	
PRIMARIES ONLY	
PRIMARIES AND MULTIPLES	
PRIMARIES WITH TRANSMISSION LOSS	
REVERSE POLARITY	
REVERSE POLARITY	
PRIMARIES ONLY	
PRIMARIES AND MULTIPLES	
PRIMARIES WITH TRANSMISSION LOSS	
NORMAL POLARITY	
NORMAL POLARITY	



COMPANY LASMO ENERGY AUSTRALIA LTD
 FIELD PATRICIA
 WELL PATRICIA - 1
 COUNTRY AUSTRALIA

