

PLATE 3: 2401 metres

Reflected Light

This plate shows an exinite-rich coal. Exinite (dark brown) is associated with vitrinite (grey) and inertinite (white, bottom right).

Field Dimensions 0.26 mm x 0.18 mm

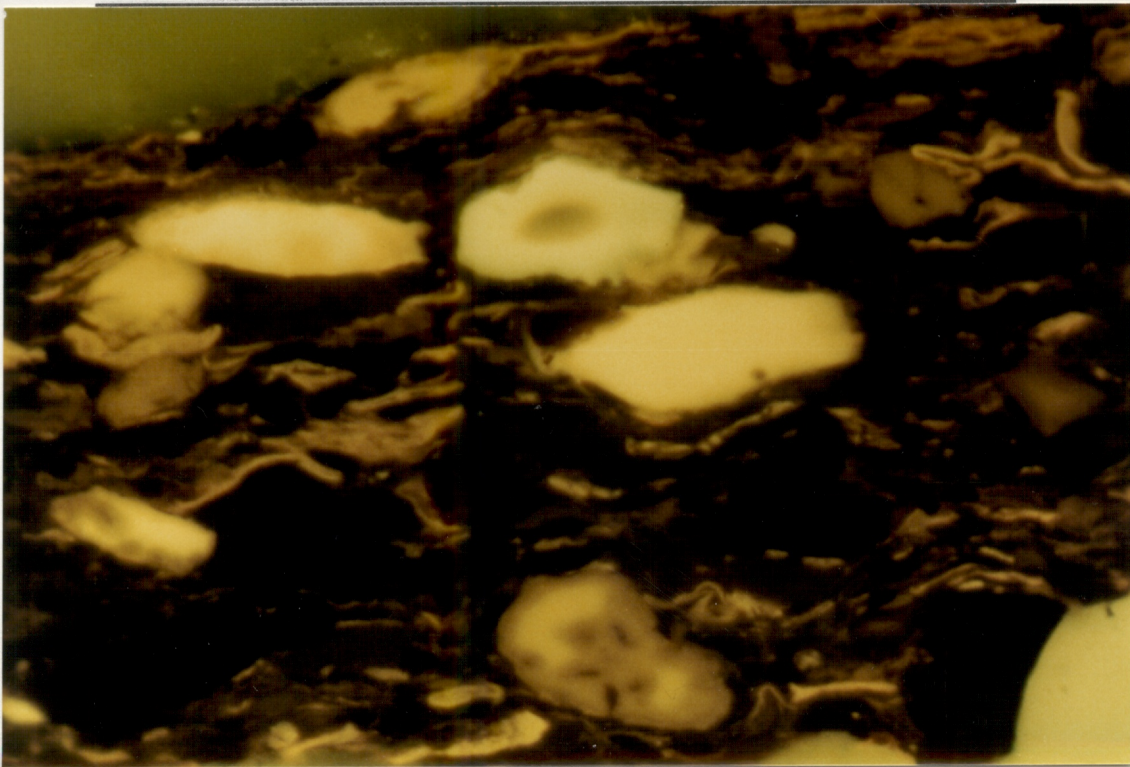


PLATE 4: 2401 metres

Fluorescence Mode

This is the same field as Plate 3 in fluorescence mode illustrating the bright yellow fluorescence of the resinite and sporinite in this coal.

Field Dimensions 0.26 mm x 0.18 mm

DEPT. NAT. RES & ENV



PE906910