



TASMANIA - SOUTH COAST



TO GABO ISLAND INCLUDING TASMANIA

DEPTHS IN FATHOMS
Scale 1:1,000,000 at Lat. 27° 15' S

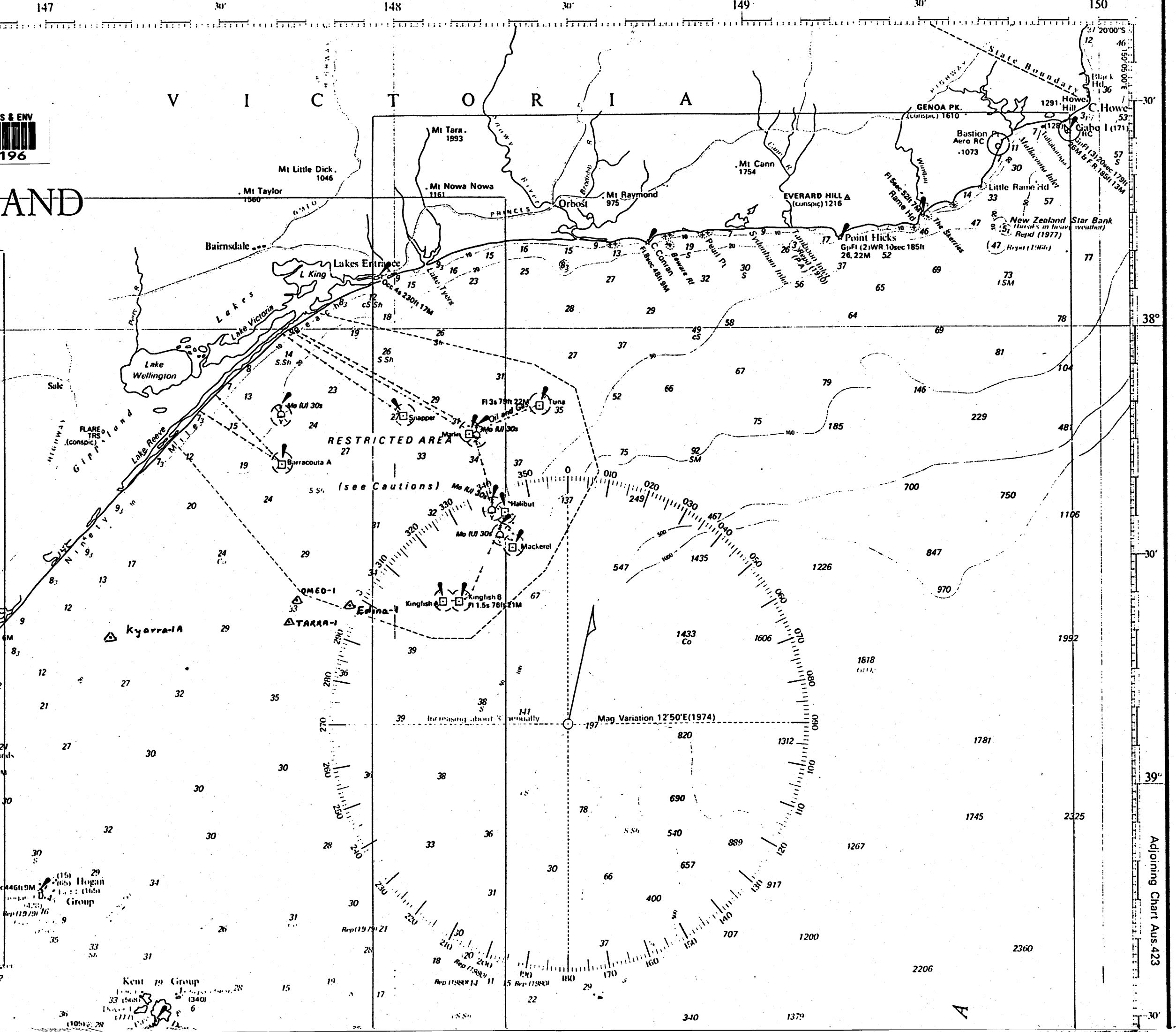
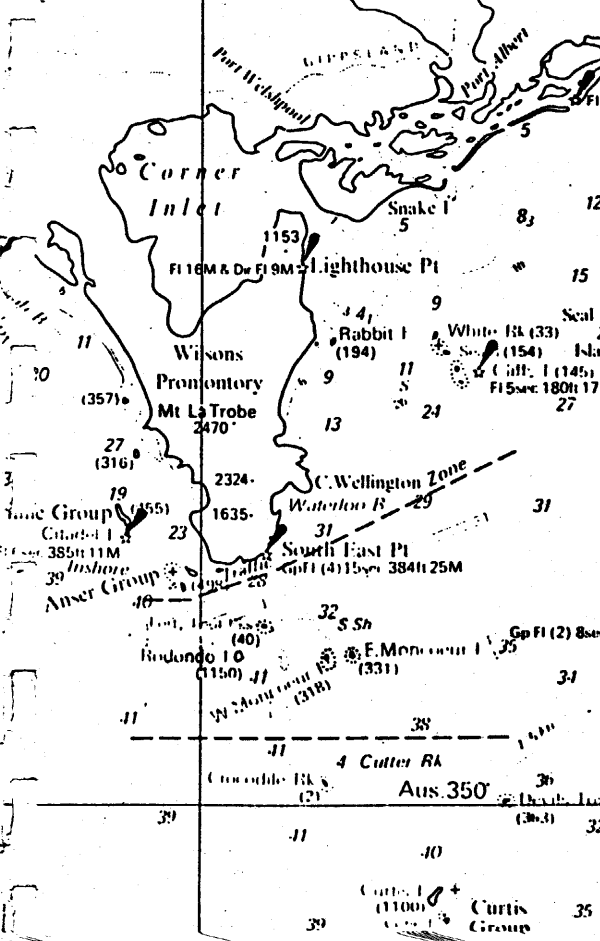
Depths (under eleven in fathoms and feet)
are related to Indian Spring Low Water
unless stated in feet above Mean Higher High Water
Indicator. Positions are related to the Australian
Geodetic Datum surveys to 1970. Admiralty surveys, seismic
and passage soundings to 1970.

WELLS
Temporarily abandoned wells may have
wellhead gear projecting up to about 26 feet (8
metres) from the sea bed.
Submerged production wells are marked by
light-buoys.

CAUTION - OMISSIONS In the areas covered
by larger scale charts these must be consulted
for buoys, lights, beacons and wrecks as on this
chart only the principal aids to navigation are
shown.

CAUTION - OMISSIONS In the areas covered
by larger scale charts these must be consulted
for buoys, lights, beacons and wrecks as on this
chart only the principal aids to navigation are
shown.

CAUTION - OMISSIONS In the areas covered
by larger scale charts these must be consulted
for buoys, lights, beacons and wrecks as on this
chart only the principal aids to navigation are
shown.



Adjoining Chart Aus. 423

A