

# Eagle Bay Resources N.L.

## COMPOSITE WELL LOG

### NORTHRIGHT-1

Scale 1:200

LOCATION : LAT.: 37° 55' 57.75" S  
LONG.: 149° 08' 58.94" E

PERMIT : VIC/P 41

REGION : GIPPSLAND BASIN, OFFSHORE VICTORIA

ELEVATIONS : Sealevel Datum: LAT  
RT-LAT: 25.0m  
ML-LAT.: 105.5m

TOTAL DEPTH : 391mRT

WELL STATUS : PLUGGED AND ABANDONED

RIG : OCEAN BOUNTY

DRILLING CONTRACTOR : DIAMOND OFFSHORE GENERAL COMPANY

WELLSITE GEOLOGIST : TIM BRAY

DATE ON LOCATION : 12:30 Hrs 24 April 2001

WIRELINE LOGGING : SCHLUMBERGER

DRAFTING : Bibra Drafting Service

DATE SPUDDED : 01:30 Hrs 26 April 2001

CEMENTING : HALLIBURTON

DATE AT TOTAL DEPTH : 02:30 Hrs 29 April 2001

MUD LOGGING : BAKER HUGHES INTEQ

DATE RIG RELEASED : 10:15 Hrs 1 May 2001

DRILLING FLUIDS : BAKER HUGHES INTEQ

FEWD LOGGING : SCHLUMBERGER

#### FEWD LOG DATA

LOG SUITE NUMBER	1/1
LOG TYPE/COMBINATION	ARC GR/RES
DATE	28 April 2001
INTERVAL RECORDED	250-391mRT
MUD TYPE	KCL /Polymer
MUD DENSITY G/C3	1.1 SG
CHLORIDES	31,000ppm
MAX CIRC TEMP	28°C

#### LOT / FIT DATA

TYPE	DEPTH	VALUE
LOT	246.8mRT	1.24 SG

#### HOLE SIZE

SIZE (mm)	FROM (mRT)	TO (mRT)
914	130.5	154
311	154	250
216	250	391

#### CASING

SIZE (mm)	WEIGHT (Kg/m)	SHOE DEPTH (mRT)
762/340	462	153.4
244	70	246.8

#### CEMENT PLUGS

FROM (mRT)	TO (mRT)	CEMENT (Class)
223	160	G
337	212	G

#### LITHOLOGY SYMBOLS

##### ROCK TYPE

	SANDSTONE (coarse)		LIMESTONE
	SANDSTONE (fine)		LIMESTONITE (recrystallised)
	SILTSTONE		CALCARENITE
	CLAYSTONE		CALCISILTITE
	CONGLOMERATE		CALCLUTITE
	TILLITE		MARL
	COAL		DOLOMITE

##### OTHER CONSTITUENTS

	ARGILLAGEOUS		CALCAREOUS
	GLAUCINITIC		DOLOMITIC
	FELDSPATHIC		CHERT
	MICACEOUS		FORAMINIFERA
	CARBONACEOUS		SKELETAL FRAGMENTS
	PYRITE		RADIOLARIA
	PLANT REMAINS		SILICEOUS

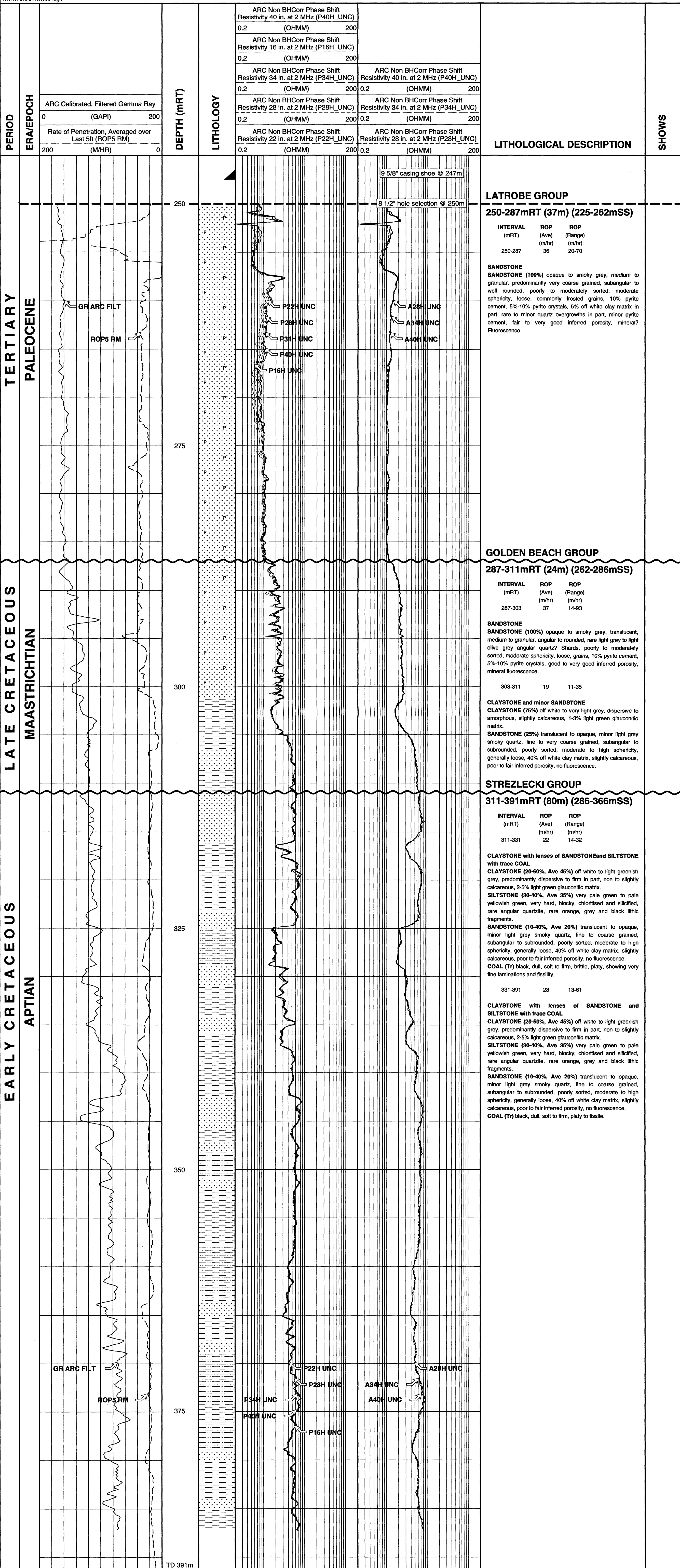
#### ENGINEERING SYMBOLS

	CASING SEAT		RECOVERED CORE No. AND INTERVAL
	PLUGGED INTERVAL		SIDEWALL CORE
	DRILL STEM TEST		SIDEWALL CORE (Not recovered)
	PERFORATED INTERVAL		Repeat Formation Test-RFT (Modular Dynamics Testing Tool MDT)
			RFT/MDT SAMPLE RECOVERED

#### SHOW LEGEND

	MODERATE TO STRONG OIL SHOW
	MODERATE TO STRONG GAS SHOW
	MINOR OIL SHOW
	MINOR GAS SHOW

NORTHRIGHTCOMP.dgn



**LATROBE GROUP**  
**250-287mRT (37m) (225-262mSS)**

INTERVAL (mRT)	ROP (Ave) (m/hr)	ROP (Range) (m/hr)
250-287	36	20-70

**SANDSTONE (100%)** opaque to smoky grey, medium to granular, predominantly very coarse grained, subangular to well rounded, poorly to moderately sorted, moderate sphericity, loose, commonly frosted grains, 10% pyrite cement, 5%-10% pyrite crystals, 5% off white clay matrix in part, rare to minor quartz overgrowths in part, minor pyrite cement, fair to very good inferred porosity, mineral? fluorescence.

**GOLDEN BEACH GROUP**  
**287-311mRT (24m) (262-286mSS)**

INTERVAL (mRT)	ROP (Ave) (m/hr)	ROP (Range) (m/hr)
287-303	37	14-93

**SANDSTONE (100%)** opaque to smoky grey, translucent, medium to granular, angular to rounded, rare light grey to light olive grey angular quartz? Shards, poorly to moderately sorted, moderate sphericity, loose, grains, 10% pyrite cement, 5%-10% pyrite crystals, good to very good inferred porosity, mineral fluorescence.

**STREZLECKI GROUP**  
**311-391mRT (80m) (286-366mSS)**

INTERVAL (mRT)	ROP (Ave) (m/hr)	ROP (Range) (m/hr)
311-331	22	14-32

**CLAYSTONE with lenses of SANDSTONE and SILTSTONE with trace COAL**  
**CLAYSTONE (20-60%, Ave 45%)** off white to light greenish grey, predominantly dispersive to firm in part, non to slightly calcareous, 2-5% light green glauconitic matrix.  
**SILTSTONE (30-40%, Ave 35%)** very pale green to pale yellowish green, very hard, blocky, chloritised and silicified, rare angular quartzite, rare orange, grey and black lithic fragments.  
**SANDSTONE (10-40%, Ave 20%)** translucent to opaque, minor light grey smoky quartz, fine to coarse grained, subangular to subrounded, poorly sorted, moderate to high sphericity, generally loose, 40% off white clay matrix, slightly calcareous, poor to fair inferred porosity, no fluorescence.  
**COAL (Tr)** black, dull, soft to firm, brittle, platy, showing very fine laminations and fissility.

**CLAYSTONE with lenses of SANDSTONE and SILTSTONE with trace COAL**  
**CLAYSTONE (20-60%, Ave 45%)** off white to light greenish grey, predominantly dispersive to firm in part, non to slightly calcareous, 2-5% light green glauconitic matrix.  
**SILTSTONE (30-40%, Ave 35%)** very pale green to pale yellowish green, very hard, blocky, chloritised and silicified, rare angular quartzite, rare orange, grey and black lithic fragments.  
**SANDSTONE (10-40%, Ave 20%)** translucent to opaque, minor light grey smoky quartz, fine to coarse grained, subangular to subrounded, poorly sorted, moderate to high sphericity, generally loose, 40% off white clay matrix, slightly calcareous, poor to fair inferred porosity, no fluorescence.  
**COAL (Tr)** black, dull, soft to firm, platy to fissile.