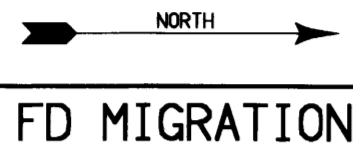


ENCLOSURE 5A



CROSS LINE CDP 575 LINES 100-270

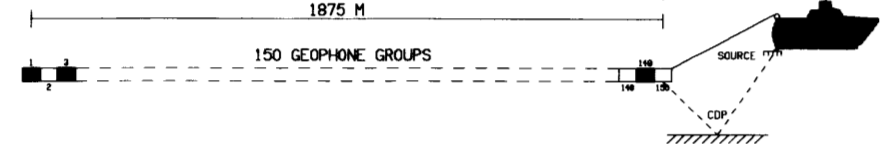
ESSO AUSTRALIA LTD. WHIPTAIL 3D SURVEY



FIELD DATA

DATA SHOT BY - G.S.I. PARTY 2993 M.V. MAGNIFICENT CREEK
 DATE SHOT - JUNE 1988
 RECORDING INSTRUMENTS - TITAN 1000
 RECORDING FILTERS - HIGH-CUT FILTER AND SLOPE 180 HZ # 72 DB/OCTAVE
 LOW-CUT FILTER AND SLOPE 8 HZ # 18 DB/OCTAVE
 RECORDING POLARITY - A POSITIVE PRESSURE AT THE HYDROPHONE
 PRODUCES A NEGATIVE NUMBER ON TAPE
 DIGITAL TAPE FORMAT - SEC 0 6250 BPI
 RECORD LENGTH / SAMPLE RATE - 3 0 SECONDS AT 2 MILLISECOND SAMPLE RATE
 ENERGY SOURCE - 2180 CU IN. V5X SLEEVE AIRGUN ARRAY
 OPERATING AT 1850 PSI
 GUN DELAY - 51 2 MILLISECONDS
 SOURCE DEPTH - 5 METRES AVERAGE
 SOURCE TO ANTENNA DISTANCE - 116 78 METRES
 SHOTPOINT INTERVAL - 25 00 METRES
 STREAMER LENGTH - 1950 METRES 150 GROUPS 12 50 M GROUP INTERVAL
 STREAMER TYPE - DIGITAL FIBRE OPTIC
 STREAMER DEPTH - 6 METRES AVERAGE
 COVERAGE - 75 FOLD 150 TRACE
 PRIMARY NAVIGATION SYSTEM - SYLEDIS (427 MHZ)
 BACKUP NAVIGATION SYSTEM - TRANSIT SATELLITE

SPREAD DIAGRAM



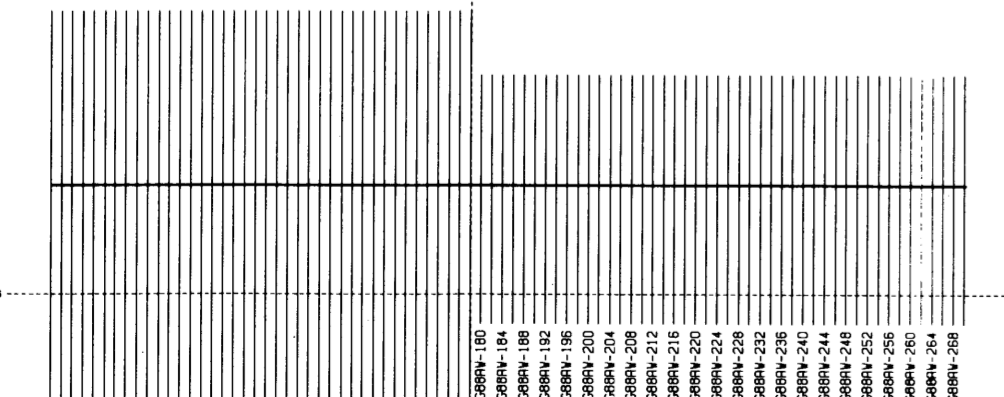
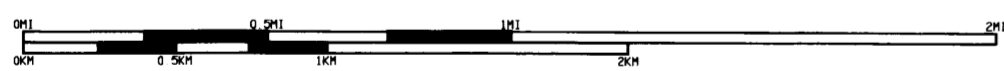
DIGITAL PROCESSING

POLARITY CONVENTION - THE POLARITY OF THE FIELD RECORDING WAS MAINTAINED THROUGHOUT THE PROCESSING AND DISPLAY
 PROCESSING RECORD LENGTH - 3 0 SECONDS
 RESAMPLE - MINIMUM PHASE RESAMPLE FROM 2 TO 4 MSEC
 STATIC CORRECTIONS - AIRGUN DELAY - 91 2 MSEC
 AMPLITUDE RECOVERY (TAR) - 5 0 DB PER S FROM 0 TO 3 0 S
 SPHERICAL DIVERGENCE CORRECTIONS APPLIED
 PRE DECONVOLUTION MUTE - RAMP LENGTH 100 MS
 OFFSETS (CM) : 244 300 2007
 START TIMES (MS) : -150 220 1509
 VELOCITY FILTERING (V6) - APPLIED IN SHOT RECORD DOMAIN WITH FULL COSINE RAMP 7 5 / 3 0 MS/TRACE
 DESIGNATURE (V6) - STANDARD WAVELETS, FRAX-125 HZ
 SMASH - 2:1 ADJACENT TRACE SMASH
 VELOCITY ANALYSIS - USING 11 DEPTH POINT VELSCAN ANALYSIS LOCATED EVERY 500 M
 DEMULTIPLE (15 PERCENT) - HORIZONTAL CUT-OFF VELOCITY IN NEGATIVE F-K QUADRANT 8000 M/S
 VELOCITY ANALYSIS - USING 11 DEPTH POINT VELSCAN ANALYSIS LOCATED EVERY 500 M
 NORMAL MOVEOUT CORRECTION - VELOCITIES AS ANNOTATED
 SSD CORRECTIONS - SHOT & STREAMER STATIC CORRECTIONS
 TIME VARIANT SCALING - 1500 MS GATES
 INSIDE-TRACE MUTING - RAMP LENGTH - 96 MS
 OFFSETS (CM) : 144 523 525
 START TIMES (MS) : 700 1600 3000
 RAMP LENGTH - 96 MS
 FIRST BREAK SUPPRESSION - OFFSETS (CM) : 244 300 2007
 START TIMES (MS) : -150 220 1509
 COMMON DEPTH POINT STACK - 30 BINNED STACK
 LOCATION CORRECTIONS - TO GEOMETRIC BIN CENTRE
 INTERPOLATION - 1 2 CROSSLINE INTERPOLATION (CDP MODE)
 MIGRATION - FINITE DIFFERENCE MIGRATION (2 PASS)
 TRANSMISSION COMPENSATION - 45 DEGREE ALGORITHM 36 MS TIMESTEP
 TIME VARIANT FILTERING - TCOMP TAUMIN/MAX = 20/120
 FREQUENCY (HZ) (5 11 95 105) TIME (MS) 1500
 (5 11 55 65) 3000
 TIME VARIANT SCALING - 200 MS GATE LOGARITHMIC SCALING

DISPLAY

HORIZONTAL SCALE - 125 000 M / CM
 VERTICAL SCALE - 20 000 CM / SEC
 POLARITY - NORMAL
 TRACE TYPE, BIAS - 5 PERCENT
 DATUM - SEA LEVEL
 DISPLAY UNIT - 0 967618 CM

DISPLAY GAIN	
AVG	MSFC
INPUT CDP	CA 110
99 9	77 7



09 JAN 1989

PARTY 6860

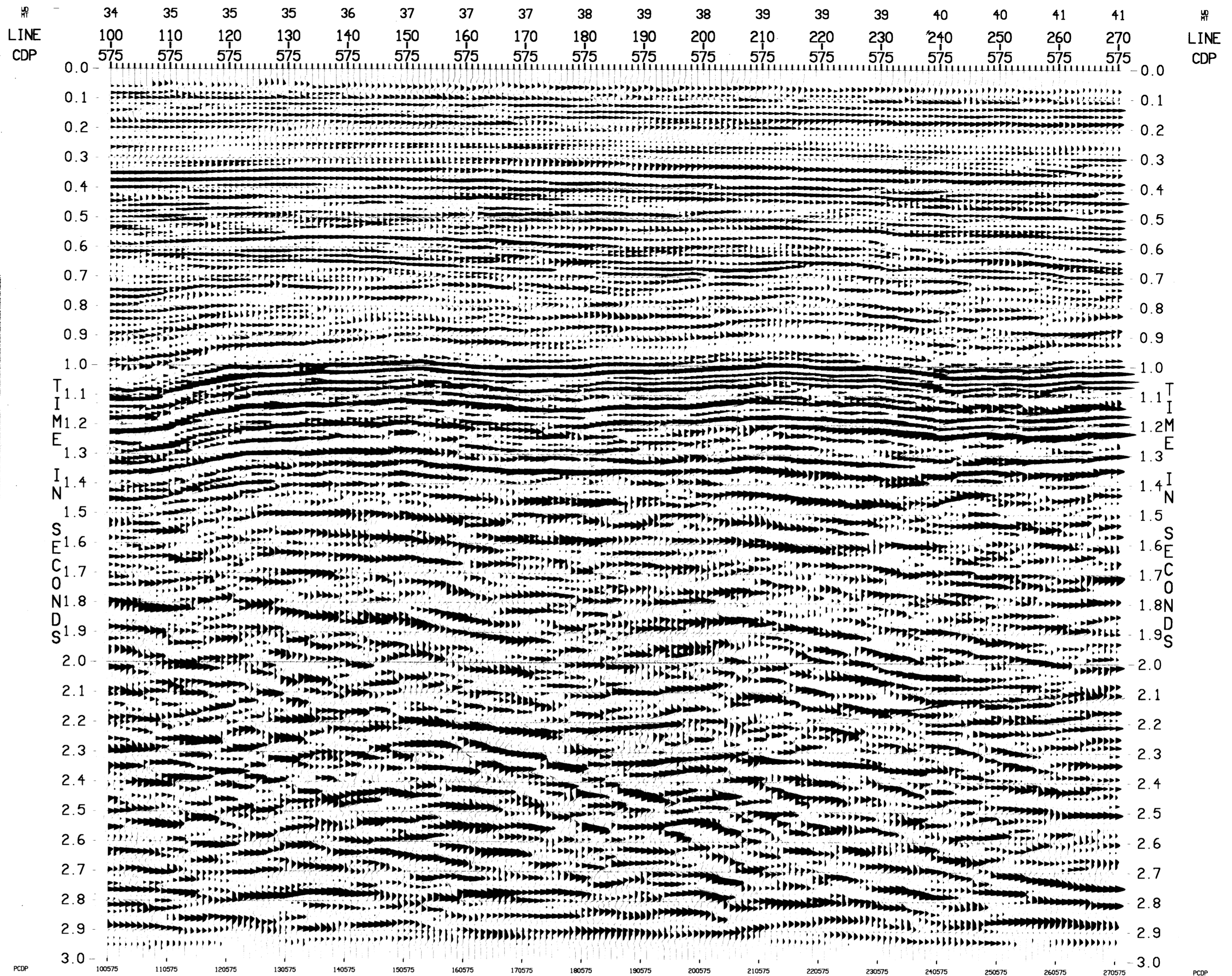


GEOPHYSICAL SERVICE INC

(A HALLIBURTON COMPANY)



PROCESSING CHECKED BY -



FD MIGRATION

CROSS LINE CDP 575
LINES 100-270

ESSO AUSTRALIA LTD.
WHIPTAIL 3D SURVEY

FD MIGRATION

CROSS LINE CDP 575
LINES 100-270

ESSO AUSTRALIA LTD.
WHIPTAIL 3D SURVEY