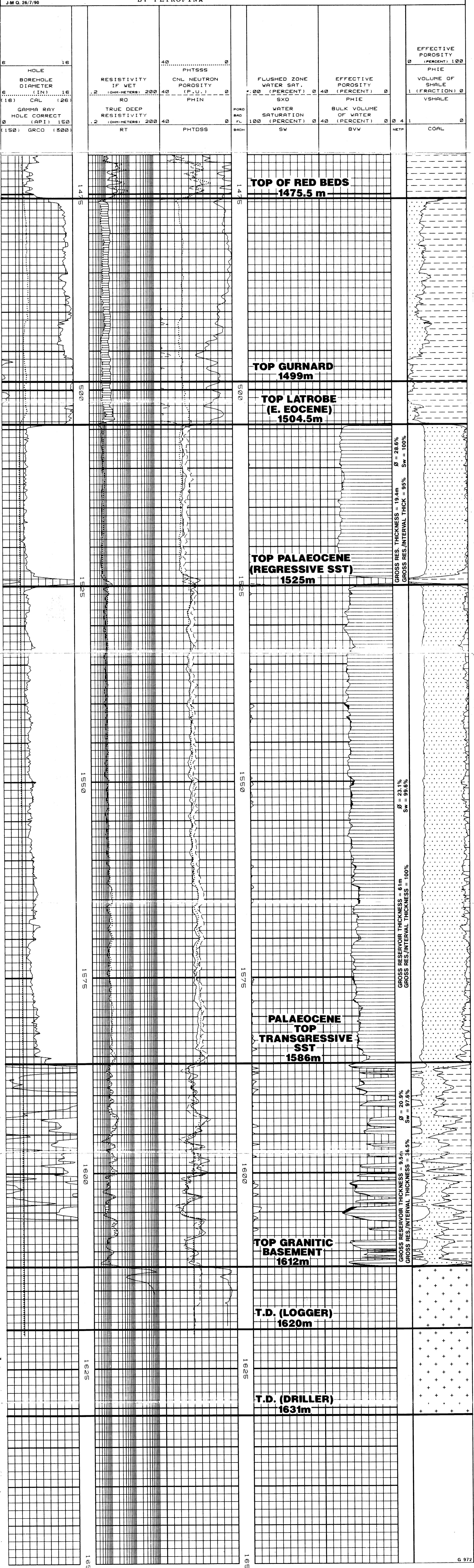




# MUDSKIPPER-1

LOGCALC2 OUTPUT 1:200  
SHALY SAND INTERPRETATION  
BY PETROFINA

**GROSS RESERVOIR:**  
**PHIE > 6%**  
**VSHALE < 40%**



GROSS RES. THICKNESS = 19.4m  
GROSS RES./INTERVAL THICK = 95% Sw = 100%  
 $\phi = 28.6\%$

GROSS RES. THICKNESS = 61m  
GROSS RES./INTERVAL THICKNESS = 100%  
 $\phi = 23.1\%$   
Sw = 99.6%

GROSS RES. THICKNESS = 9.5m  
GROSS RES./INTERVAL THICKNESS = 36.5%  
 $\phi = 20.9\%$   
Sw = 97.6%