

MOONFISH\_1\_ST1

KB = 23.0m



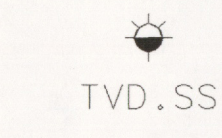
MOONFISH\_1

KB = 23.0m

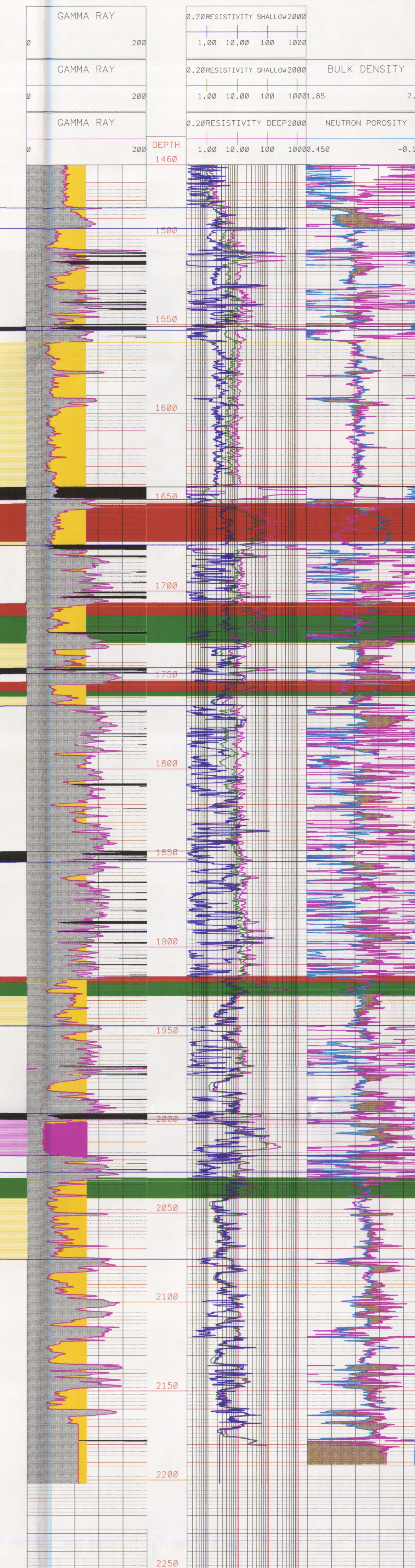
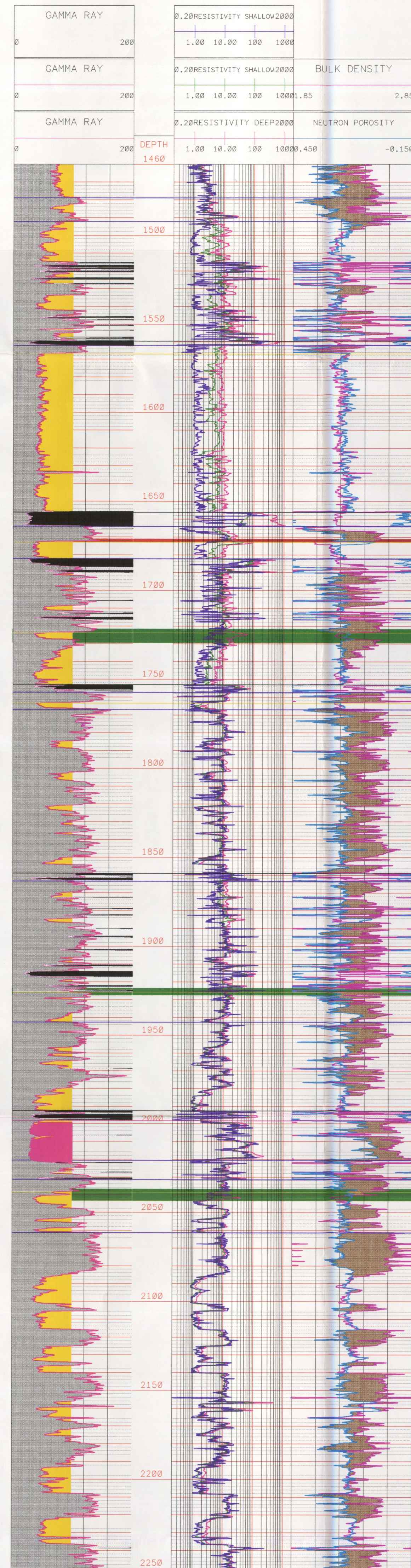
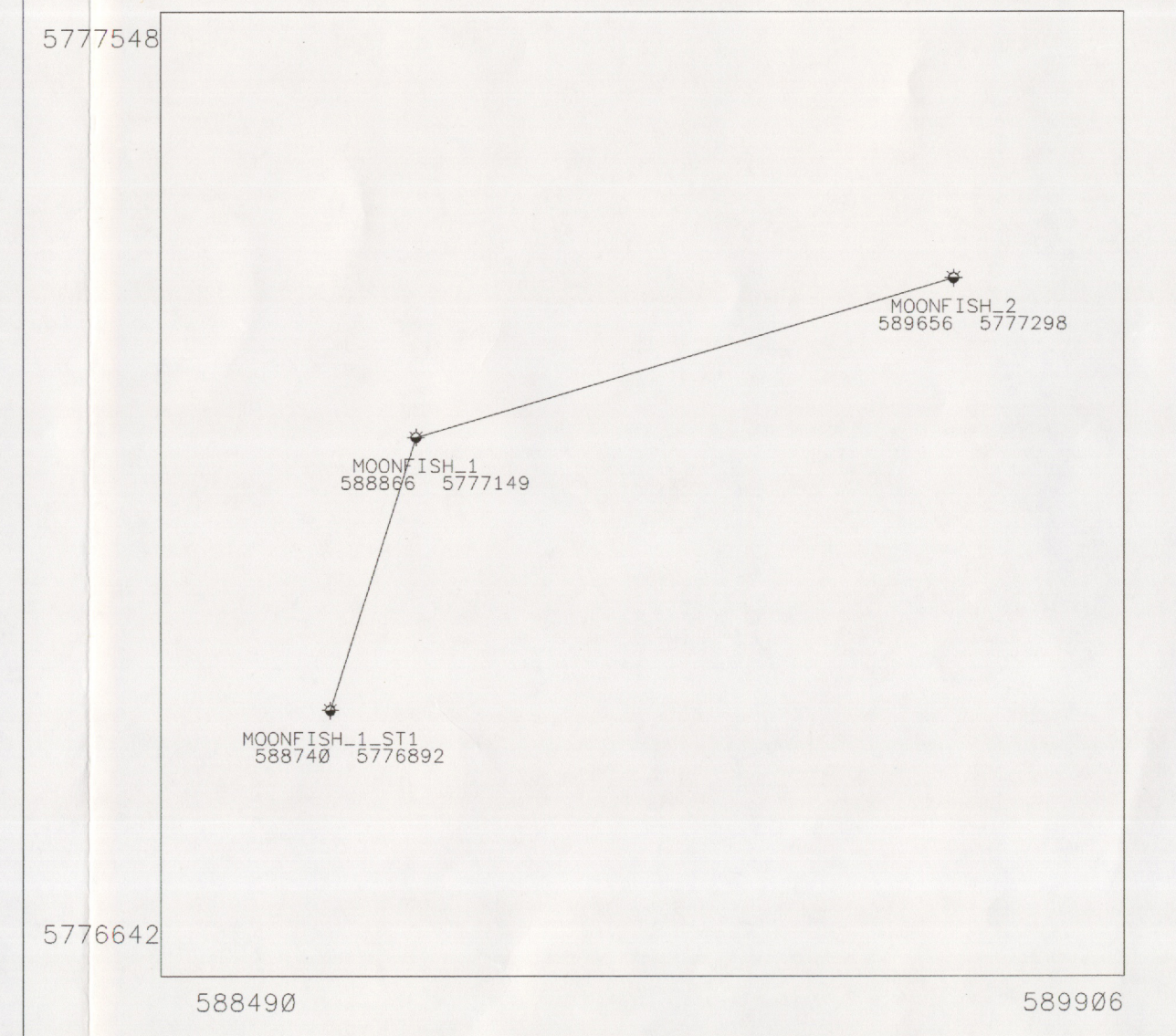


MOONFISH\_2

KB = 30.8m



LOCALITY MAP



LEGEND

- SHOW OR STAIN
- HYDROCARBON CUT
- FLOUDESCENCE
- GAS SHOW
- OIL PRODUCTION
- GAS PRODUCTION
- DST WITH OIL RECOVERED
- INTERPRETED OIL PROD.
- INTERPRETED GAS PROD.
- INTERPRETED WATER BEARING
- WATER PRODUCTION
- CONDENSATE PRODUCTION
- INTERPRETED COND. PROD.
- DST WITH GAS RECOVERED
- CORE WITH CORE PERFORATION ANALYSIS
- LOG ANALYSIS
- LOG ANALYSIS WITH NET PAY
- DST
- BIT RUN
- PLUG
- SWC WITH RECOVERY
- SWC WITHOUT RECOVERY
- FIT
- RFT PRETEST
- RFT SAMPLE
- CASING
- MUD
- PACKER
- BRIDGE PLUG
- LITHOLOGIC SYMBOLS
- Claystone
- Anhydrite
- Mudstone
- Silt
- Sand
- Basement
- Limestone
- Micr. Limestone
- Gran. Limestone
- Skel. Limestone
- Mari
- Volcanics
- Dolomite
- Granule
- Dolites
- Dolomitic
- Lithic or rock fragments
- Pyrite
- Chert
- Coal
- Carbonaceous Matter
- Glaucanite
- Corals
- Bryozoans
- Mica
- Brachiopods
- Gastropods
- Cephalopods
- Relecyopods
- Echinoids
- Fish remains
- Calcareous
- Plant remains
- Spores
- Leaves
- Foram
- Fossils

Esso AUSTRALIA LIMITED

MOONFISH FIELD

STRUCTURAL CROSS SECTION (mTVD.55)

VERTICAL SCALE 1:1500 HORIZONTAL SCALE 1:2000

AUTHOR : mefitto DRAFTED BY : mbglibe DATE : 7 SEP 1995 PROGRAM : SOLAR/SCOPE RELEASE : SOLAR SR5.0

ZPL\_moonfish\_11090315121451 p.jmi 11

ZPL\_moonfish\_11090315121451 p.jmi 11