

BASS STRAIT OIL COMPANY

WELL NAME: MOBY-1
ZERO OFFSET VSP SURVEY

ENCLOSURE 3

VELOCITY CURVES & TIME-DEPTH CURVE

SHOT BY BAKER ATLAS 13 OCTOBER, 2004
PROCESSED BY VSFUSION OCTOBER, 2004
PROJECT CODE BSOC01

ACQUISITION INFORMATION

-CABLE-

DRILL FLOOR (DF) ELEVATION 22 M ABOVE MSL
WATER DEPTH (DW) 53.9 M BELOW MSL
MINIMUM DEPTH (DF) 90 M
MAXIMUM DEPTH (DF) 650 M

-SOURCE-

ENERGY SOURCE SLEEVE GUN
NUMBER OF GUN 4
TOTAL GUN VOLUME 600 CU. IN
GUN DEPTH 5 M BELOW MSL
SOURCE DISTANCE FROM WELLHEAD 46.3 M
SOURCE AZIMUTH FROM WELLHEAD 193.7 DEG. N

-INSTRUMENTS-

RECORDING SYSTEM DSS 16CH A/D
SAMPLING INTERVAL 1 MS
RECORD LENGTH 4 SECONDS
DOWNHOLE RECEIVER TYPE AWS 1300 GM
ELECTRIC LOGGING COMPANY BAKER ATLAS

PROCESSING SEQUENCE

1. CONVERT FROM SEG-Y FORMAT TO SEISLINK-X FORMAT
2. EDIT/SUM/PICK ARRIVALS (BREAK TO BREAK)
3. GEOMETRY SURVEY APPLIED
4. VELOCITY ANALYSIS

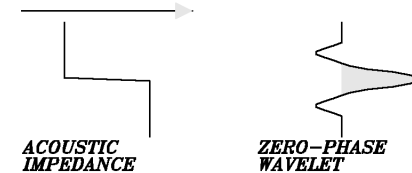
COMMENTS

ZERO POINT MEASUREMENT AT DRILL FLOOR (DF)
SEISMIC REFERENCE DATUM IS MEAN SEA LEVEL (MSL)
WATER VELOCITY = 1500 M/SEC.
DEPTH SCALE IS 50 M/INCH.

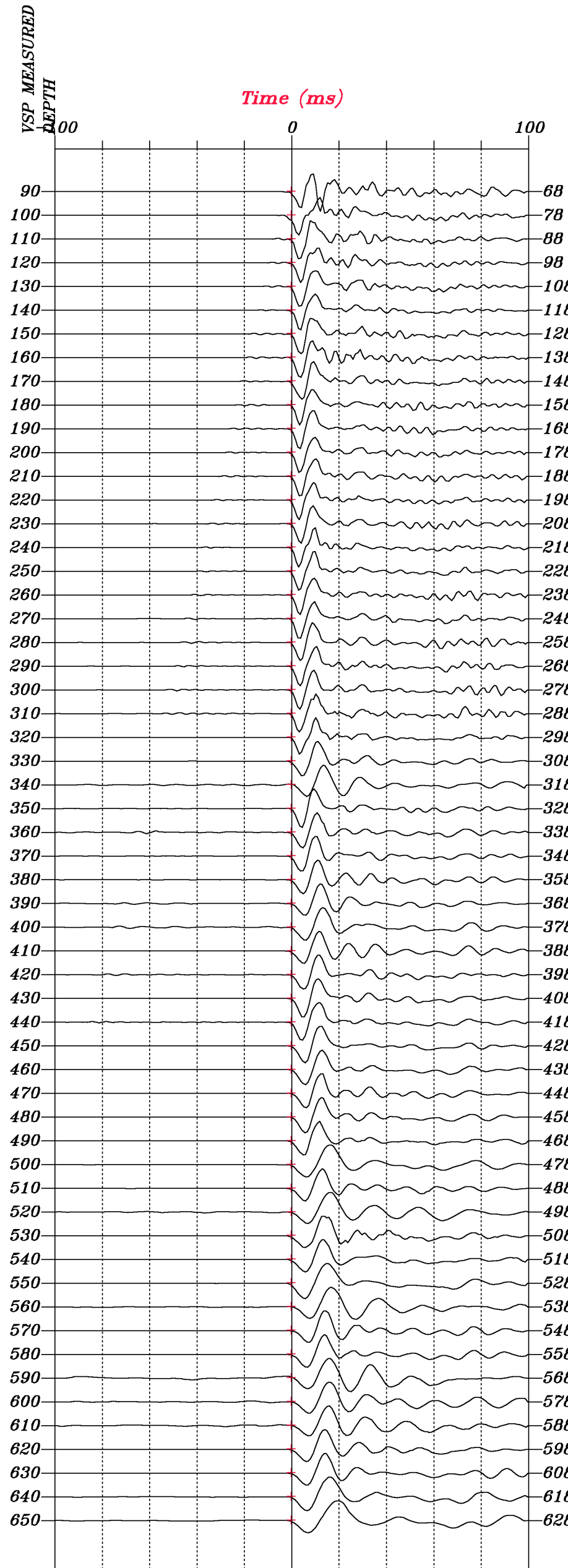
DISPLAY CONVENTION

NORMAL POLARITY

AN INCREASE IN ACOUSTIC IMPEDANCE
IS DISPLAYED AS A PEAK



CHECKSHOT DATA ALIGNED

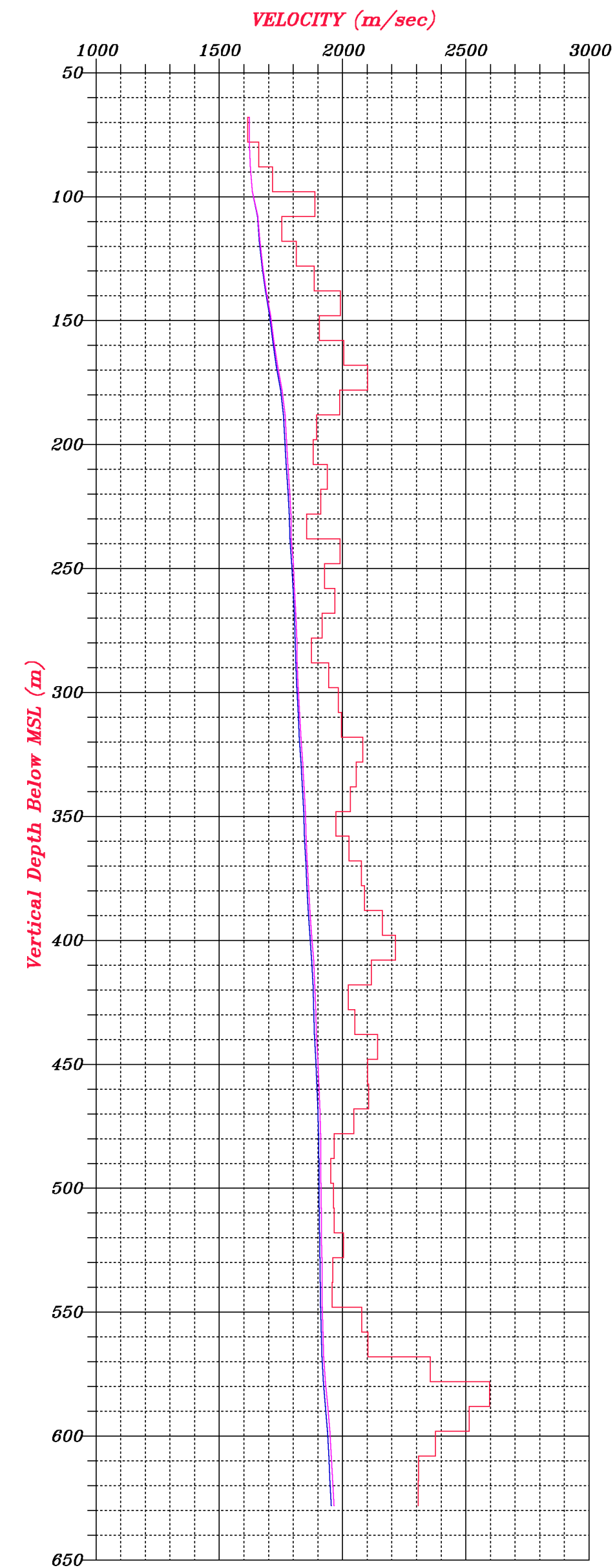


VELOCITY CURVES

RMS velocity

Average velocity

Interval velocity



TIME-DEPTH CURVE

