



GEOPHYSICAL SERVICE INTERNATIONAL
CENTRAL PROCESSING CENTRE



AUSTRALIA LIMITED

514
496
G71B
413

GIPPSLAND BASIN
AIR Gun
1300
23
48

4
2
3
4
5
6
7

4
24
0
4000

4
4
4
4
4
4
4

48
2200
300
4500

4
4
4
4
4
4
4

18
Odd/Even
TVD
TVD
35

4
4
4
4
4
4
4

48
2200
300
4500

4
4
4
4
4
4
4

48
2200
300
4500

4
4
4
4
4
4
4

48
2200
300
4500

4
4
4
4
4
4
4

Nov 1971

909

GSI

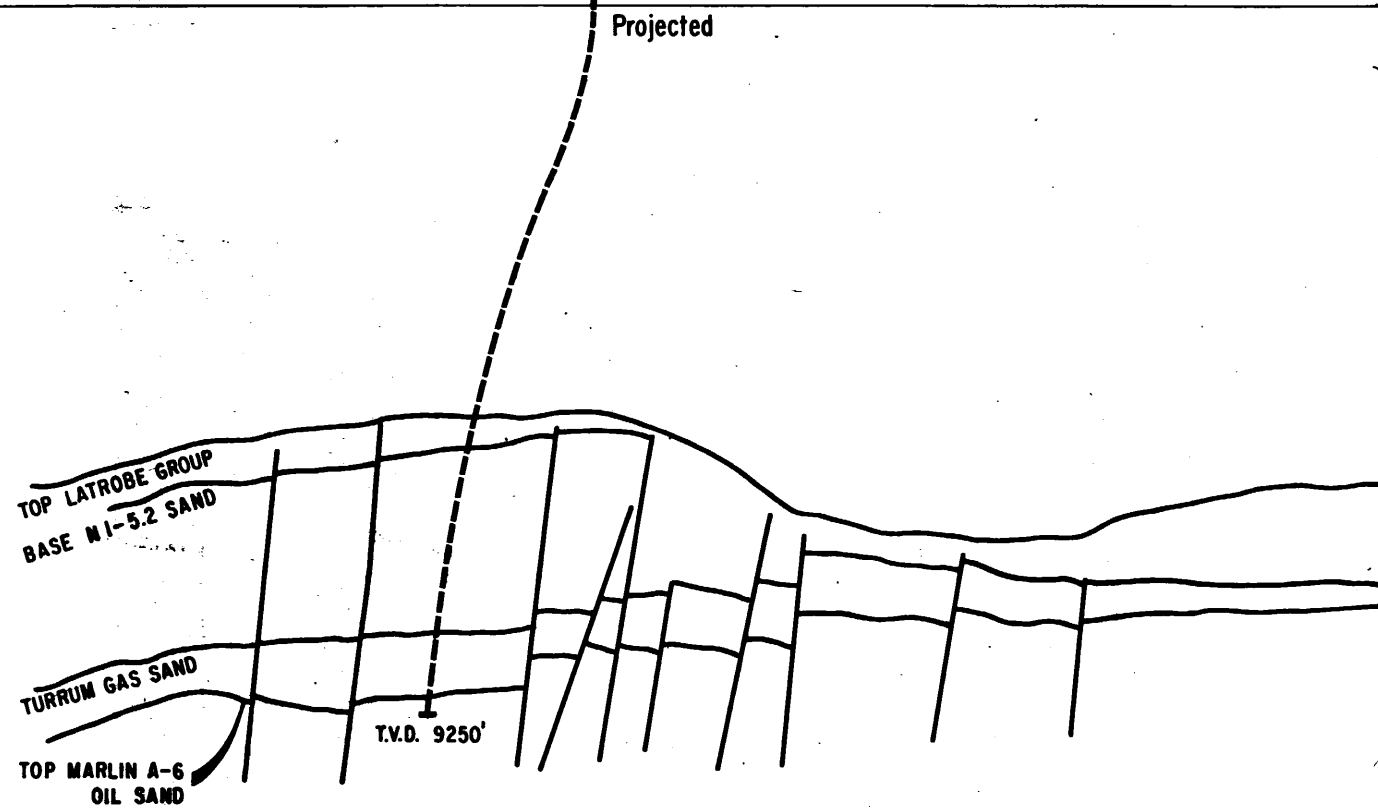
6469

Jan. 1972

275

514
LINE 671B - 514

□
(Proposed A-24)

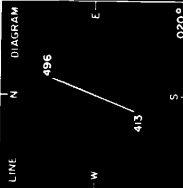
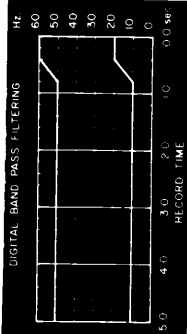




GEOPHYSICAL SERVICE INTERNATIONAL
DIGITAL PROCESSING CENTRE
SYDNEY, NSW, AUSTRALIA



AUSTRALIA LIMITED



PROCESSING DATA
Groups processed 1 - 48
Vertical stack Odd / Even
Design before stack TVD 48 pits, 4 ms No. of gates/trace 2
Design gate (trace) 2200 to 5000 ms Gate shift -80 ms/trace
Design after stack TVD 64 pits, 4 ms No. of gates/trace 2
Design gate (trace) 300 to 4500 ms Gate shift 0 ms/trace
Digital filter 35 pits, 4 ms
Displayed digital AGC Playback gain 7 db
Polarity displayed Positive Negative
TIAC REQUEST 275 field tape 6469
INPUT CREW PARTY 107-ES0-2 Date Jan. 1972

VES 1
NMO 4
AR2 2
TVD 3
DCN 5
UPS 6
TVD 7
DCN 7
UGF 7
TVF 7
700 8x4

AREA GIPPSLAND BASIN
RECORDING PARAMETERs LINE G7IB-514
Source Air Gun SP 413 to 496
Array size 300 Gun 23 Gun tuned array
4 pops/Sp Shot off group 48 No. of groups
Cable length (centre of gp 1 to centre of gp 48) 7708 ft
Offset (array centre to centre of group 48) 958 ft
Group interval 164 ft SP interval 656 ft
30 geophones/group Field polarity first break Negative
Recording system DFS III Filter 8 to 62 Hz
Recording length 50 sec Sample rate 4 ms

G.S.I. Field crew 909 Date Nov. 1971

LINE **G7IB-514**

SCALE RATIO = 2 BI/AT 1:5 SEC

G7IB-502 EX67-106
ET 66-66 G63-II

G7IB-503
EX67-103

EG64-38 EM68 227 M 44x, E564-47

EX67-104 G7IB-504 G7IB-505
G69A-246 G7IB-504 G7IB-505

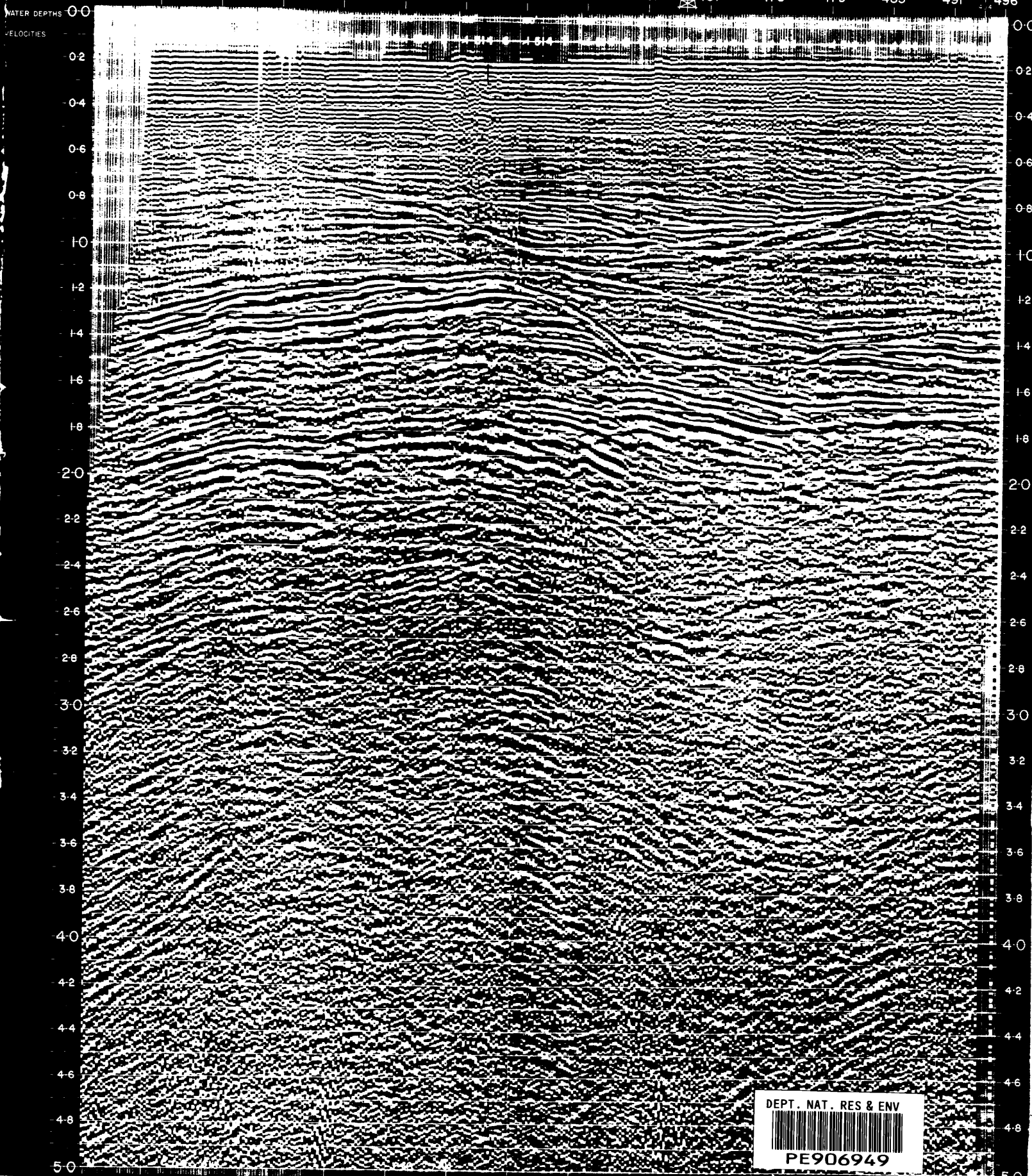
EX67-05 TURREM-1 TC10029
G69A-245 G7IA-463

ET66-62 G7IB-508A
G7IB-508 G63-21

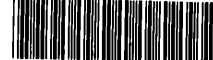
G7IB-50
G7IB-509

BEFORE STACK
2x FOLD STACK / TVD
TVF 20 - 50 Hz 400ms
15 - 55 Hz 600ms
10 - 50 Hz 800ms
EG64-23

G7IB-511



DEPT. NAT. RES & ENV



PE906949



GEOPHYSICAL SERVICE INTERNATIONAL
DIGITAL PROCESSING CENTRE
STONEY NSW, AUSTR

AUSTRALIA LIMITED

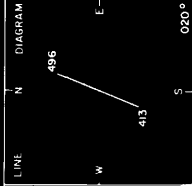
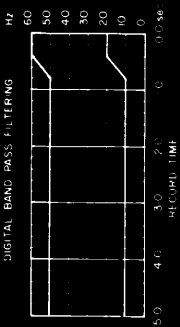


AREA A, GIPPSLAND BASIN
RECORDING INSTRUMENTS LINE G7IB-514
SP 413 to 496

Source Air Gun
Array size 1300 ft, 23 sps, linear array
4 pops/SP. Shot off group 48. ic of groups 48
Cable length (centre of sp 1 to centre of sp 48) 7708 ft
Offset array, centre to centre of group 48 = 958 ft
Group interval 164 ft SP interval 656 ft
30 geophones/group Field polarity first break Negative
Recording system DFS III Time 8 to 62 Hz
Recording length 50 sec Sample rate 4 ms

VES 1 4
MAG 2 3
AMP 2 3
TVD 2 3
DCN 2 3
UPS 5 6
T/D 6
D/JI 7
D/GF 7
T/VF 7
700-5-4

PROCESSED DATA
Groups processed 1-48 Sample period 4 ms
TAR B = 18 4 30-sec Processed 24 fold
Vertical stack Odd/Even Gate 0 to 4000 ms
Decom before stack TVD 48 pts, 4 ms No of gates/trace 2
Design gate (trace 1) 2200 to 5000 ms Gate shift -80 ms/trace
Decom after stack TVD 64 pts, 4 ms No of gates/trace 2
Design gate (trace 1) 300 to 4500 ms Gate shift 0 ms/trace
Digital filter 35 pts, 4 ms
Displayed digital AGC playback gain 7 dB
Polarity displayed Positive Negative
T/C REQUEST 275 road type 6469
NPJT CREW PARTY 107-ES0-2 Date Jan, 1972



LINE G7IB-514

SCALE RATIO = 2 BI/AT 1.5 SEC

G7E-102, EX 31, 06 G7IB-503
ET 66-66 G63-11 EX 67-103

EG64-38, EM68-227 M-44BX, EG64-47

EX 67-04

EX 67-105 TURRUM-1, TD 10029

ET 66-62 G7IB-508A

G7IB-510

G664-23

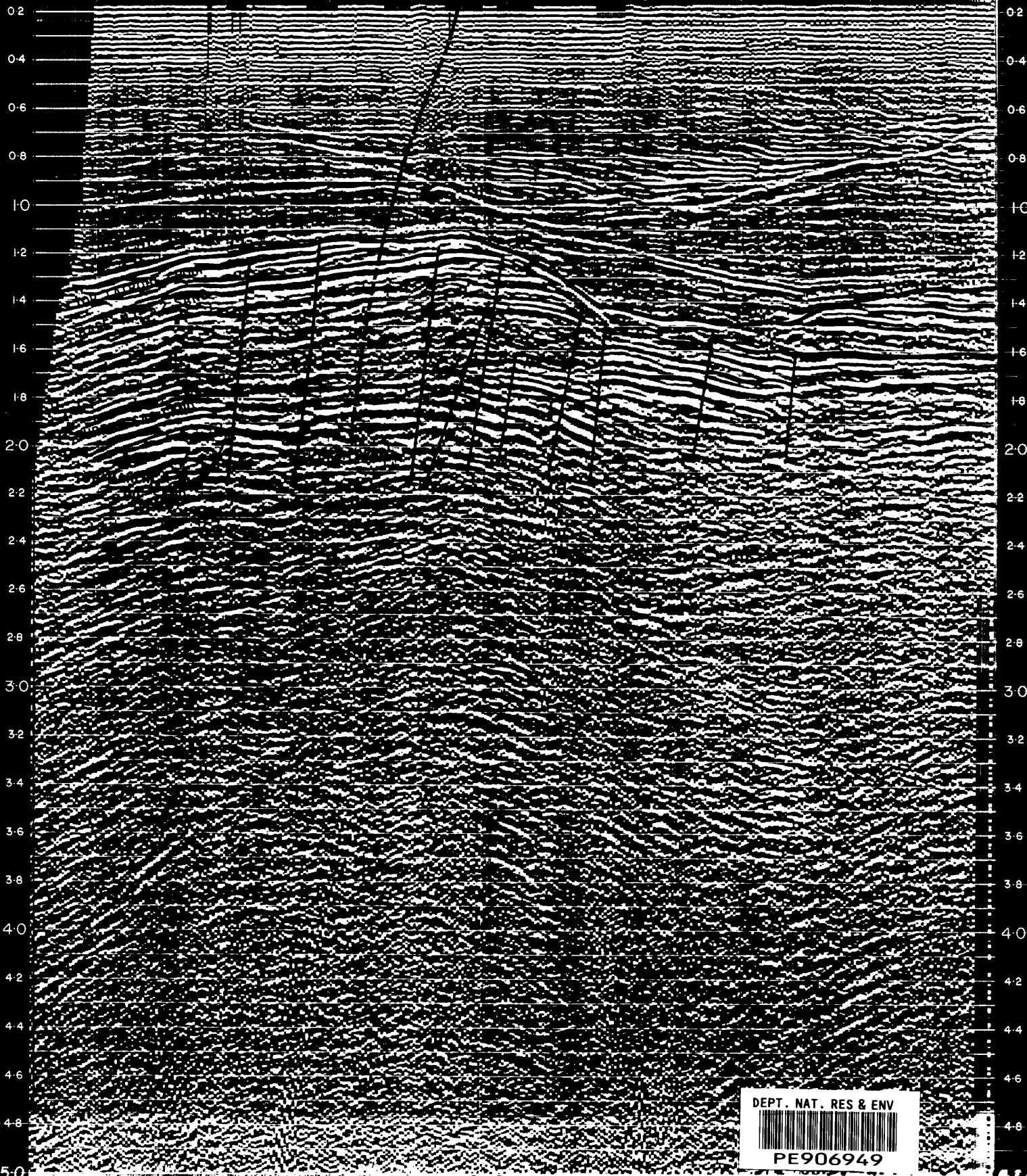
G7IB-511

NE

TVD BEFORE STACK
24 FOLD STACK / TVD
TVF 20-60 Hz 400ms
15-55 Hz 800ms
10-30 Hz 800ms

WATER DEPTHS 0 0

VELOCITIES 0.2 0.2



DEPT. NAT. RES & ENV



PE906949