



**EXPLORATION LOGGING**

**DRILLING RATE AND DATA**

FT/HR  
 MIN/FT  
 VISUAL POROSITY  
 CORE TEST  
 GD. FAIR  
 TR. X  
 FAIR XX  
 GD. XXX

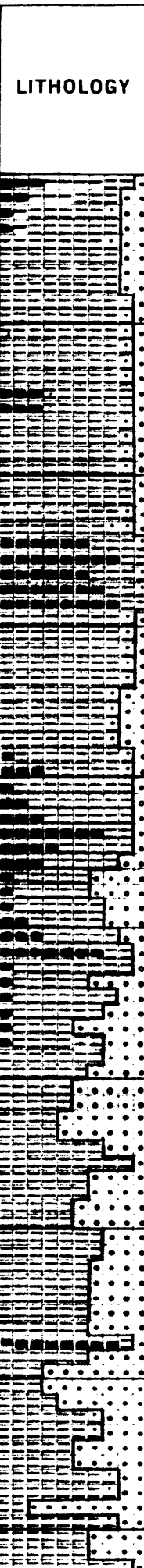
100 75 50 25  
 NB#12 HTC XDG  
 323 FT/10 HRS

2/6 MICHELMORE

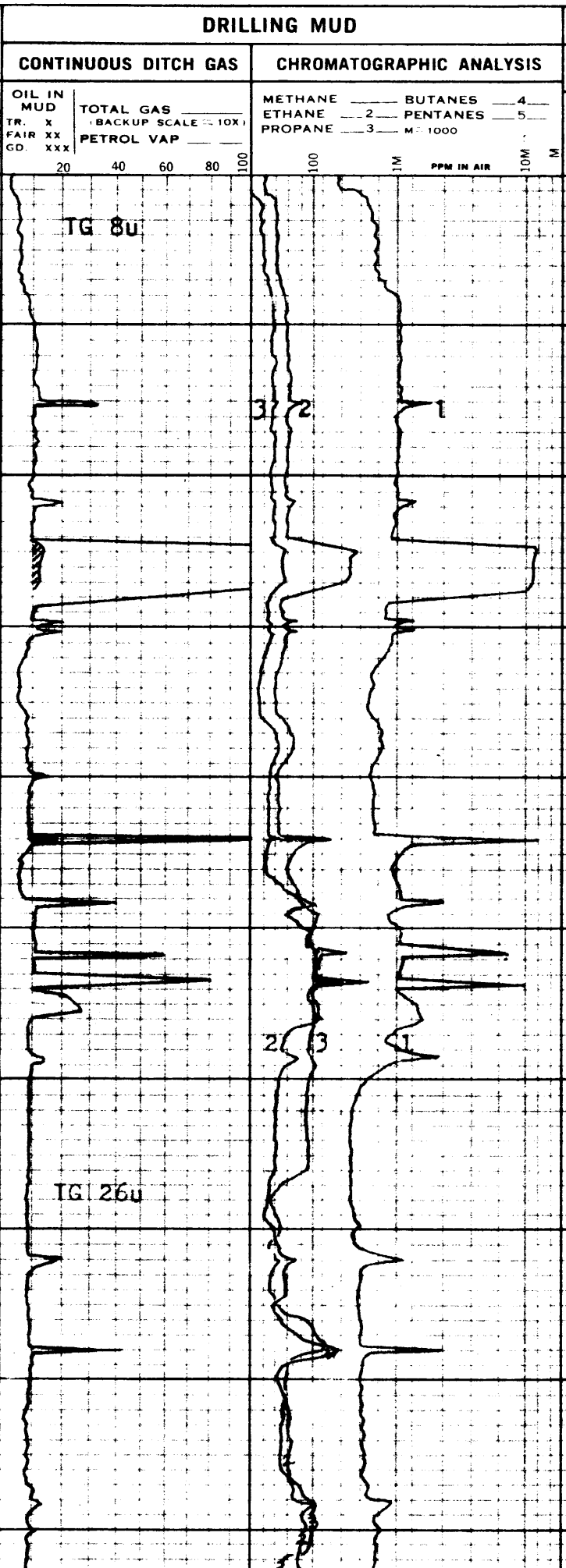
NB#13 HTC XDG  
 322 FT/12 1/4 HRS

ASHTON

DEPTH  
7400  
7500  
7600  
7700  
7800



OIL  
TRACE  
GD. TRACE  
FAIR  
GOOD  
V. GOOD



**CUTTINGS**

CUT  
FAIR  
GOOD

**GAS**

TOTAL GAS (BACKUP SCALE 10X)  
PETROL VAP

**REMARKS AND LITHOLOGY DESCRIPTION**

FROM 7350, SILTSTONE, MED GRY-GRY BRN, FRM, MICAC, LOC CARB, V SNDY W/STRNGRS SANDSTONE, WHT, VF-FN, SUBANG, FRI, OCC CLR-LT GRY LOOSE QTZ GRNS, TR GLAUC & NODULAR PYRITE. COAL, AS ABOVE.

DEV 44°45'  
TVD 6205

C=40U AT 43VIS

W 9.6, V 40, F 4.2, PH 10.1, CL 13,000PPM, SD 1/4%, SOL 9%, OIL 8%.

SANDSTONE A/A, ALSO CL WHT, SUBANG-ANG, MED TO COURSE QTZ GRNS

DEV 45°  
TVD 6435FT

C=47U AT 37 VIS