

Schlumberger

ESSEXVILLE
ELECTRIC
W3C-GBO

RECORDED WITH 200 VOLT, 400 GPH
ESSO AUSTRALIA

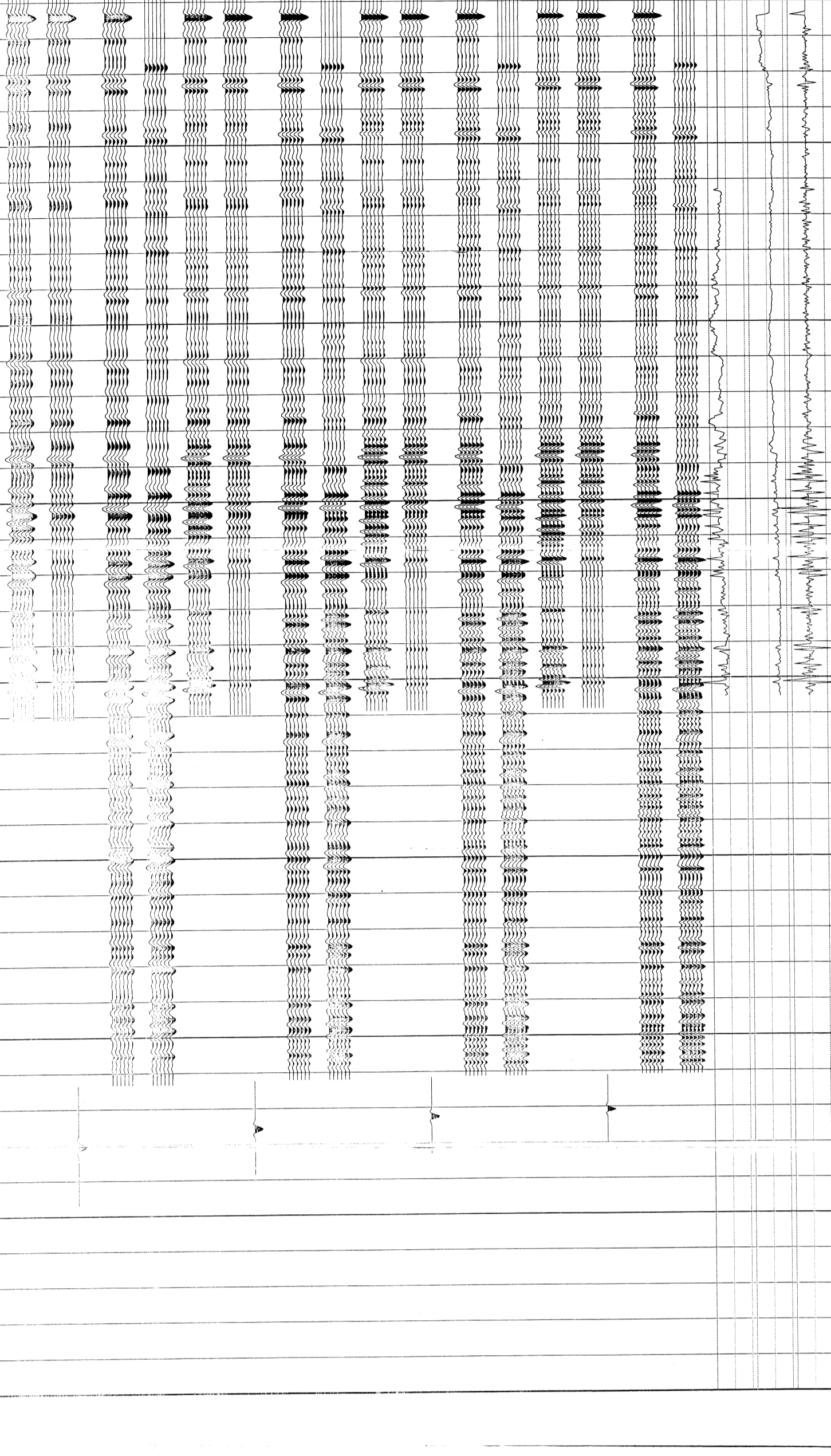
Well: LUDERICK 1
Field: GIPPSLAND
State: VICTORIA
Country: AUSTRALIA
Reference No: 540098

Date Logged: 25 JUNE 1983
Location: 38° 28' 22.61" S
147° 42' 07.88" E

Elevation: 21.0m
DP: 207m
CL: 59.0m
Log Analyst: T. HODGINS
Recorded by: G. MILLER

GEOGRAM FROM WST
RICKER WAVELETS
ZERO PHASE
NORMAL POLARITY

- REFLECTION
- SONIC
- DENSITY
- MULTIPLES ONLY 35HZ
- PRIMARIES AND MULTIPLES 35HZ
- PRIMARIES WITH TRANSMISSION LOS 35HZ
- PRIMARIES 35HZ
- MULTIPLES ONLY 30HZ
- PRIMARIES AND MULTIPLES 30HZ
- PRIMARIES WITH TRANSMISSION LOS 30HZ
- PRIMARIES 30HZ
- MULTIPLES ONLY 25HZ
- PRIMARIES AND MULTIPLES 25HZ
- PRIMARIES WITH TRANSMISSION LOS 25HZ
- PRIMARIES 25HZ
- MULTIPLES ONLY 20HZ
- PRIMARIES AND MULTIPLES 20HZ
- PRIMARIES WITH TRANSMISSION LOS 20HZ
- PRIMARIES 20HZ



CLIENT : ESSO AUSTRALIA LTD
FIELD : GIPPSLAND
WELL : LUDERICK #1

GEOGRAM FROM WST
RICKER WAVELETS
ZERO PHASE
REVERSE POLARITY

- REFLECTION
- SONIC
- DENSITY
- MULTIPLES ONLY 35HZ
- PRIMARIES AND MULTIPLES 35HZ
- PRIMARIES WITH TRANSMISSION LOS 35HZ
- PRIMARIES 35HZ
- MULTIPLES ONLY 30HZ
- PRIMARIES AND MULTIPLES 30HZ
- PRIMARIES WITH TRANSMISSION LOS 30HZ
- PRIMARIES 30HZ
- MULTIPLES ONLY 25HZ
- PRIMARIES AND MULTIPLES 25HZ
- PRIMARIES WITH TRANSMISSION LOS 25HZ
- PRIMARIES 25HZ
- MULTIPLES ONLY 20HZ
- PRIMARIES AND MULTIPLES 20HZ
- PRIMARIES WITH TRANSMISSION LOS 20HZ
- PRIMARIES 20HZ

