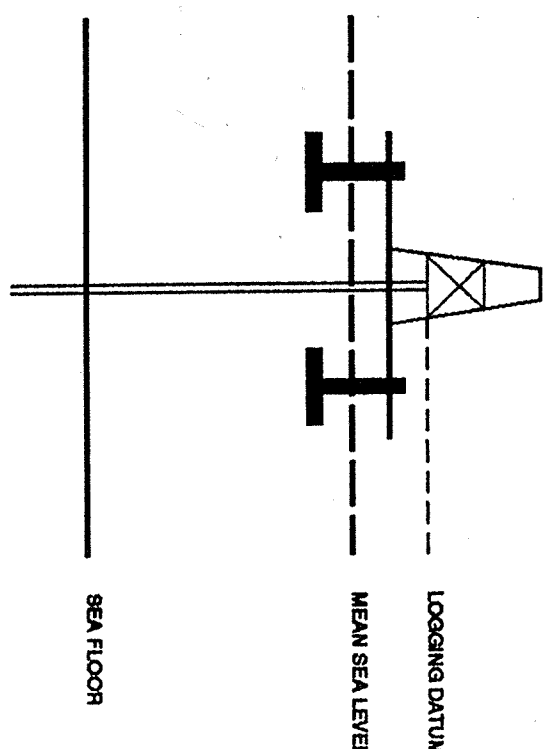


VERTICAL SEISMIC PROFILE

WELL SEISMIC SURVEY STACKED DATA PLOT 1

Company: BHP PETROLEUM
 Well: LONGTOM-1
 Field: WILDCAT
 Country: AUSTRALIA
 Reference No: STJ351117/501118 Interval: 2225.00 to 100.00
 Date Logged: 25-MAY-1995 Date Processed: 23 JUN 1995
 Location: 038 00' 00.00" S 148 18' 54.28" E
 Elevations: KB: 25.30 DF: 25.00 QI: -56.25
 Permanent Datum: MSL Depth Units: METRES
 Logging Datum: 25.00
 Seismic Reference Datum: 0.00



Total Number of Levels: 35
 Depth Reference: SHD
 Time Reference: SHD

Date	Tool	RT Size	Depth	Change Size	Top	Bottom
18-06-1985	DL-343	17.5 M	1225 M	50 M	755 M	
25-06-1985	DL-343	17.5 M	1225 M	50 M	755 M	
25-06-1985	DL-343	17.5 M	1225 M	50 M	755 M	

The well name, location and borehole reference data were furnished by the customer.

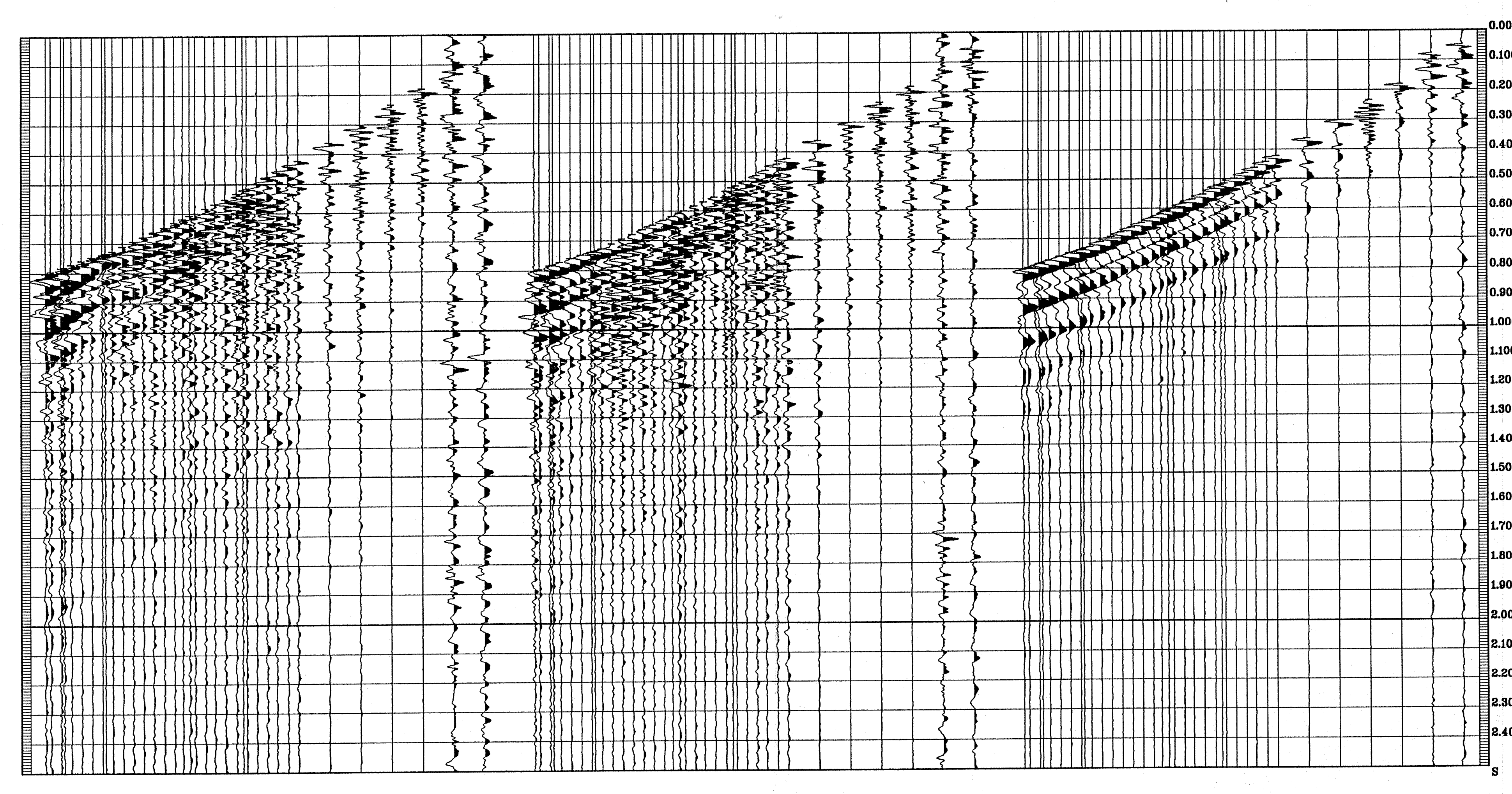
All interpretations are opinions based on inferences from electrical or other measurements and we cannot, and do not guarantee the accuracy or correctness of any interpretations, and we shall not, except in the case of gross or willful negligence on our part, be liable or responsible for any loss, costs, damages or expenses incurred or sustained by anyone resulting from any interpretations made by any of our officers, agents or employees. These interpretations are also subject to Clause 4 of our General Terms and Conditions as set out in our current Price Schedule.

**** MEDIAN STACK ****
 (DOWNHOLE DATA)
 MEDIAN COHERENCY STACK OF THE DOWNHOLE VERTICAL COMPONENT.
 PROCESSING SEQUENCE:
 MEDIAN STACK APPLIED
 BANDPASS FILTER : 5 - 140 HZ
 VERTICAL SCALE : 10 CM/SEC
 POLARITY (SEEG) : REVERSE
 TIMES REFERENCED TO HYDROPHONE

**** MEDIAN STACK ****
 (DOWNHOLE DATA)
 MEDIAN COHERENCY STACK OF THE DOWNHOLE 2. HORIZONTAL COMPONENT.
 PROCESSING SEQUENCE:
 MEDIAN STACK APPLIED
 BANDPASS FILTER : 5 - 140 HZ
 VERTICAL SCALE : 10 CM/SEC
 POLARITY (SEEG) : REVERSE
 TIMES REFERENCED TO HYDROPHONE

**** MEDIAN STACK ****
 (DOWNHOLE DATA)
 MEDIAN COHERENCY STACK OF THE DOWNHOLE 1. HORIZONTAL COMPONENT.
 PROCESSING SEQUENCE:
 MEDIAN STACK APPLIED
 BANDPASS FILTER : 5 - 140 HZ
 VERTICAL SCALE : 10 CM/SEC
 POLARITY (SEEG) : REVERSE
 TIMES REFERENCED TO HYDROPHONE

RAW DEPTH M	TRUE VERTICAL DEPTH MSL	TRANSIT TIME S	LEVEL NO	MAX AMPLITUDE	MIN AMPLITUDE
2500.0	754.0	0.274	30	6792.825	-4004.000
2400.0	754.0	0.274	30	6792.825	-4004.000
2300.0	754.0	0.274	30	6792.825	-4004.000
2200.0	754.0	0.274	30	6792.825	-4004.000
2100.0	754.0	0.274	30	6792.825	-4004.000
2000.0	754.0	0.274	30	6792.825	-4004.000
1900.0	754.0	0.274	30	6792.825	-4004.000
1800.0	754.0	0.274	30	6792.825	-4004.000
1700.0	754.0	0.274	30	6792.825	-4004.000
1600.0	754.0	0.274	30	6792.825	-4004.000
1500.0	754.0	0.274	30	6792.825	-4004.000
1400.0	754.0	0.274	30	6792.825	-4004.000
1300.0	754.0	0.274	30	6792.825	-4004.000
1200.0	754.0	0.274	30	6792.825	-4004.000
1100.0	754.0	0.274	30	6792.825	-4004.000
1000.0	754.0	0.274	30	6792.825	-4004.000
900.0	754.0	0.274	30	6792.825	-4004.000
800.0	754.0	0.274	30	6792.825	-4004.000
700.0	754.0	0.274	30	6792.825	-4004.000
600.0	754.0	0.274	30	6792.825	-4004.000
500.0	754.0	0.274	30	6792.825	-4004.000
400.0	754.0	0.274	30	6792.825	-4004.000
300.0	754.0	0.274	30	6792.825	-4004.000
200.0	754.0	0.274	30	6792.825	-4004.000
100.0	754.0	0.274	30	6792.825	-4004.000
0.0	754.0	0.274	30	6792.825	-4004.000



COMPANY BHP PETROLEUM
 FIELD WILDCAT
 WELL LONGTOM-1
 COUNTRY AUSTRALIA

