

BHP Petroleum

Log
Interpretation
Petrophysics Group

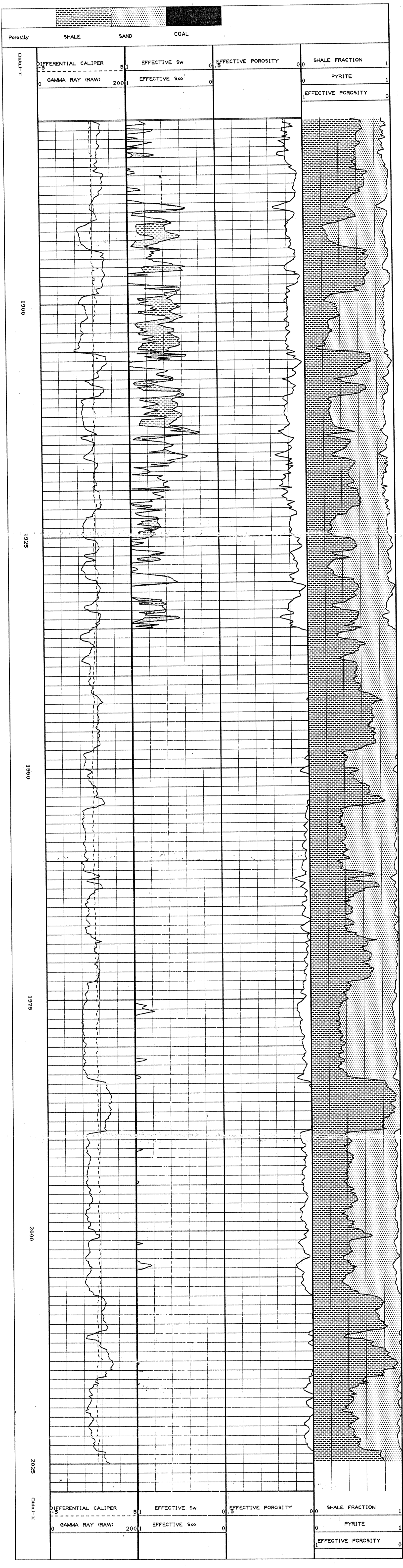
Well : LONGTOM-1
Company : BHP
Field : LONGTOM
Permit : VIC/P1
State : VIC

SCALE
1 : 200

Location : Gippsland
Lat: 38°05'59.89"S Lon: 148°18'54.11"E
Permanent Datum MSL Elev. 0.0m
Loss measured from RT Ris: O. Bounty
Drillings measured from RT

Date Processed 28 May 95
Suite Used 2
Date Logged 22 May 95
Top Interp Interval 1889.0m
Bot Interp Interval 1950.0m
Interp Model BLISS
Rw @ 25 DaqC 0.15
EQUIV NaCl conc. ppm 40,000
Rmt @ 20 DaqC 0.080
EQUIV NaCl conc. ppm 90,000

Petrophysicist: Anzjo Carnovskis



WELL : LONGTOM-1
SUMMARY OF RESULTS

CUT OFFS USED
Porosity >= .00
Vshale >= .50
Wat. Sat. >= 1.00

ZONE	DEPTH MD	GROSS	NET	N/G	POR	SW	E.P.C. (m)	E.H.C. (m)
<ALL>	1891.000 - 1935.000	44.0	25.9	59.	10.	57.	2.48	1.07
Unit 1	1891.000 - 1895.000	4.0	3.0	76.	9.	56.	.27	.12
Unit 2	1899.000 - 1905.500	6.5	6.2	96.	10.	49.	.62	.32
Unit 3	1908.000 - 1917.000	9.0	5.5	61.	11.	48.	.60	.31
Unit 4	1922.000 - 1926.000	4.0	3.2	80.	8.	74.	.26	.07
Unit 5	1926.000 - 1931.000	5.0	3.0	61.	7.	77.	.22	.05
Unit 6	1931.000 - 1935.000	4.0	1.5	38.	10.	66.	.15	.05

N.B. *** All thicknesses are calculated using data recorded along hole. ***