

RAW AND STACKED CHECKSHOT DATA

Company: ESSO AUSTRALIA LTD
Well: LEATHERJACKET - 1 W/LR 102.1
Field: AUSTRALIA
Reference No: 560296 Interval: 0.00 to 951.00
Date Logged: 01/03/86 Date Processed: 10/03/86
Location: 038 05' 46.83" S 148 46' 41.87" E
Elevation: KB 210 M GR 20.7 M QZ -106.0 M

Permanent Datum: MSL Depth Units: METRES
FIELD INFORMATION
Logbook Dates: ELEVATION ABOVE MEAN SEA LEVEL
LOGGING DEPTH: 201 M
Science Reference Datum: MSL -106.0 M
Sonic Calibration by Check Shot: YES Sonic Edited by Analyst: YES
Two-Way Time Sample Interval: 2 ms Environment: offshore
True Vertical Depth Corrections Applied: NO
Source of True Vertical Depth Data: Manufacturer's Data

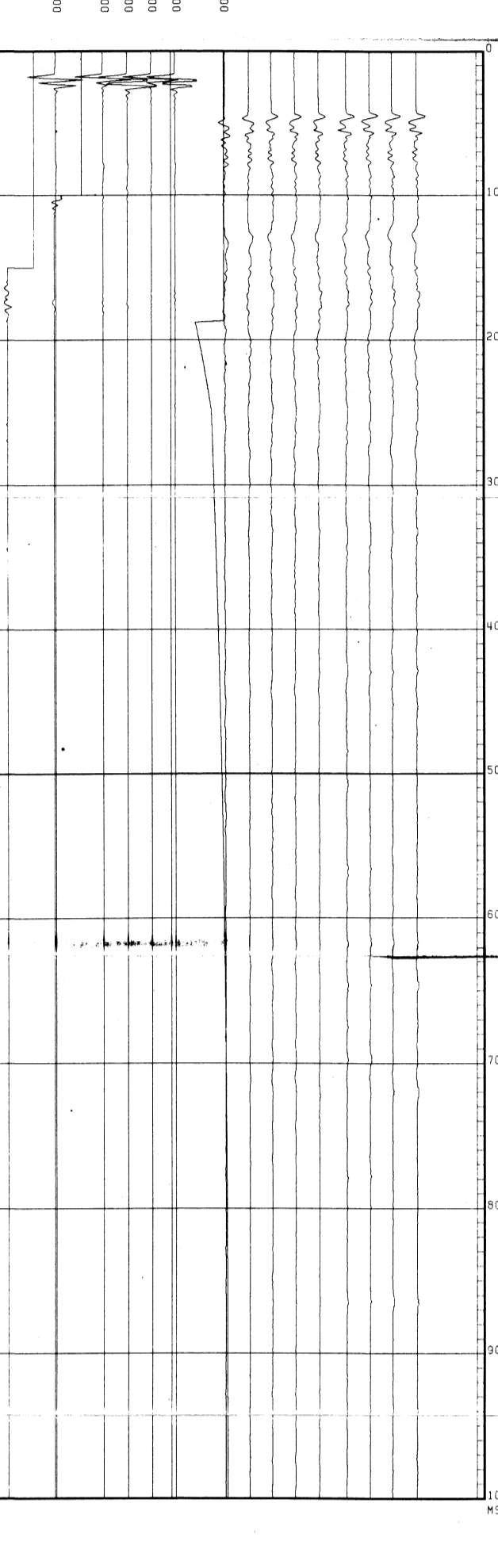
Time	Depth	Time	Depth	Time	Depth
1	0.000	1	0.000	1	0.000
2	0.000	2	0.000	2	0.000
3	0.000	3	0.000	3	0.000
4	0.000	4	0.000	4	0.000
5	0.000	5	0.000	5	0.000
6	0.000	6	0.000	6	0.000
7	0.000	7	0.000	7	0.000
8	0.000	8	0.000	8	0.000
9	0.000	9	0.000	9	0.000
10	0.000	10	0.000	10	0.000
11	0.000	11	0.000	11	0.000
12	0.000	12	0.000	12	0.000
13	0.000	13	0.000	13	0.000
14	0.000	14	0.000	14	0.000
15	0.000	15	0.000	15	0.000
16	0.000	16	0.000	16	0.000
17	0.000	17	0.000	17	0.000
18	0.000	18	0.000	18	0.000
19	0.000	19	0.000	19	0.000
20	0.000	20	0.000	20	0.000
21	0.000	21	0.000	21	0.000
22	0.000	22	0.000	22	0.000
23	0.000	23	0.000	23	0.000
24	0.000	24	0.000	24	0.000
25	0.000	25	0.000	25	0.000
26	0.000	26	0.000	26	0.000
27	0.000	27	0.000	27	0.000
28	0.000	28	0.000	28	0.000
29	0.000	29	0.000	29	0.000
30	0.000	30	0.000	30	0.000
31	0.000	31	0.000	31	0.000
32	0.000	32	0.000	32	0.000
33	0.000	33	0.000	33	0.000
34	0.000	34	0.000	34	0.000
35	0.000	35	0.000	35	0.000
36	0.000	36	0.000	36	0.000
37	0.000	37	0.000	37	0.000
38	0.000	38	0.000	38	0.000
39	0.000	39	0.000	39	0.000
40	0.000	40	0.000	40	0.000
41	0.000	41	0.000	41	0.000
42	0.000	42	0.000	42	0.000
43	0.000	43	0.000	43	0.000
44	0.000	44	0.000	44	0.000
45	0.000	45	0.000	45	0.000
46	0.000	46	0.000	46	0.000
47	0.000	47	0.000	47	0.000
48	0.000	48	0.000	48	0.000
49	0.000	49	0.000	49	0.000
50	0.000	50	0.000	50	0.000
51	0.000	51	0.000	51	0.000
52	0.000	52	0.000	52	0.000
53	0.000	53	0.000	53	0.000
54	0.000	54	0.000	54	0.000
55	0.000	55	0.000	55	0.000
56	0.000	56	0.000	56	0.000
57	0.000	57	0.000	57	0.000
58	0.000	58	0.000	58	0.000
59	0.000	59	0.000	59	0.000
60	0.000	60	0.000	60	0.000
61	0.000	61	0.000	61	0.000
62	0.000	62	0.000	62	0.000
63	0.000	63	0.000	63	0.000
64	0.000	64	0.000	64	0.000
65	0.000	65	0.000	65	0.000
66	0.000	66	0.000	66	0.000
67	0.000	67	0.000	67	0.000
68	0.000	68	0.000	68	0.000
69	0.000	69	0.000	69	0.000
70	0.000	70	0.000	70	0.000
71	0.000	71	0.000	71	0.000
72	0.000	72	0.000	72	0.000
73	0.000	73	0.000	73	0.000
74	0.000	74	0.000	74	0.000
75	0.000	75	0.000	75	0.000
76	0.000	76	0.000	76	0.000
77	0.000	77	0.000	77	0.000
78	0.000	78	0.000	78	0.000
79	0.000	79	0.000	79	0.000
80	0.000	80	0.000	80	0.000
81	0.000	81	0.000	81	0.000
82	0.000	82	0.000	82	0.000
83	0.000	83	0.000	83	0.000
84	0.000	84	0.000	84	0.000
85	0.000	85	0.000	85	0.000
86	0.000	86	0.000	86	0.000
87	0.000	87	0.000	87	0.000
88	0.000	88	0.000	88	0.000
89	0.000	89	0.000	89	0.000
90	0.000	90	0.000	90	0.000
91	0.000	91	0.000	91	0.000
92	0.000	92	0.000	92	0.000
93	0.000	93	0.000	93	0.000
94	0.000	94	0.000	94	0.000
95	0.000	95	0.000	95	0.000

ESSENTIAL LOGGING ASSUMPTIONS
Equal time step model of horizontal layering.
P-wave acoustic waves at normal incidence.
No intrinsic attenuation.
POLARITY
An upgoing wave, reflected by an increase in acoustic impedance with depth, is displayed as a white trough under normal polarity.
SCALING
All signals displayed in the loggram results correspond to a weight converted with a reflection coefficient of 0.5 (A decrease in acoustic impedance with depth).
REFERENCES
Sonic log interval 0.05 sec maximum delay
Density log interval 0.05 sec maximum delay

CLIENT : ESSO AUSTRALIA LTD
FIELD : WILDCAT
WELL : LEATHERJACKET - 1

SURFACE HYDROPHOT AND ACCELEROMETER RAW DATA

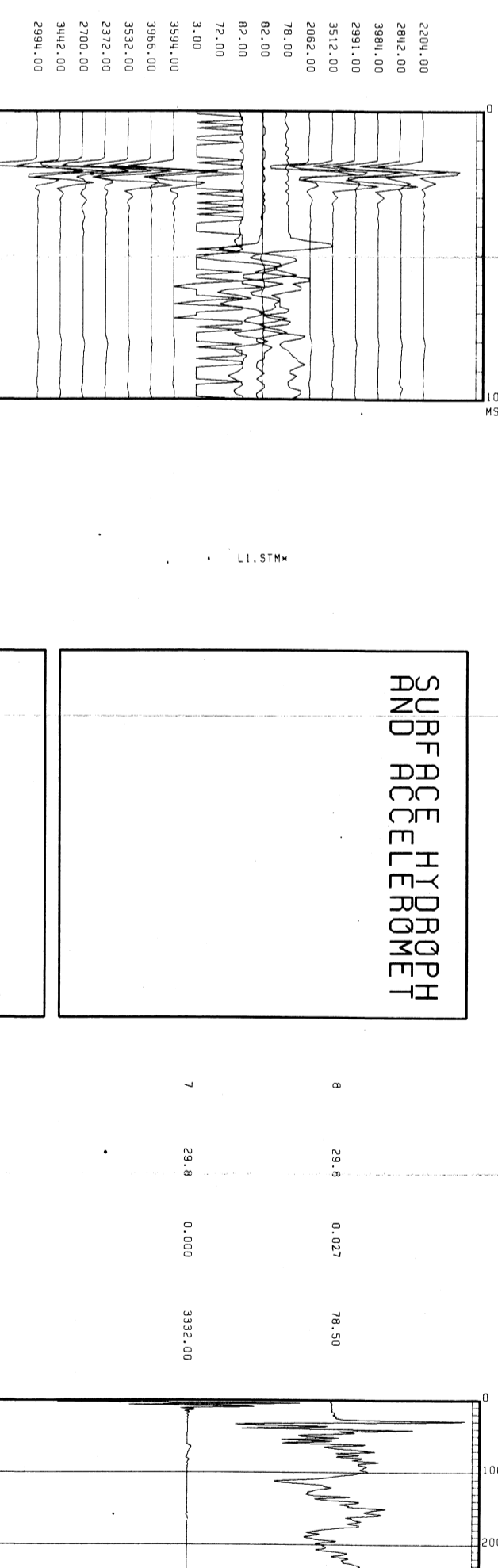
Plot #1
RAW DATA
DOWNHOLE SENSOR
LEVELS 1 - 8
LEATHERJACKET - 1



CLIENT : ESSO AUSTRALIA LTD
FIELD : WILDCAT
WELL : LEATHERJACKET - 1

SURFACE HYDROPHOT AND ACCELEROMETER RAW DATA

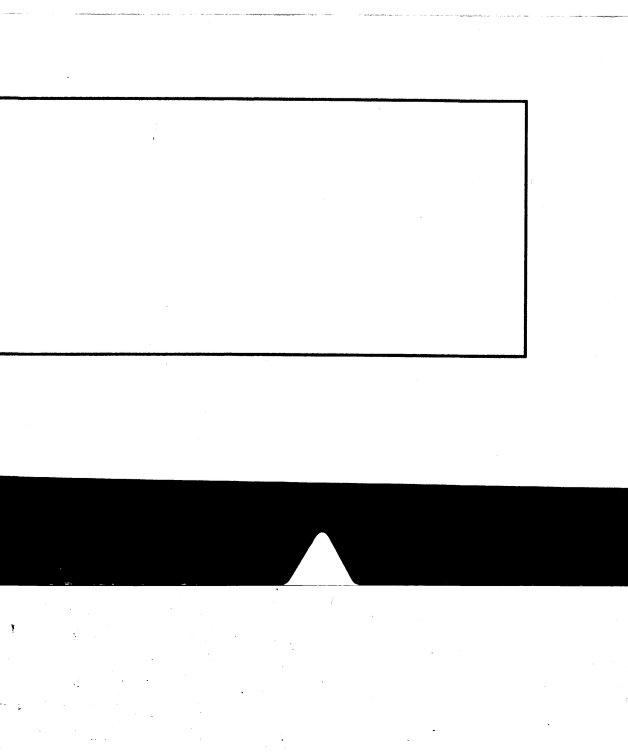
Plot #2
RAW DATA
SURFACE SENSOR
LEVELS 1 - 8
LEATHERJACKET - 1



CLIENT : ESSO AUSTRALIA LTD
FIELD : WILDCAT
WELL : LEATHERJACKET - 1

SURFACE HYDROPHOT AND ACCELEROMETER STACKED DATA

Plot #3
STACKED DATA
LEVELS 1 - 8
LEATHERJACKET - 1
SHOTS WITH LOW
S/N HAVE BEEN
FILLOUT
STACKING



CLIENT : ESSO AUSTRALIA LTD
FIELD : WILDCAT
WELL : LEATHERJACKET - 1

COMPANY ESSO AUSTRALIA LTD
FIELD WILDCAT
WELL LEATHERJACKET - 1
COUNTRY AUSTRALIA

