



PLATE 3: 1164.5 m

Reflected Light

This is a clarite grain consisting chiefly of huminite.

Field Dimensions 0.26 mm x 0.18 mm

DEPT. NAT. RES & ENV



PE906067

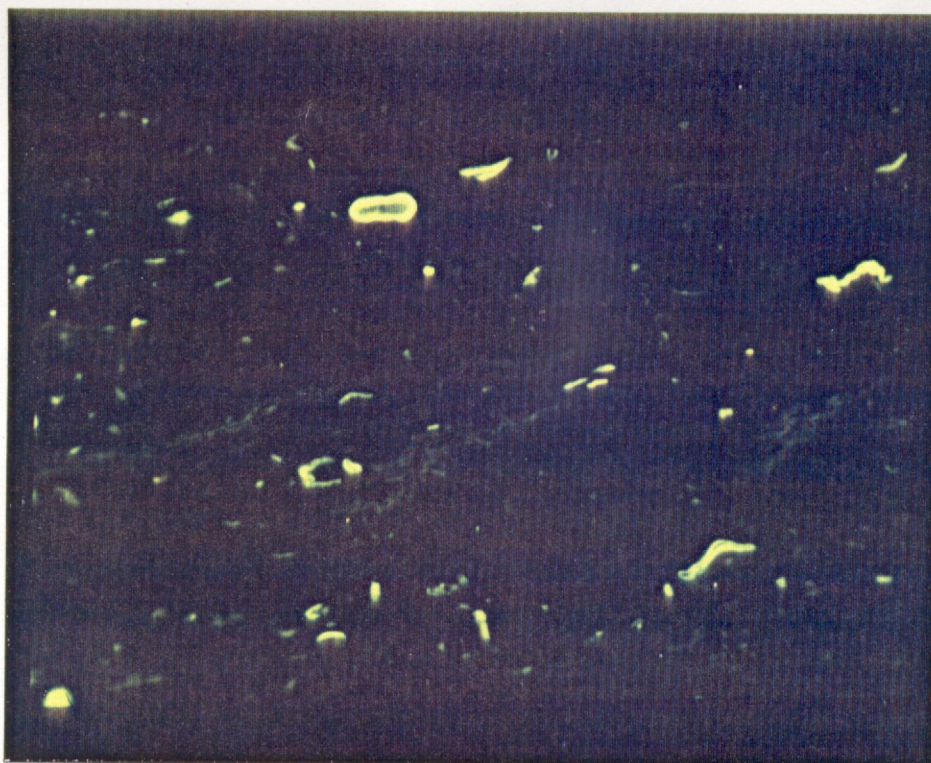


PLATE 4: 1164.5 m

Fluorescence Mode

This is the same field as Plate 3 showing the sporinite, resinite, suberinite, cutinite and liptodetrinite in the clarite.

Field Dimensions 0.26 mm x 0.18 mm