



PLATE 1: 1260 m

Reflected Light

Cutinite, resinite and huminite in a carbonaceous shale. Much of the original leaf structure is still preserved.

Field Dimensions 0.26 mm x 0.18 mm

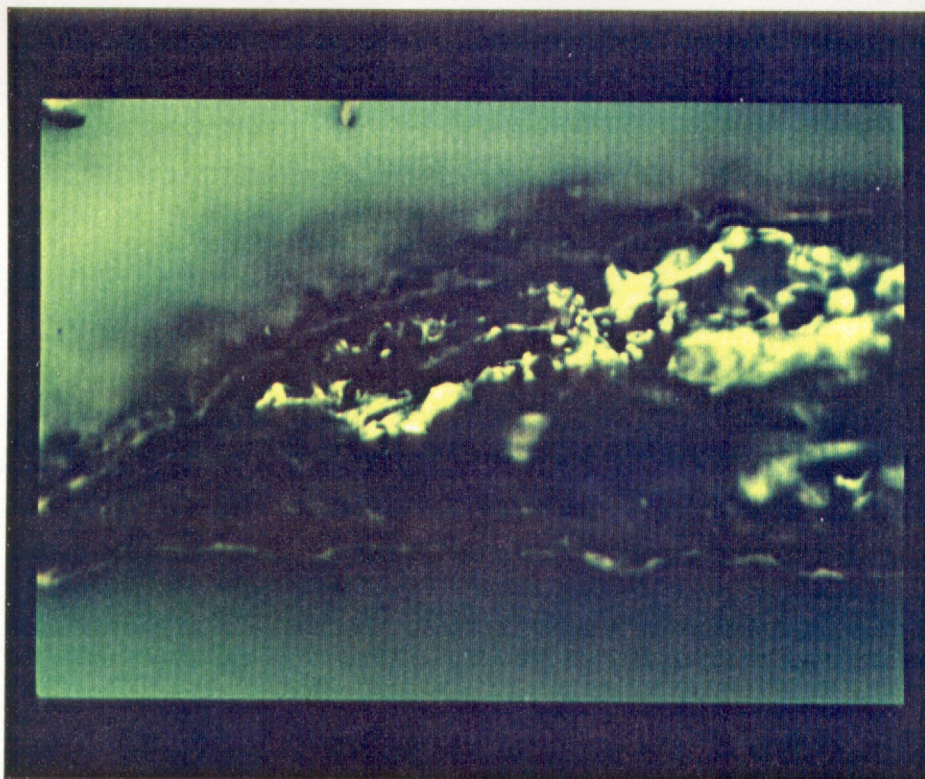


PLATE 2: 1260 m

Fluorescence Mode

This is the same field as Plate 1 in fluorescence mode illustrating yellow-green fluorescence of the resinite and the moderate orange fluorescence of the cutinite.

Field Dimensions 0.26 mm x 0.18 mm