

OIL and GAS DIVISION

FINAL STACK

LINE: GA81-84

S.P. 1 to S.P. 1225

AIR GUN

DEPT. NAT. RES & ENV
PE902586

LEGEND
V = INTERSECTION
V = VELOCITY ANALYSIS
WATER DEPTH IN METRES

SE
SHOT DIRECTION = 345° DEGREES
1 KM SCALE

4800% TIME SECTION (STK, TVF, AGC)

AUSTRALIAN AQUITAINE PETROLEUM
GAB1 SEISMIC SURVEY

AREA: VIC / P17

WESTERN G EOPHYSICAL
DIVISION OF LITTON INDUSTRIES
SINGAPORE DIGITAL CENTRE

RECORDED NOVEMBER 1981
PROCESSED JANUARY 1982
FINAL REEL NO. 313592

RECORDING DATA
BOAT: Western Odyssey Party 86
Map Location: M17
Air Gun: 4500 psi 500cc in.
SOURCE: Gun Depth: 6 m
S.P. Interval: 25 m
Pop Interval: 25 m
Shooting Rate: 40 Pops / km
Pops / S.P.: 1

INSTRUMENTS: System: DPS II
Filter: 8 Hz - 128 Hz
Record Length: 5 sec
Sample Rate: 5 ms
Format: 5ag-B
Polarity: Normal

CABLE: Streamer: 2400 m
Groups: 96
Sonometers: 20 per group
Group Interval: 25 m
Lead In: 245 m
Cable Depth: 11 m average

EDIT: Demultiplex to trace sequential
Geophone amplitude ft. pt.
Sample rate: 4 ms
ATS: Summing 2 adjacent traces: 4 ms
PRE-PROCESSOR: Data arranged into common
depth families

D.B.S.: Geometric spreading compensation
Conversion to fixed point format
D.B.S. type - local squares
Minimum phase inverse filter
2 equal windows
Auto corr. length: 192 ms
Min. prediction lag: 12 ms
Operator length: 200 ms
Sample rate: 4 ms

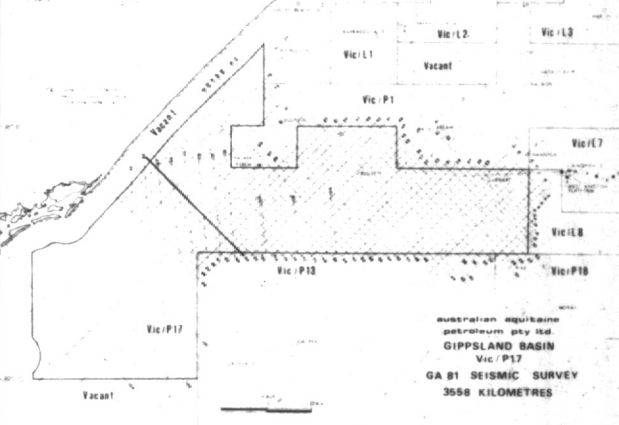
VELOCITY ANALYSIS: Every 40 cells 2 cells / analysis
N.M.O. STACK: 4800% N.M.O. correction
Sample rate: 4 ms
RESIDUAL: O.C. of stacking velocities
Rerack if necessary

T.V. FILTER: Slope 18-36 dB/Oct
Time Zone: L.C. N.C.
0000: 15 90
1000: 15 90
2000: 15 90
3000: 15 90
4000: 15 90

DATUM PLANE SEA LEVEL
CORRECTION APPLIED
GUN DEPTH + 004 ms
CABLE DEPTH + 007 ms
TOTAL CORR + 011 ms

POLARITY NORMAL
COMPRESSION PULSE REPRESENTED
BY NEGATIVE NUMBER (TROUGH)

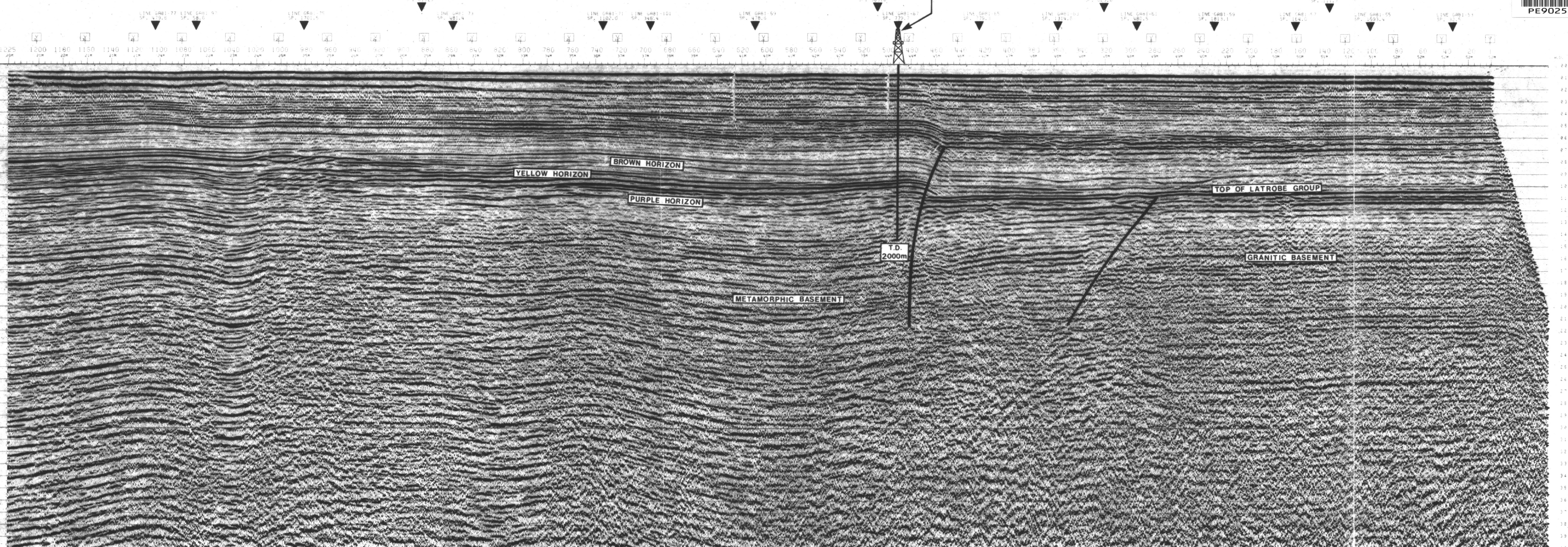
GAIN: A.G.C. gain 600 ms window
SUBSAMPLING: Sample rate: 2 ms
PLAYBACK: Scale - Horizontal: 20 m / sec
Vertical: 5 ms / sec
Sample rate: 2 ms
Geophone gain: 15 dB



KYARRA-1

OFFSET 8.75m S.W.

Table of stationing data for line GA81-84, showing S.P. (Shot Point) and corresponding coordinates (X, Y) for each station. The table lists stations from S.P. 1225 down to S.P. 1.



LINE GA81-84
S.P. 1 - 1225