

# GEOGRAM\*

(Synthetic Seismogram)

Company: ESSO AUSTRALIA LTD

Well: KINGFISH 9

Field: KINGFISH

Country: AUSTRALIA

Reference No: 560781

Date Logged: 23-04-92

Location: 38°53'0"S

Surveys: KB: 22:00

Permanent Datum: MSL

Logging Datum: 22:00

Seismic Reference Datum: 0:00

Two-Way Time Sample Interval: 2 ms

Environment: Offshore

True Vertical Depth Corrections Applied:

Source of True Vertical Depth Data:

Maximum Hole Deviation:

LOG INFORMATION

Engineer: M.H.E.L.M.

Location: SU

Program Version: 32.4

Operator: T. SODJAN

Case: 517

Baseline: 20.0

ELEVATION ABOVE MEAN SEA LEVEL

Run	Date	Tool Type	Bit Size	Depth	Casing Size	Top Depth	Bottom Depth
1	19-04-92	AS	AS			803 M	2010 M
2	23-04-92	AS	AS			204 M	823 M

GEOSRAM MODEL ASSUMPTIONS

Equal time slice model of horizontal plane layers.

Plane acoustic waves at normal incidence.

No intrinsic attenuation.

POLARITY

An upgoing wave, reflected by an increase in acoustic impedance with depth, is displayed as a white trough under normal polarity.

SIGNATURES

All signatures displayed in the Geogram results correspond to a weight computed with a reflection coefficient of -0.5 (A decreases in acoustic impedance with depth).

REMARKS

FOLD HERE

The well name, location and borehole reference data were furnished by the Customer.

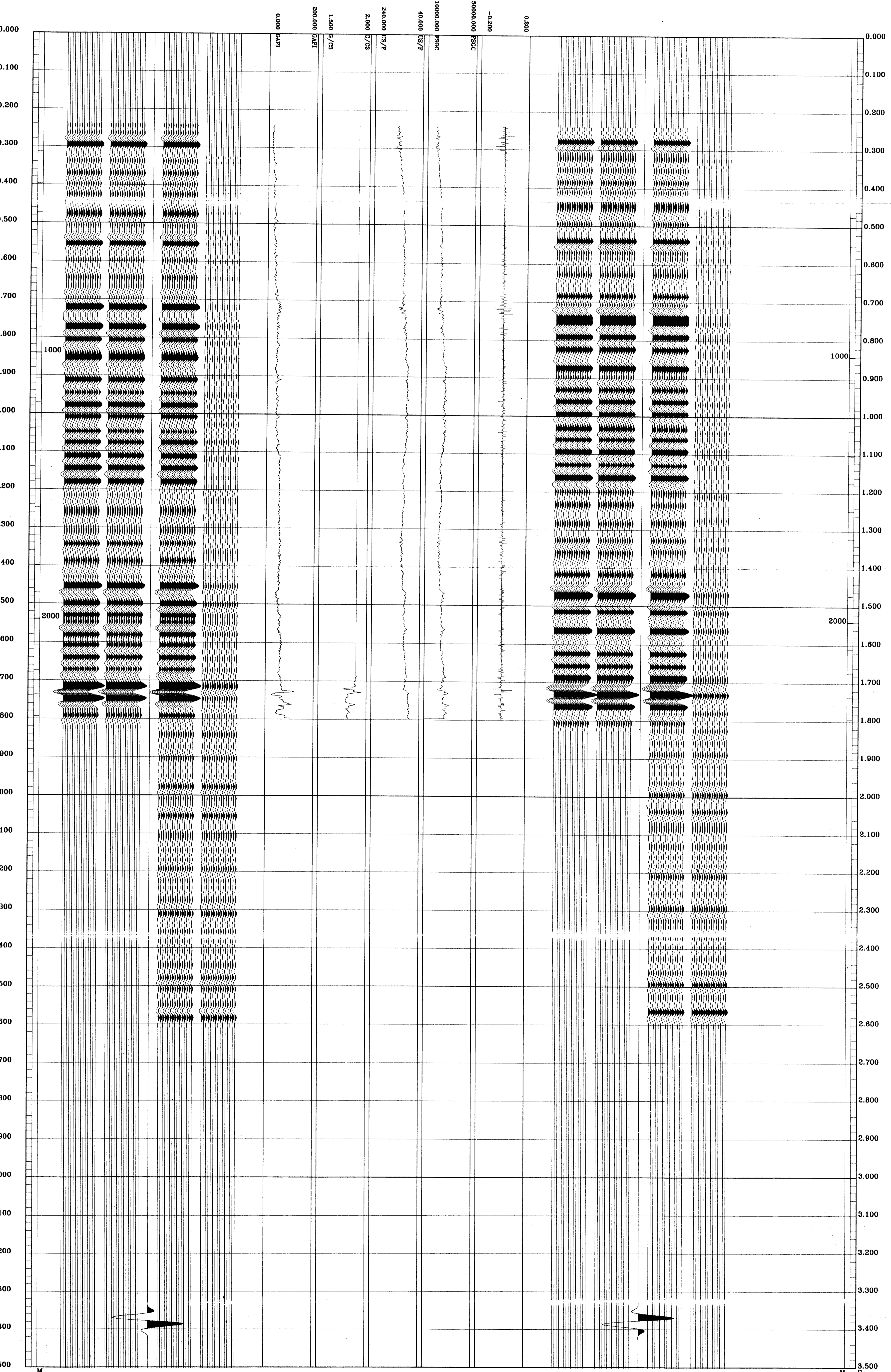
All interpretations are opinions based on inference from electrical or other measurements and we cannot, and do not guarantee the accuracy or correctness of any interpretations and we shall not, except in the case of gross or willful negligence on our part, be liable or responsible for any loss, costs, damages or expenses incurred or sustained by anyone relying on any interpretations made by any of our officers, agents or employees. These interpretations are also subject to Clause 4 of our General Terms and Conditions as set out in our current Price Schedule.

## \*\* GEOGRAM \*\*

### 25 HERTZ ZERO PHASE RICKER WAVELET WITH -90 DEG. PHASE SHIFT

#### KINGFISH-9

- MULTIPLES ONLY  
REVERSE POLARITY
- PRIMARIES AND MULTIPLES  
REVERSE POLARITY
- PRIMARIES WITH TRANSMISSION LOSS  
REVERSE POLARITY
- PRIMARIES  
REVERSE POLARITY
- REFLECTION
- ACOUSTIC  
IMPEDANCE
- SONIC
- DENSITY
- GAMMA RAY
- MULTIPLES ONLY  
NORMAL POLARITY
- PRIMARIES AND MULTIPLES  
NORMAL POLARITY
- PRIMARIES WITH TRANSMISSION LOSS  
NORMAL POLARITY
- PRIMARIES  
NORMAL POLARITY



COMPANY: ESSO AUSTRALIA LTD  
 FIELD: KINGFISH  
 WELL: KINGFISH 9  
 COUNTRY: AUSTRALIA

Schlumberger