



WELL KINGFISH NO. 5
 COMPANY ESSO
 COUNTY GIPPSLAND BASIN
 STATE VICTORIA

LEGEND
 DEPTH CORRESPONDS TO DRILL
 PIPE MEASUREMENTS.
 NB NEW BIT
 NCB NEW CORE BIT
 DST DRILL STEM TEST
 NR NO RETURNS
 TG TRIP GAS
 CO CIRCULATE OUT RETURNS

LITHOLOGY

SAND	GRANITE WASH	LIME STONE	CHERT
SHALE	GYP. ANHYDRITE	DOLOMITE	LIGNITE

25
 25

CUTTINGS ANALYSIS

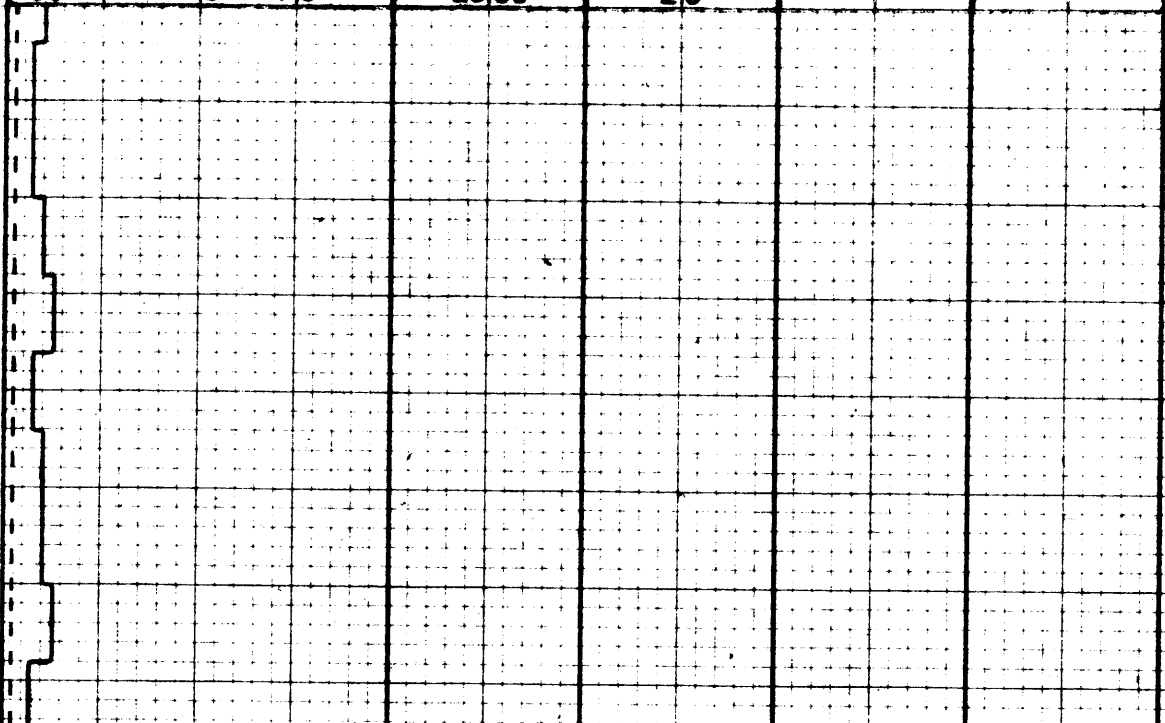
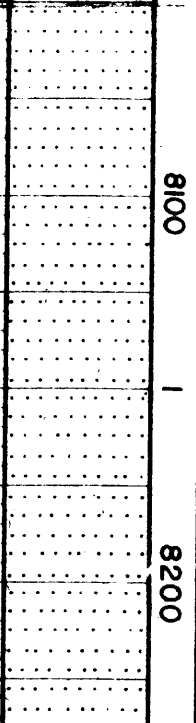
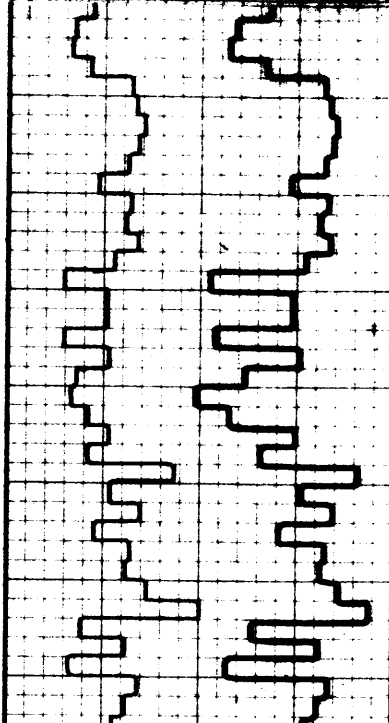
TOTAL GAS _____
 METHANE _____
 LIQUID HYDROCARBONS (C₆₊) _____

DRILLING RATE
 FT. PER HR MIN. PER FT.
 3000 2000 1000

LITHOLOGY

ppm HYDROCARBONS IN MUD M=1000

	C ₁			C ₂	C ₃	C ₄	C ₅₊
	1M	5M	10M	1M	1M	1M	1M
OIL TSG	2.5	50	7.5	2500	25		



OIL TSG

SANDST: QTZ, WH,
 MED.-CRSE., UNCONS.,
 SA-R, WELL SORTED.

C.O. RUN E-LOGS

8100
 8200
 8300

20 STAND WIPER TRIP, P.O.H.
 T.D. 8240'

DEPT. NAT. RES & ENV

 PE603505