



WELL LOGGING SERVICE

WELL COMPANY KINGFISH NO. 5  
ESSO  
COUNTY GIPPSLAND BASIN  
STATE VICTORIA

LEGEND  
DEPTH CORRESPONDS TO DRILL  
PIPE MEASUREMENTS.  
NB NEW BIT  
NCB NEW CORE BIT  
DST DRILL STEM TEST  
NR NO RETURNS  
TG TRIP GAS  
CO CIRCULATE OUT RETURNS

LITHOLOGY  
SAND  
GRANITE WASH  
LIME STONE  
SHALE  
GYP ANHYDRITE  
DOLOMITE

CHERT  
LIGNITE

8  
25

CUTTINGS ANALYSIS

TOTAL GAS \_\_\_\_\_

METHANE \_\_\_\_\_

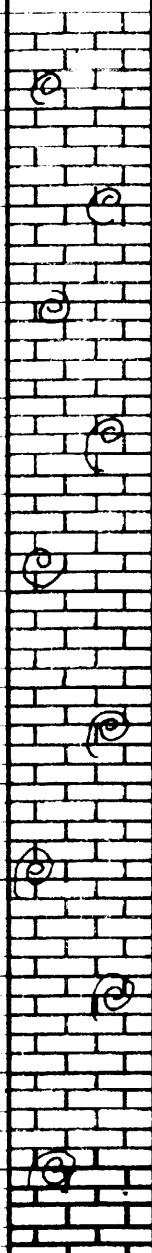
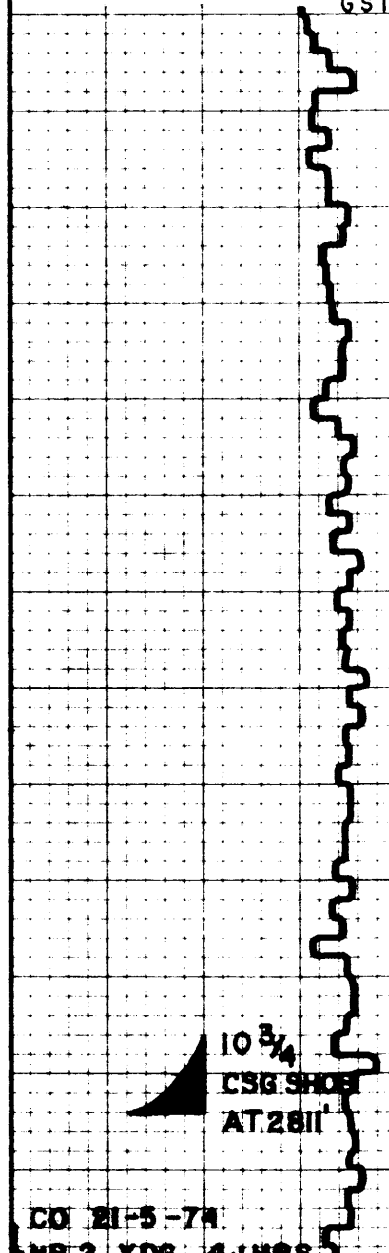
LIQUID HYDROCARBONS  
(C<sub>6+</sub>) \_\_\_\_\_ 6+ \_\_\_\_\_

DRILLING RATE  
 FT PER HR.  MIN. PER FT  
1500 1000 500  
VISUAL POROSITY  
GST

LITHOLOGY

ppm HYDROCARBONS IN MUD M=1000

C <sub>1</sub>			C <sub>2</sub>		C <sub>3</sub>		C <sub>4</sub>		C <sub>5+</sub>	
OIL	1M	5M	10M	O	1M	O	1M	O	1M	OIL
TSG				TSG		TSG		TSG		TSG
	2.5	5.0	7.5		25.00		2.5			



2600  
2700  
2800

NO GAS

CO<sub>2</sub> 5000  
PPM +

NO H<sub>2</sub>S

CALCARENITE: LT GY  
SILTY, FOSS-BRY

CO 21-5-74  
NB 2, XDR, 4 HRS

DRILL 13 3/4" HOLE TO 2840'  
DRILLING 9 7/8" HOLE

RUNE LOGS

WIPER TRIP

DEPT. NAT. RES & ENV



PE603488