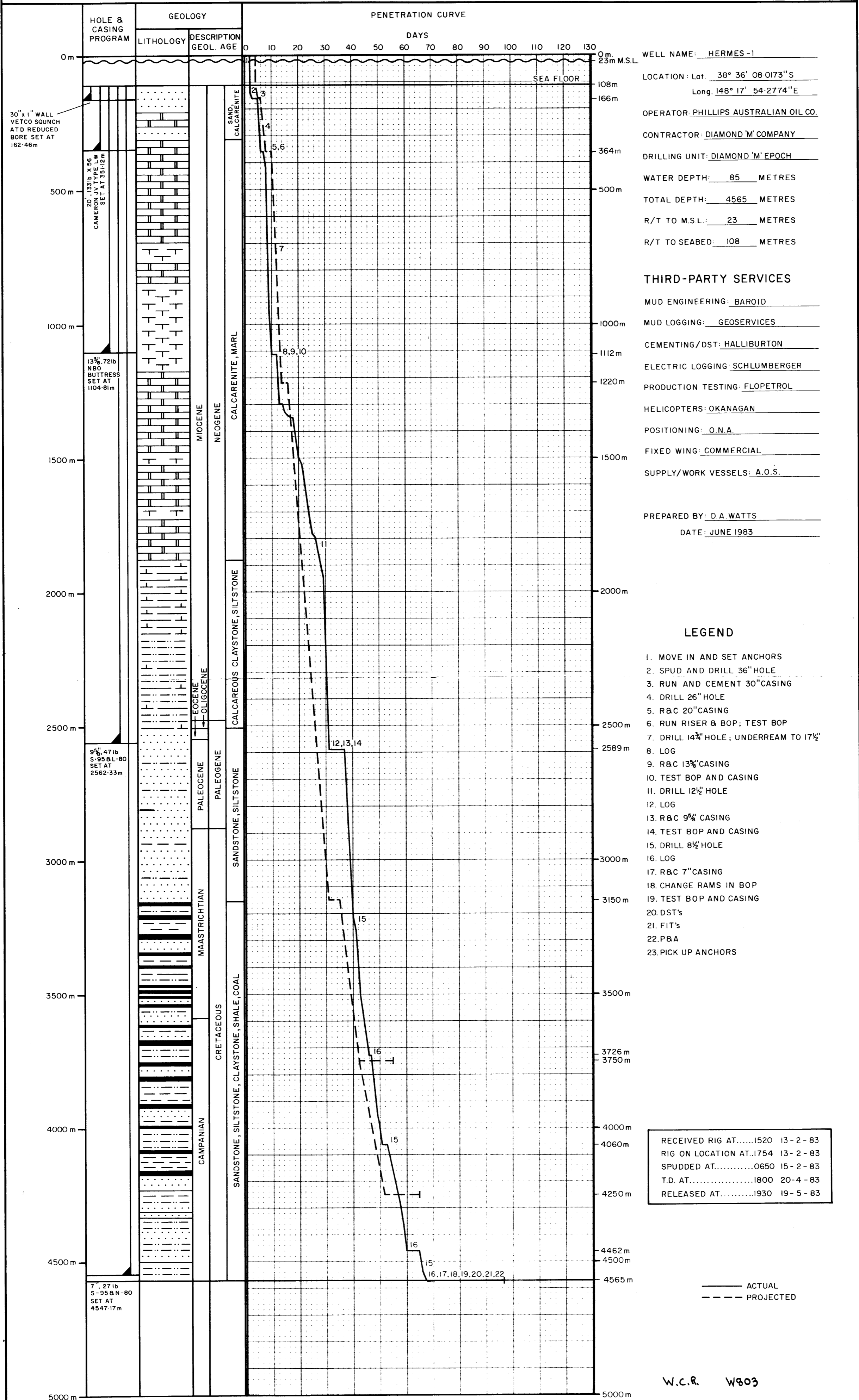


PHILLIPS AUSTRALIAN OIL CO.  
**OPERATION SUMMARY**  
**HERMES No.1**



DEPT. NAT. RES & ENV  
 PE902583



WELL NAME: HERMES -1  
 LOCATION: Lat. 38° 36' 08.0173" S  
 Long. 148° 17' 54.2774" E  
 OPERATOR: PHILLIPS AUSTRALIAN OIL CO.  
 CONTRACTOR: DIAMOND 'M' COMPANY  
 DRILLING UNIT: DIAMOND 'M' EPOCH  
 WATER DEPTH: 85 METRES  
 TOTAL DEPTH: 4565 METRES  
 R/T TO M.S.L.: 23 METRES  
 R/T TO SEABED: 108 METRES

**THIRD-PARTY SERVICES**

MUD ENGINEERING: BAROID  
 MUD LOGGING: GEOSERVICES  
 CEMENTING/DST: HALLIBURTON  
 ELECTRIC LOGGING: SCHLUMBERGER  
 PRODUCTION TESTING: FLOPETROL  
 HELICOPTERS: OKANAGAN  
 POSITIONING: O.N.A.  
 FIXED WING: COMMERCIAL  
 SUPPLY/WORK VESSELS: A.O.S.

PREPARED BY: D.A. WATTS  
 DATE: JUNE 1983

- LEGEND**
1. MOVE IN AND SET ANCHORS
  2. SPUD AND DRILL 36" HOLE
  3. RUN AND CEMENT 30" CASING
  4. DRILL 26" HOLE
  5. R&C 20" CASING
  6. RUN RISER & BOP; TEST BOP
  7. DRILL 14 3/4" HOLE; UNDERREAM TO 17 1/2"
  8. LOG
  9. R&C 13 3/8" CASING
  10. TEST BOP AND CASING
  11. DRILL 12 1/2" HOLE
  12. LOG
  13. R&C 9 5/8" CASING
  14. TEST BOP AND CASING
  15. DRILL 8 1/2" HOLE
  16. LOG
  17. R&C 7" CASING
  18. CHANGE RAMS IN BOP
  19. TEST BOP AND CASING
  20. DST's
  21. FIT's
  22. P&A
  23. PICK UP ANCHORS

RECEIVED RIG AT.....1520 13-2-83  
 RIG ON LOCATION AT...1754 13-2-83  
 SPUDDED AT.....0650 15-2-83  
 T.D. AT.....1800 20-4-83  
 RELEASED AT.....1930 19-5-83

— ACTUAL  
 - - - - - PROJECTED

W.C.R. W803