

GEOGRAM*

(Synthetic Seismogram)

Company: ESSO AUSTRALIA LTD. DEPT. NAT. RES. & ENV. PE603196

Well: HARLEQUIN #1

Field: WILDCAT

Country: AUSTRALIA

Reference No: 569304 Interval: 0.00 to 2574.00

Date Logged: 1 FEB 89 Date Processed: 10 FEB 89

Location: 038 11 59.94 S 147 42 28.06 E

Elevations: KB: 21.00 DF: 20.70 GL: -43.00

Permanent Datum: MSL Depth Units: METRES

LOG INFORMATION

FIELD RECORDING: Engineer: Y.G.ZHANG Location: Program Version: 30.4

COMPUTATION: Analyst: N.SMITH Centre: SYJ Baseline: 16.900X2

ELEVATION ABOVE MEAN SEA LEVEL

Logging Datum: 21.00

Seismic Reference Datum: 0.00

Sonic Calibration By Check Shots: YES Sonic Edited By Analyst: YES

Two-Way Time Sample Interval: 2 ms Environment: Onshore

True Vertical Depth Corrections Applied: N/A

Source of True Vertical Depth Data: Maximum Hole Deviation:

Run	Date	Tool Type	Bit Size/Depth	Casing Size/Depth	Top Depth	Bottom Depth
1		BHC			200.0 M	783.0 M
2	1 FEB 89	BHC	12 1/4" @ 2574.5 M	13 3/8" @ 780 M	746.0	2546.5

VSP Run	Date	Gun Offset	Hydro Offset	Gun Elevation	Hydro Elevation	Gun Azimuth	Hydro Azimuth
1	1 FEB 89	40 M	40 M	-8.1 M BELOW GL	-8.1 M BELOW GL		

GEOGRAM MODEL ASSUMPTIONS

Equal time slice model of horizontal plane layers.

Plane acoustic waves at normal incidence.

No intrinsic attenuation.

POLARITY

An upgoing wave, reflected by an increase in acoustic impedance with depth, is displayed as a white trough under normal polarity.

SIGNATURES

All signatures displayed in the Geogram results correspond to a wavelet convolved with a reflection coefficient of -0.5 (A decrease in acoustic impedance with depth).

REMARKS

25 HZ ZERO PHASE

10 CM/SEC

The well name, location and borehole reference data were furnished by the customer.

All interpretations are opinions based on inferences from electrical or other measurements and we cannot, and do not guarantee, the accuracy or correctness of any interpretations, and we shall not, except in the case of gross or vital negligence on our part, be liable for any damages, including consequential damages, suffered by any of our officers, agents or employees. These interpretations are also subject to Clause 4 of our General Terms and Conditions as set out in our current Price Schedule.

CLIENT = ESSO AUSTRALIA LTD.

FIELD = WILDCAT

WELL = HARLEQUIN 1

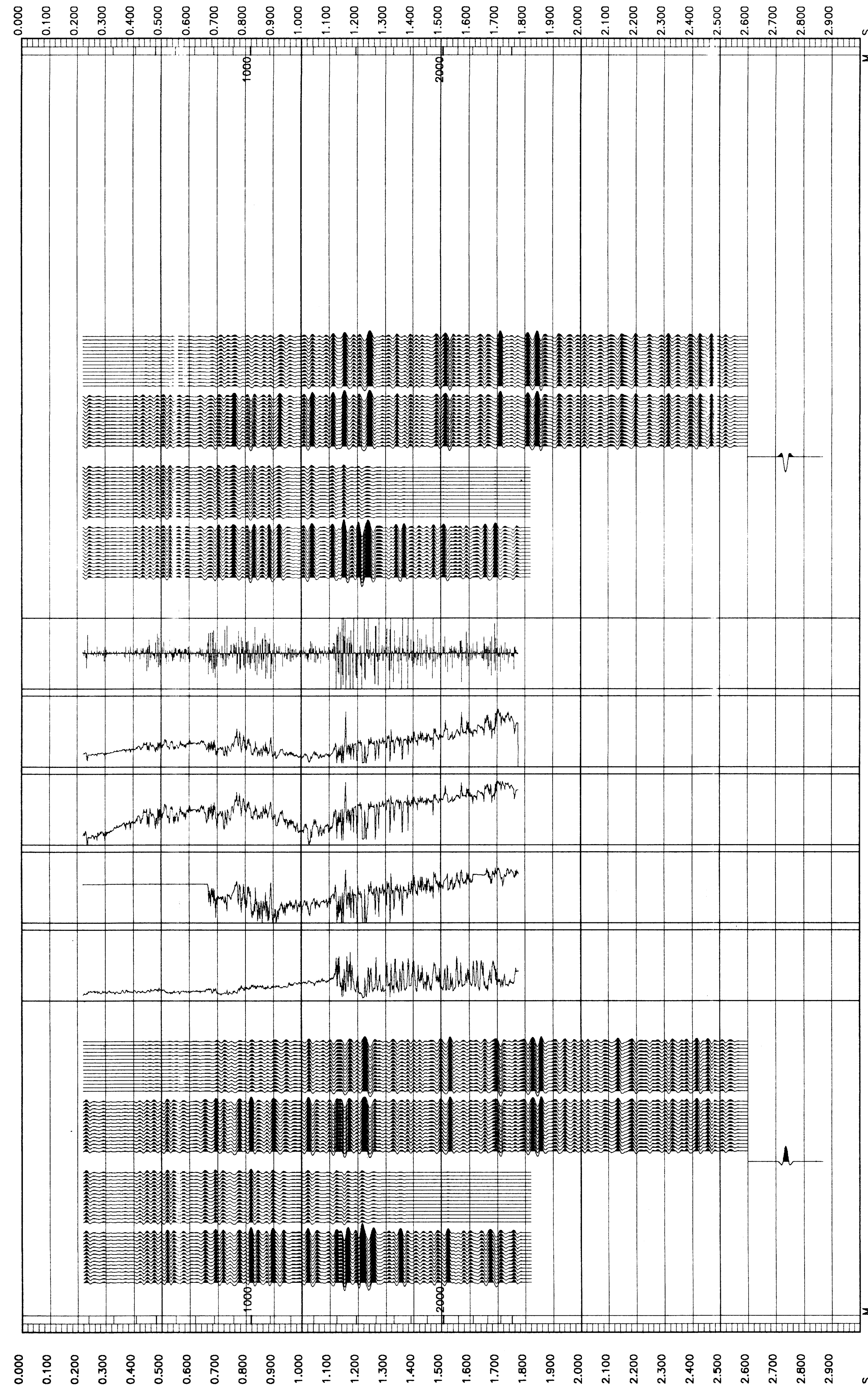
** GEOGRAM **

25 HERTZ ZERO PHASE
RICKER WAVELET

HARLEQUIN 1

MULTIPLES ONLY REVERSE POLARITY
PRIMARIES AND MULTIPLES REVERSE POLARITY
PRIMARIES WITH TRANSMISSION LOSS REVERSE POLARITY
PRIMARIES REVERSE POLARITY
REFLECTION
ACOUSTIC IMPEDANCE
SONIC
DENSITY
GAMMA RAY
MULTIPLES ONLY NORMAL POLARITY
PRIMARIES AND MULTIPLES NORMAL POLARITY
PRIMARIES WITH TRANSMISSION LOSS NORMAL POLARITY
PRIMARIES NORMAL POLARITY

0.200
-0.200
50000.000 FS/GC
10000.000 FS/GC
50.000 US/F
150.000 US/F
2.800 G/C3
1.800 G/C3
200.000 GAPI
0.000 GAPI



COMPANY ESSO AUSTRALIA LTD.
FIELD WILDCAT
WELL HARLEQUIN #1
COUNTRY AUSTRALIA

