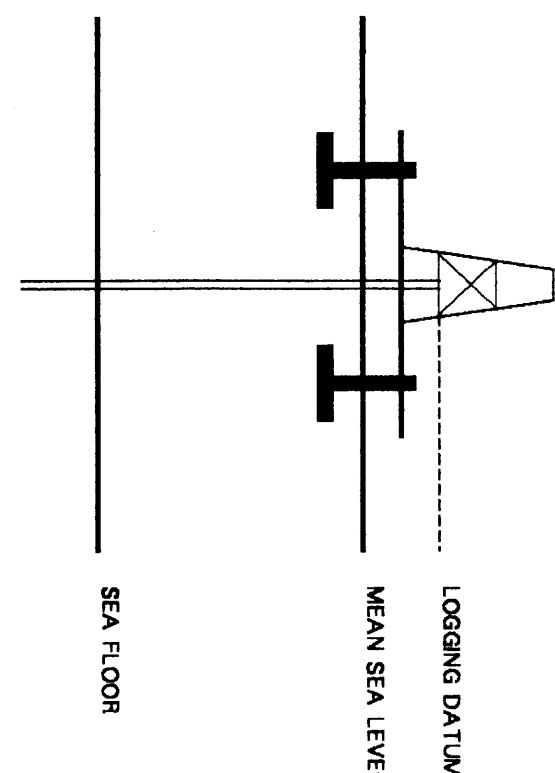


SEISMIC CALIBRATION LOG

(Adjusted Continuous Velocity Log)



Company: ESSO AUSTRALIA LTD.
Well: HARLEQUIN #1
Field: WILDCAT
Country: AUSTRALIA
Reference No: 569304 Interval: 000 to 2574.00
Date Logged: 1 FEB 89 Date Processed: 10 FEB 89
Location: 038 N 8994 S 147 42 28.06 E
Elevations: KB: 2100 DF: 20.70 GL: -43.00
Permanent Datum: MSL Depth Units: METRES
FIELD RECORDS: Engineer: Y. G. ZHANG Location: Program Version: 30.4
COMPUTATION: Analyst: N. SMITH Centre: SVJ Baseline: 18.800X2
ELEVATION ABOVE MEAN SEA LEVEL
Logging Datum: 2100
Seismic Reference Datum: 000



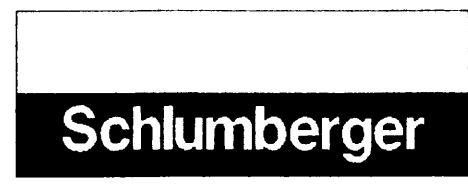
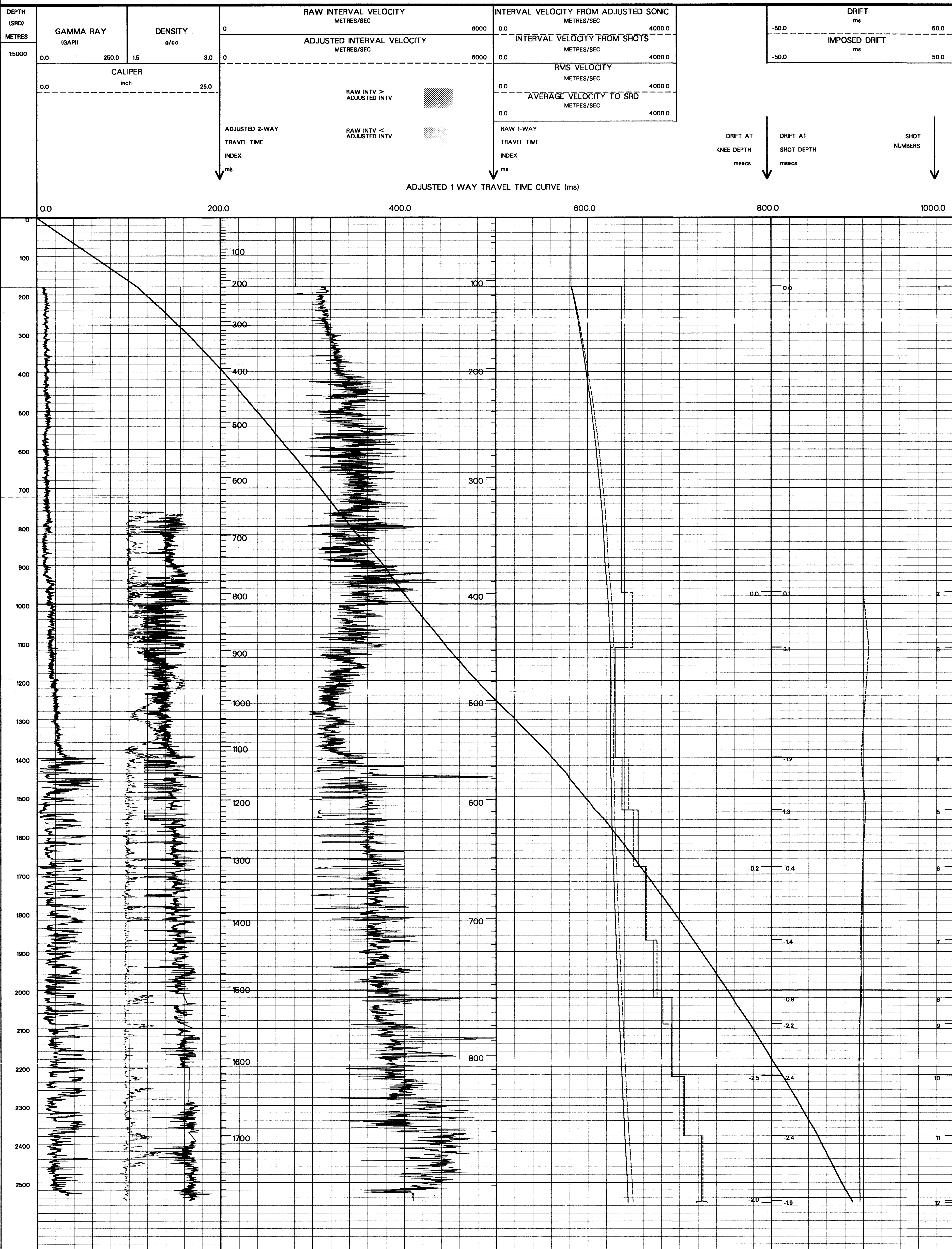
Total Number of Levels: 13
Depth Reference: SRD
Time Reference: SRD

Run	Date	Tool Type	Bit Size/Depth	Casing Size/Depth	Top Depth	Bottom Depth
1	1 FEB 89	BHC			2000 M	7930 M
2	1 FEB 89	BHC	12 1/4" @ 2574.5 M	13 3/8" @ 780 M	7440	2546.5
1	1 FEB 89	40 M	40 M	-9.1 M BELOW GL		

FOLD HERE

The well name, location and borehole reference data were furnished by the customer.

All interpretations are opinions based on inferences from electrical or other measurements and we cannot, and do not guarantee the accuracy or correctness of any interpretations, and we shall not, except in the case of gross or willful negligence on our part, be liable or responsible for any loss, costs, damages or expenses incurred or sustained by anyone resulting from any interpretations made by any of our officers, agents or employees. These interpretations are also subject to Clause 4 of our General Terms and Conditions as set out in our current Price Schedule.



COMPANY ESSO AUSTRALIA LTD.
FIELD WILDCAT
WELL HARLEQUIN #1
COUNTRY AUSTRALIA