

# VERTICAL SEISMIC PROFILE

**ZERO OFFSET VSP**  
**VSP AND GEOGRAM COMPOSITE**

NON-NORMAL POLARITY  
**PLOT 6**

Company: ESSO AUSTRALIA LTD.  
 Well: HALIBUT #2

Field: HALIBUT  
 Country: AUSTRALIA

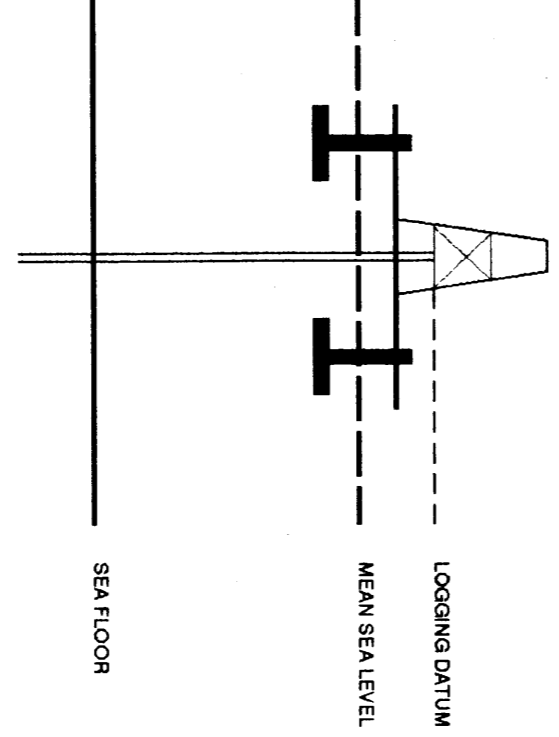
Reference No: SVI 569996 Interval: 2580.00 to 2800.00

Date Logged: 05-MAR-1984 Date Processed: 11-MAR-1984

Location: 008 29 45.42' S 148 18 47.79' E  
 Elevation: 481 25.00 DF: 24.70 GD: -79.00

Parameter Default: EARTHQUAKE  
 Parameter Description: VSP Program Name: 503423  
 Parameter Units: METERS  
 Parameter Range: 500-425  
 Comment: 1.1

Logging Datum: 25.00  
 Logging Datum: 0.00  
 Seismic Reference Datum: 0.00



Depth Reference: 29  
 SBD

Time Reference	Depth Reference	SBID
1	0.00000	1475.00
1	0.00000	1475.00

Time Reference	Depth Reference	SBID
1	0.00000	1475.00
1	0.00000	1475.00

**WAVESHAPING WITH -90 DEG. PHASE ROTATION**  
 WAVESHAPING DECONVOLUTION  
 ZERO PHASE (5-65 HZ)  
 ENHANCED UPDIP WAVESHAPING  
 VERTICAL SCALE : 40 CM/SEC  
 POLARITY (SEED) : NORMAL

**CORRIDOR STACK**

**CORRIDOR STACK + AGC**  
 400 MS AGC WINDOW

**GEOGRAM 36 HZ ZERO PHASE**  
 -90 DEG. PHASE ROTATION - NORMAL POLARITY

**GEOGRAM 28 HZ ZERO PHASE**  
 -90 DEG. PHASE ROTATION - NORMAL POLARITY

**GEOGRAM 45 HZ ZERO PHASE**  
 -90 DEG. PHASE ROTATION - NORMAL POLARITY

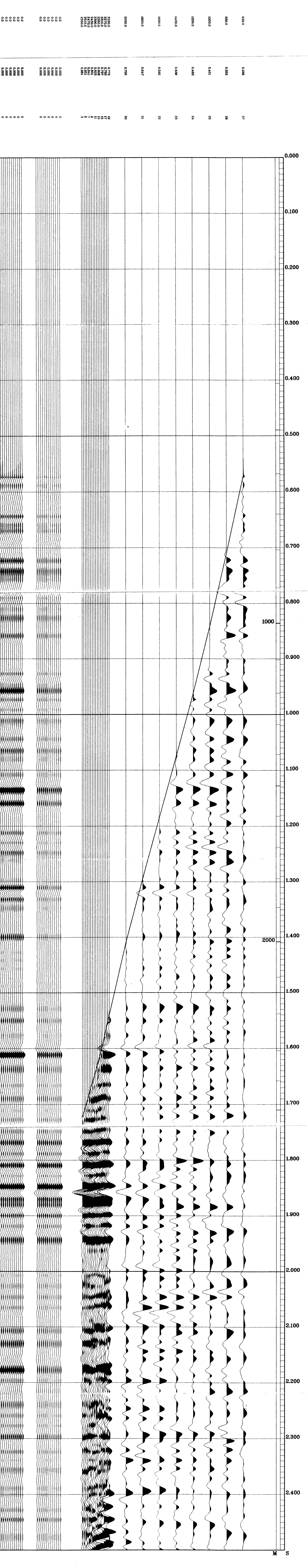
**INVERTED IMPEDANCE**

**LOGGED IMPEDANCE**

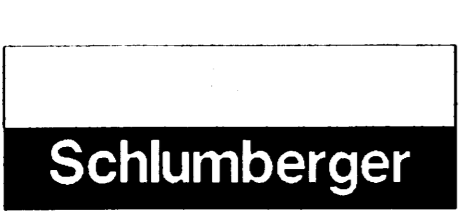
**SONIC**

**DENSITY**

**GAMMA RAY**



COMPANY ESSO AUSTRALIA LTD.  
 FIELD HALIBUT  
 WELL HALIBUT #2  
 COUNTRY AUSTRALIA



FOLD HERE

All interpretations are opinions based on inferences from electrical or other measurements and we cannot, and do not guarantee the accuracy or correctness of any interpretations, and we shall not, except in the case of gross or willful negligence on our part, be liable or responsible for any loss, costs, damages or expenses incurred or sustained by anyone resulting from any interpretations made by any of our officers, agents or employees. These interpretations are also subject to Change of our General Terms and Conditions as set out in our contract. These interpretations are also subject to Change of our General Terms and Conditions as set out in our contract. These interpretations are also subject to Change of our General Terms and Conditions as set out in our contract.