

HYDROCARBON ANALYSIS

DRILLING MUD CHROMATOGRAPHIC Methane — 1 — Butane — 4 — Ethane — 2 — Pentane — 5 — Propane — 3 — Hexane — 6+ —		OIL SHOW HOT WIRE CO ₂ Drilling Mud Gas H ₂ S Drill Cuttings Gas
Calibration: 1% Methane = 74 UNITS 1% Ethane = 92 UNITS 1% Propane = 86 UNITS 1% Butane = 58 UNITS		Calibration: 1% Methane = 20 UNITS

29 AUG 67
 REMARKS
 FORMATION DESCRIPTION,
 MUD DATA,
 DRILL STEM TESTS, etc.
 9100-10000

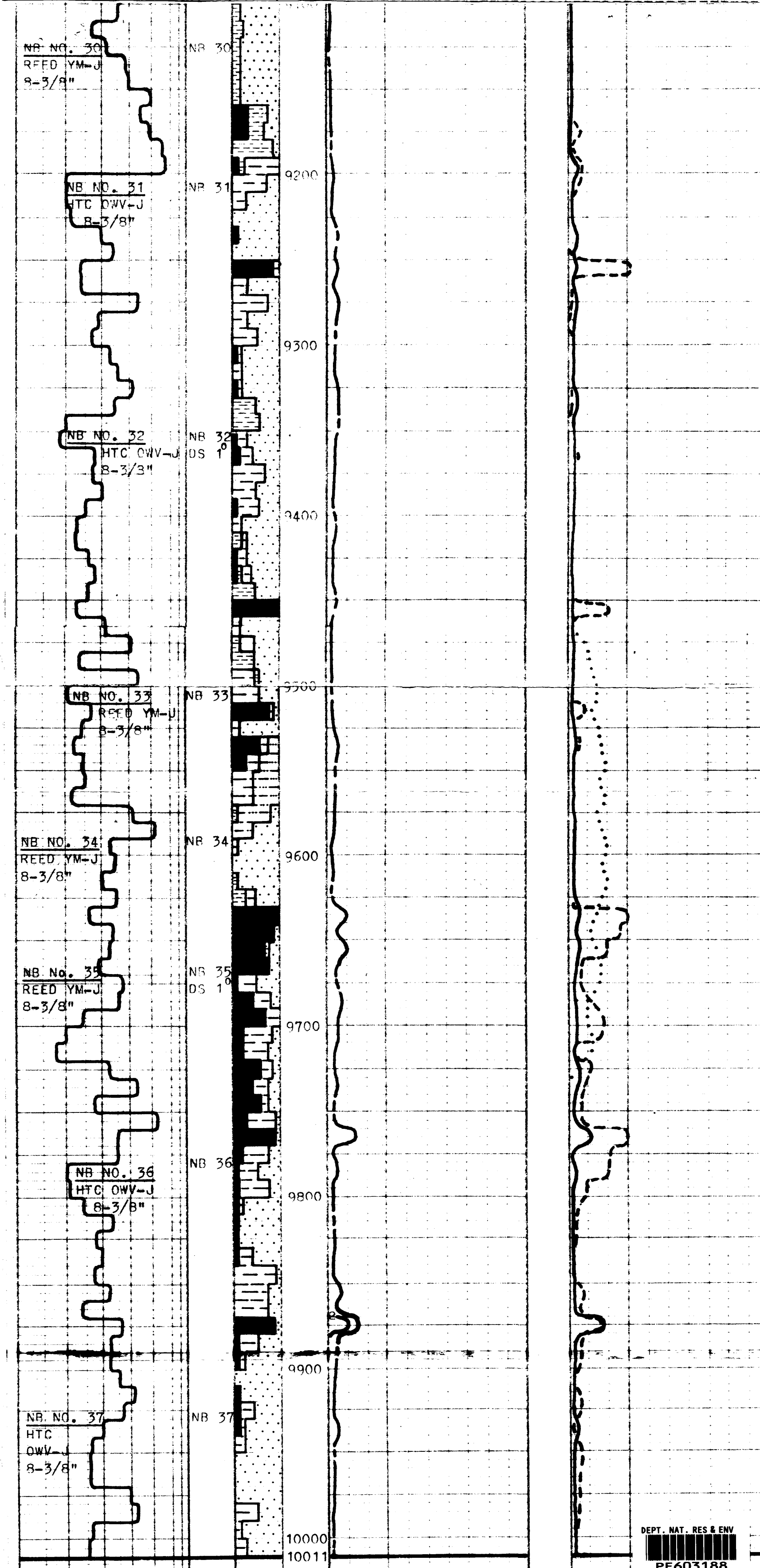
CORE LABORATORIES, INC.

COMPANY

DRILLING RATE MIN/FT <input checked="" type="checkbox"/> FT/HR <input type="checkbox"/> 2 4 6 8 10	DRILLING LITHOLOGY DEPTH
---	--------------------------------

Calibration: 1% Methane = 74 UNITS 1% Ethane = 92 UNITS 1% Propane = 86 UNITS 1% Butane = 58 UNITS	Calibration: 1% Methane = 20 UNITS
--	---------------------------------------

REMARKS
 FORMATION DESCRIPTION,
 MUD DATA,
 DRILL STEM TESTS, etc.



SOFT, SPONGY, PY.
 NOTE: WHITE CLAY IS SUSPECTED TO BE A VARIETY OF VOLCANIC ASH.

MUD DATA

DEPTH = 9354	APV = 27
W = 11.4	PV = 25
V = 43	YD = 4
WL = 4.5	1/G = 1
CK = 1	PH = 9.5
PH = 9.5	10/G = 3
CA = 182	NACL = 4340
ALK = 0.5	SD = .75%
RMF = 0.76/74 °F.	SOLIDS = 18%

9190' - 9530'
 SAND, SHALE, CLAY,
 COAL: SAND IS WH TO BUFF, V FN GRN TO V CSE GRN, RND TO SUBANG, UNCONSOL TO POORLY PONDED W/WH CLAY, STREAKY SORTING, S/FROSTED, CARB MATTER, INCLU IN GRNS, PY, MICA. SHALE IS YEL BRN, SOFT, SILTY, CARB, PY, MICA, COAL INCLUSIONS. CLAY IS WH TO LT GY, SOFT, SPONGY FEEL, INCLUSIONS. COAL IS BLK TO DK BRN, BITUMINOUS, SILTY, PY, RARE SUB-CONCHOIDAL FRACTURE.

9530' - 9570'
 SILTSTONE, LT BRN TO BUFF, CARB, MICAC, SCATTERED V FN QTZ GRNS, S/PYRITIC, INTERBEDDED SHALE AND COAL.

9570' - 9630'
 SANDSTONE, WH TO BUFF, CLR MED TO CSE GRNS, ANG TO SUBRND, MOD HD, FAIR SORTING, DOLOMITIC CMT, GD MINERAL FLUORESCENCE.

NOTE: ENCOUNTERING LARGE AMOUNTS OF ASPHALTITE AT 9800'

CARBIDE CHECK

DEPTH = 9914'
CARBIDE = 250 GMS
HOT WIRE = 39 UNITS
P.H.D. = 108 UNITS
LAG = 73 MIN/50STKS

9630' - 10011'
 SAND, SHALE, COAL: SAND WH AND CLR, MED TO V CSE GRN, SUBANG, MOD HD, DOLOMITIC CMT, PR SORTING, INCLU IN GRNS, LOC ASPHALTITE ACCUMULATIONS, PY, V CSE PORTION IS UNCONSOLIDATED. SHALE IS P YEL BRN, SOFT, CARB, SILTY, MICRO-MICACEOUS, COAL INCLU AND STKS. COAL IS BLK TO DK BRN, BITUMINOUS, SILTY STKS, PY. TOTAL DEPTH