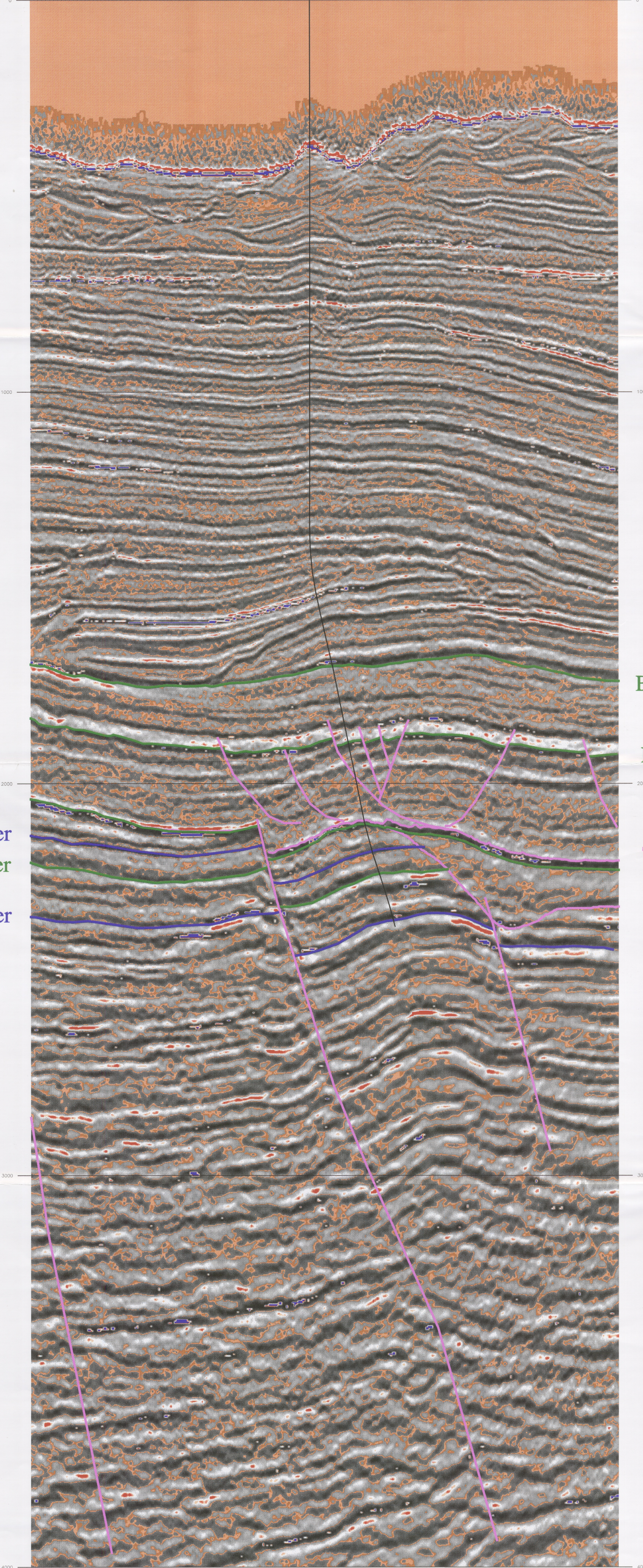


CDP 288 289 292 294 296 298 300 302 304 306 308 310 312 314 316 318 320 322 324 326 328 330 332 334 336 338 340 342 344 346 348 350 352 354 356 358 360 362 364 366 368 370 372 374 376 378 380 382 384 386 388 390 392 394 396 398 400



GUDGEON 1 CROSSLINE 1366

Company: ESSO AUSTRALIA RESOURCES LTD
 Created: 23-Oct-95 18:14:28
 Prepared by: C. JENKINS
 IES User: C. JENKINS
 IES Project: SMCHAN
 Survey: SMCHAN
 Number of panels: 1
 IES Plotting Release Date: 02/16/94

Schlumberger
GeoQuest

Panel Number: 1

Line: Cross-Line CDP=1366 SMCHAN
 Line Type: Cross-Line
 Trace: 1-300
 Object ID: SMC-1366X
 Version: 99-398
 99-398

Acquih: 132.8
 Traces/cm: 20.00
 Polarity: Normal
 Centimeters/Second

Declination: 1
 Map Distance Across Panel: 7475.00Meters
 Trace Spacing: 25.00Meters
 Display Scale: 250.00 Meters/cm
 Time Range: 0-4000 Milliseconds
 Scale Mode is Line Scale Value is 150.00

Chrome Seismic Marker
 Terracotta Seismic Marker
 Bronze Seismic Marker

Base High Velocity Channel
 Mid Miocene
 Top Latrobe (Predrill)
 Top Latrobe (Post Drill)
 Base Eocene Channel
 Bronze Seismic Marker
 (Base Cemented Sandstone)



ESSO AUSTRALIA RESOURCES LTD
GIPPSLAND BASIN
 VICTORIA

Esso

Gudgeon-1
 Seismic Crossline 1366

CONTOUR INTERVAL: AUTHOR: C. Jenkins
 ENCLOSURE: 4 DRAWN:
 TO ACCOMPANY: DATE: 23/10/95
 Gudgeon-1 Well Completion Report