

CORE LABORATORIES, INC.

COMPANY: ESSO STANDARD OIL (AUSTRALIA) LTD.
 WELL: GROPER 1
 FIELD: WILD CAT
 COUNTY: VICTORIA
 LOCATION: LAT: 38° 56' 20" S, LONG: 147° 24' 55" E, STATE: AUSTRALIA, ELEVATION: 31' KB

DEPTH LOGGED FROM: 1570' TO: 3379'
 DATE LOGGED: MIDDLETON
 FILE NO: FL-115-18L
 DRILL CHIEF: _____
 DRILL FLUID: _____

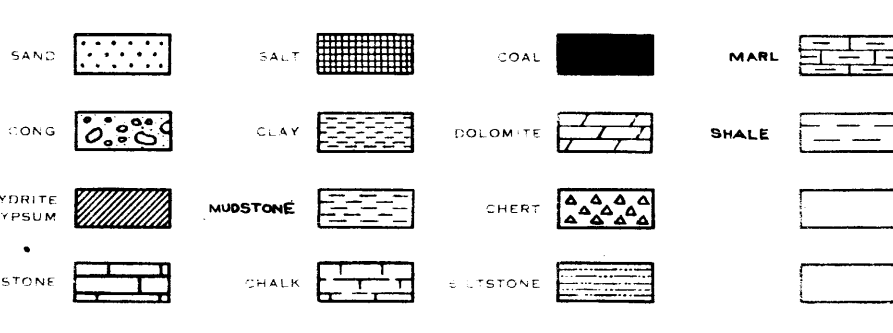


LEGEND

ABBREVIATIONS
 NB = NEW BIT
 NCB = NEW CORE BIT
 CO = CIRCULATED OUT
 DST = DRILL STEM TEST
 LAT = LOGGED AFTER TRIP
 TG = TRIP GAS
 NR = NO RETURNS
 DS = DIRECTIONAL SURVEY
 DC = DEPTH CORRECTION
 DEPTHS CORRESPOND TO DRILL PIPE MEASUREMENTS
 MEASURED FROM
 KELLY BUSHING

RESISTIVITY, OHM-METERS
 Rm = MUD
 Rmc = MUD CAKE
 Rmf = MUD FILTRATE
 MUD DATA
 CK = CAKE THICKNESS 32nds
 V = VISCOSITY API SECONDS
 F = FILTRATE API CC'S
 W = WEIGHT (LBS/US GAL)
 S = SALINITY, ppm Cl NaCl

LITHOLOGY



DRILLING RATE
 MIN/FT
 FT/HR

DEPTH
 LITHOLOGY

HYDROCARBON ANALYSIS

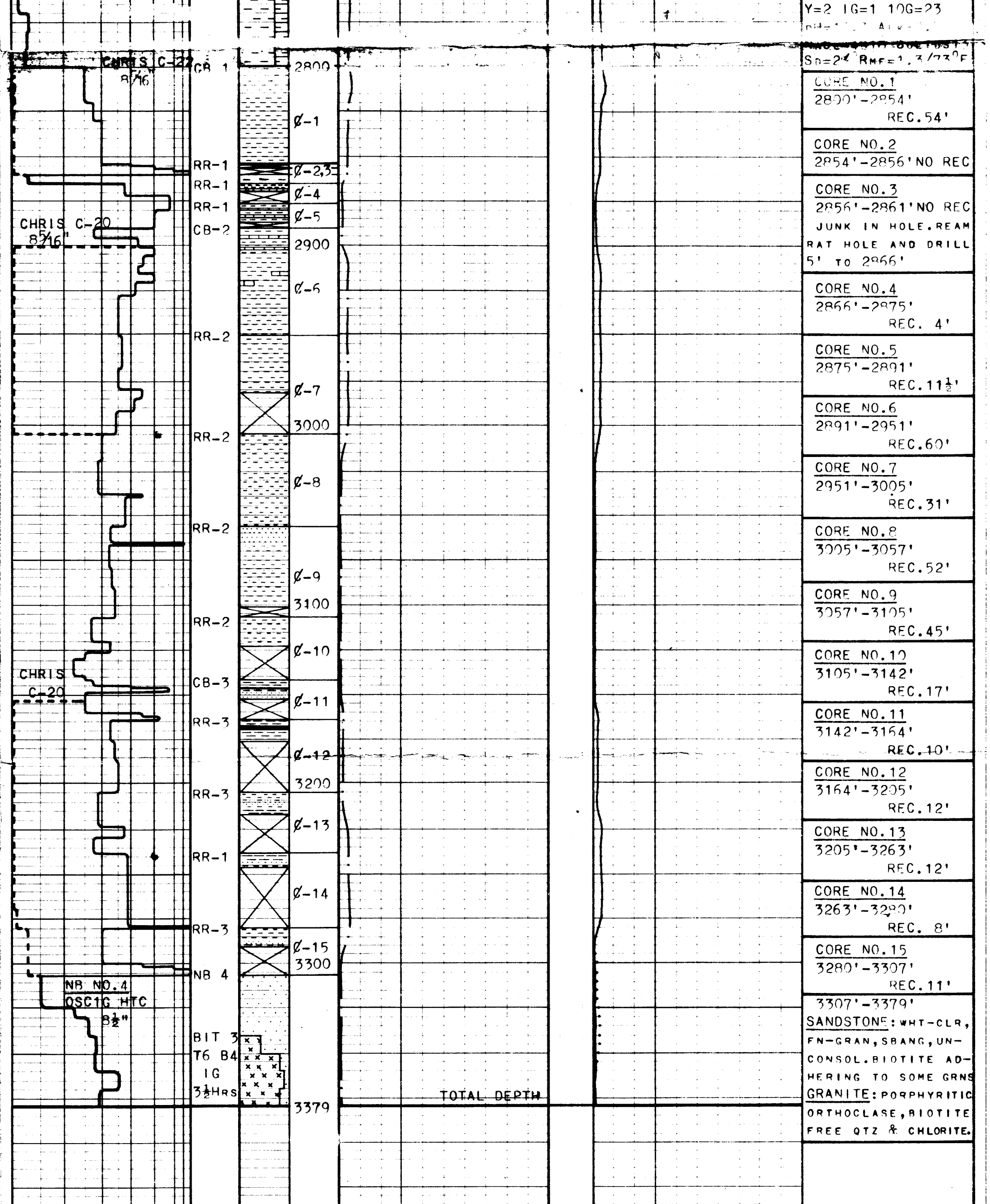
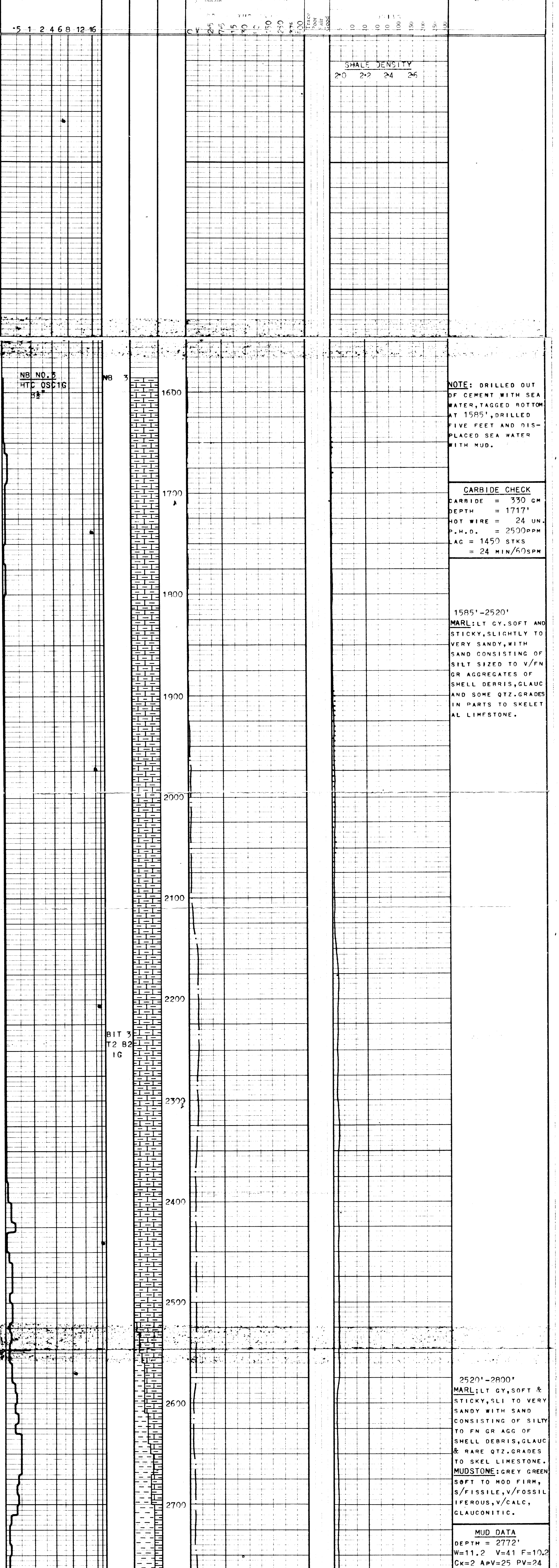
CHROMATOGRAPHIC
 Methane — Butane — 4 —
 Ethane — 2 — Pentane — 5 —
 Propane — 3 — Hexane — 6 —
 Calibration
 Methane = 4900 PPM
 Ethane = 5000 PPM
 Propane = 4970 PPM
 Butane = 2900 PPM

HOT WIRE

CO₂
 Drilling Mud Gas
 H₂S
 Drill Cuttings Gas
 Calibration

REMARKS
 FORMATION DESCRIPTION,
 MUD DATA,
 DRILL STEM TESTS, etc.

VERTICAL SCALE
 2" = 100'



NOTE: DRILLED OUT OF CEMENT WITH SEA WATER, TAGGED BOTTOM AT 1585', DRILLED FIVE FEET AND DISPLACED SEA WATER WITH MUD.

CARBIDE CHECK
 CARBIDE = 330 GM
 DEPTH = 1717'
 HOT WIRE = 24 UN.
 P.H.D. = 2500PPM
 IAG = 1450 STKS
 = 24 MIN/60SPM

1585'-2520'
 MARL: LT GY, SOFT AND STICKY, SLIGHTLY TO VERY SANDY, WITH SAND CONSISTING OF SILT SIZED TO V/FN GR AGGREGATES OF SHELL DEBRIS, GLAUC AND SOME QTZ. GRADES IN PARTS TO SKELETAL LIMESTONE.

2520'-2800'
 MARL: LT GY, SOFT & STICKY, SLI TO VERY SANDY WITH SAND CONSISTING OF SILTY TO FN GR AGG OF SHELL DEBRIS, GLAUC & RARE QTZ. GRADES TO SKEL LIMESTONE.
 MUDSTONE: GREY GREEN SOFT TO MOD FIRM, S/FISSILE, V/FOSSILIFEROUS, V/CALC, GLAUCONITIC.

MUD DATA
 DEPTH = 2772'
 W=11.2 V=41 F=10.2
 CK=2 APV=25 PV=24
 Y=2 IG=1 10G=23
 S_n=24 R_{mf}=1.7/73°F

- CORE NO. 1
2800'-2854'
REC. 54'
- CORE NO. 2
2854'-2856' NO REC
- CORE NO. 3
2856'-2861' NO REC
JUNK IN HOLE, GRAES RAT HOLE AND DRILL 5' TO 2866'
- CORE NO. 4
2866'-2875'
REC. 4'
- CORE NO. 5
2875'-2891'
REC. 11 1/2'
- CORE NO. 6
2891'-2891'
REC. 60'
- CORE NO. 7
2951'-3005'
REC. 31'
- CORE NO. 8
3005'-3057'
REC. 52'
- CORE NO. 9
3057'-3105'
REC. 45'
- CORE NO. 10
3105'-3142'
REC. 17'
- CORE NO. 11
3142'-3164'
REC. 10'
- CORE NO. 12
3164'-3205'
REC. 12'
- CORE NO. 13
3205'-3263'
REC. 12'
- CORE NO. 14
3263'-3290'
REC. 8'
- CORE NO. 15
3290'-3307'
REC. 11'
- 3307'-3379'
SANDSTONE: WHT-CLR, FN-GRAN, SBANG, UN-CONSOL. BIOTITE ADHERING TO SOME GRNS
GRANITE: PORPHYRITIC ORTHOCLASE, BIOTITE FREE QTZ & CHLORITE.