



WELL COMPANY FLOUNDER NO. 4  
 COUNTY GIPPSLAND BASIN  
 STATE VICTORIA  
 ESO AUSTRALIA LTD.

**LEGEND**  
 DEPTH CORRESPONDS TO DRILL  
 PIPE MEASUREMENTS.  
 NB NEW BIT  
 NCB NEW CORE BIT  
 OST DRILL STEM TEST  
 NR NO RETURNS  
 TG TRIP GAS  
 CO CIRCULATE OUT RETURNS

**LITHOLOGY**

SAND	GRANITE WASH	LIME STONE	CHERT
SHALE	GYP ANHYDRITE	DOLOMITE	LIGNITE

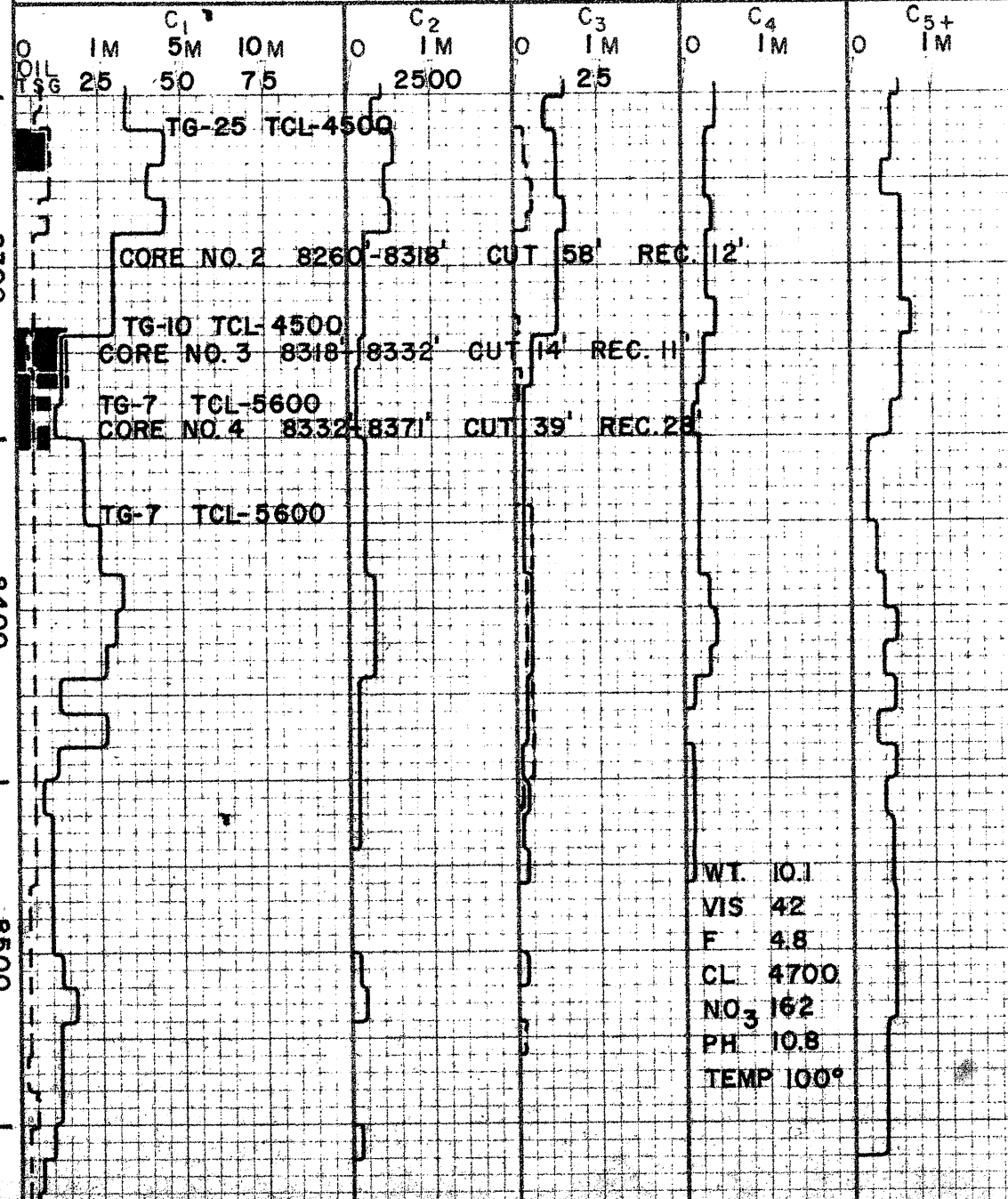
**CUTTINGS ANALYSIS**

TOTAL GAS \_\_\_\_\_  
 METHANE \_\_\_\_\_  
 LIQUID HYDROCARBONS (C<sub>6</sub>+ ) \_\_\_\_\_ 6+ \_\_\_\_\_  
 25 50 75

**DRILLING RATE**  
 FT. PER HR  MIN. PER FT.  
 75 50 25  
 VISUAL POR. SITY  
 G & T

**LITHOLOGY**

ppm HYDROCARBONS IN MUD M=1000



19-1-73  
 NCB-2, C20  
 4.1 HRS.

20-1-73  
 NCB-3, C22  
 1.7 HRS.  
 21-1-73  
 NCB-4, C22  
 11.1 HRS.

RR NO. 10, J33  
 16 HRS.

22-1-73

CORE NO. 2=SD, CLR, M-C GR, OCC PEB, SA-SR, SL, CALC, FRIA-CONS W/DOL CMT, GD FLOR W/GD CUT, GD VIS 0-K

CORE NO. 3=SD, A/A, V FRIA-UNCONS, GD YEL FLOR W/GD BL-WH CUT

CORE NO. 4=SD, WH-BRN, M-C GR, GTZ, FRIA-V HD W/DOL CMT, GD YEL FLOR-W/GD BL-WH CUT, P-G VIS 0, 0/W CONTACT AT 8353

WT. 10.1  
 VIS 42  
 F 4.8  
 CL 4700  
 NO<sub>3</sub> 162  
 PH 10.8  
 TEMP 100°

SH-LT-M GY-LT BRN, SL FISS, SLTY IN PT, PYR, TR COAL

SD-CLR, WH, SR, F-VO GR, UNCONS W/DOL CMT, WK MIN FLOR, NOSFC

DEPT. NAT. RES. & ENV  
 PE603263