



WELL **FLOUNDER NO. 4**  
 COMPANY **ESSO AUSTRALIA LTD.**  
 COUNTY **GIPPSLAND BASIN**  
 STATE **VICTORIA**

875'-8605'

**LEGEND**  
 DEPTH CORRESPONDS TO DRILL  
 PIPE MEASUREMENTS.  
 NB NEW BIT  
 NCB NEW CORE BIT  
 DST DRILL STEM TEST  
 NR NO RETURNS  
 TG TRIP GAS  
 CO CIRCULATE OUT RETURNS

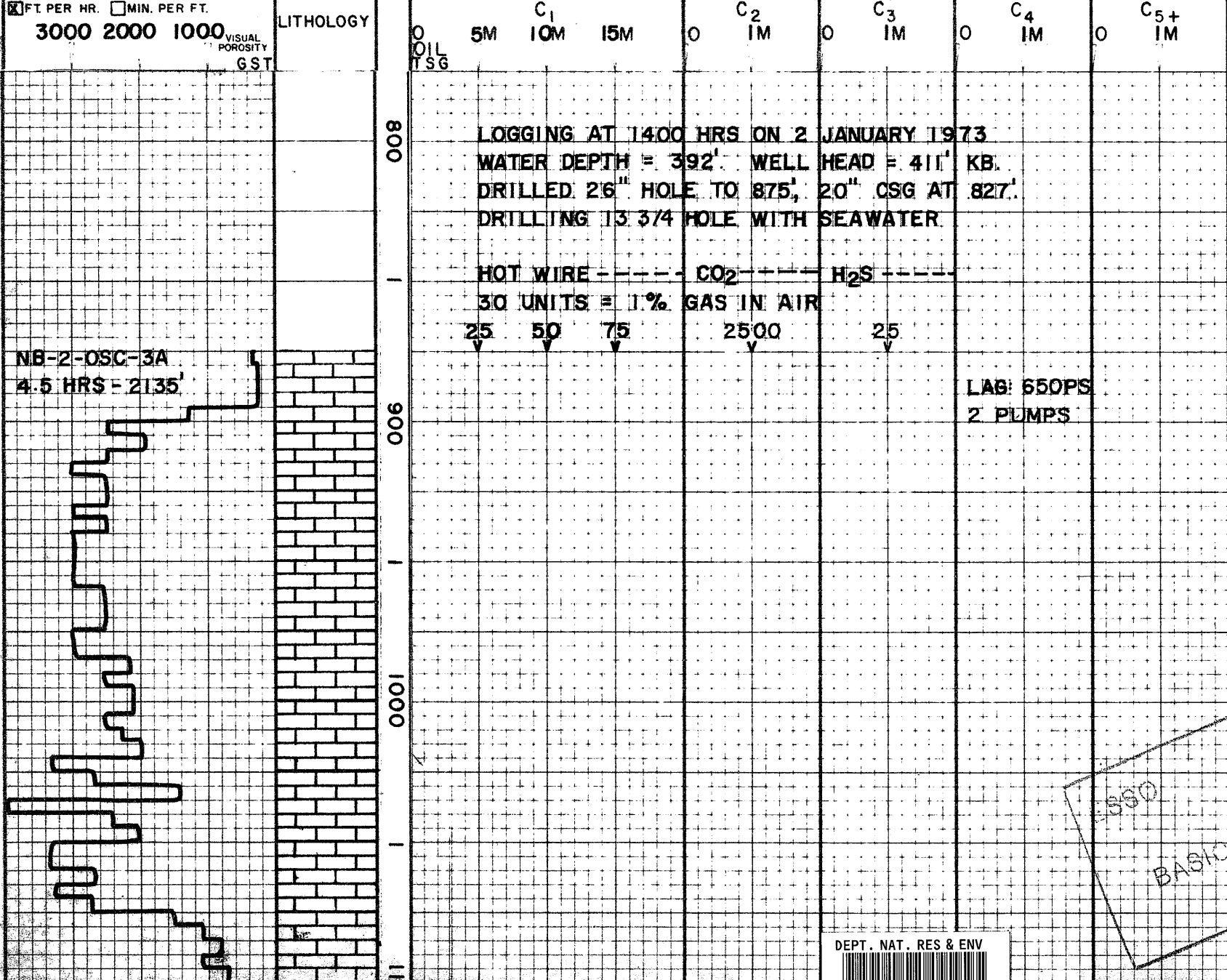
**LITHOLOGY**  
 SAND GRANITE WASH LIMESTONE   
 SHALE GYP ANHYDRITE DOLOMITE

1 of 25  
 CHERT   
 LIGNITE

**CUTTINGS ANALYSIS**  
 TOTAL GAS \_\_\_\_\_  
 METHANE \_\_\_\_\_  
 LIQUID HYDROCARBONS  
 (C<sub>6+</sub>) \_\_\_\_\_ 6+ \_\_\_\_\_

**DRILLING RATE**  
 FT. PER HR.  MIN. PER FT.  
 3000 2000 1000  
 VISUAL POROSITY  
 GST

**ppm HYDROCARBONS IN MUD M=1000**



OIL TSG  
 25 50 75  
 OIL TSG

30' SAMPLES  
 LS: BUFF-LT GY  
 FOSS. ABNT  
 SHELL FRAGS  
 CORAL

ESSO  
 BASIC DATA  
 SAMPLES HEAVILY  
 CMT CONTAMINATED

DEPT. NAT. RES & ENV  
  
 PE603240