

# COMPLETION LOG

WELL EDINA No 1 (EDN 1)  
 PERMIT VIC P17 82/971

COORDINATES  
 38° 36' 22" 32" S  
 147° 52' 42" 183" E

CONTRACTOR  
 ODECO

RIG OCEAN DIGGER  
 TOTAL POWER 5400  
 WINCH EMSCO A 1500 E

MUD PUMPS  
 2xEMSCO D1350  
 AIR DRILLING COMPRESSOR

S  
Y  
M  
B  
O  
L

▲ Tight hole  
 × Bridging, without re-drilling  
 ⊗ Redrilling  
 ⊗ Drill string stuck

● Partial loss  
 ● Total loss  
 ○ Under-reaming  
 ⊗ Reaming  
 ○ Coring

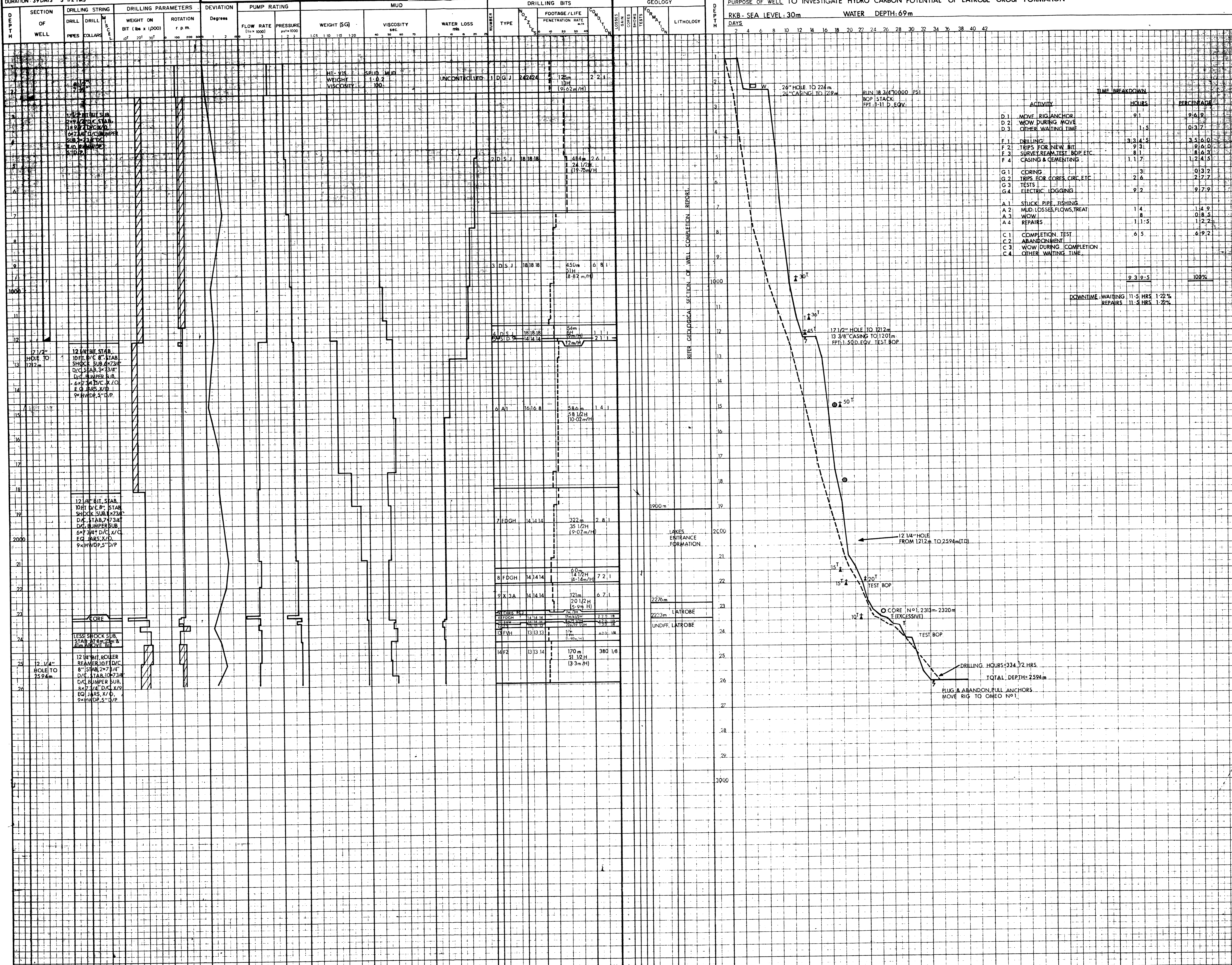
■ Plug of LCM  
 ■ Plug of gel-cement  
 ■ Plug of cement  
 □ Test  
 □ Fishing job

○ Special tools  
 ⊗ Logging  
 ⊗ Mud: conditioning  
 ⊗ -degassing  
 ⊗ Torque during drilling

SHOWS  
 ⊗ Gas  
 ⊗ Oil  
 ⊗ Fresh water  
 ⊗ Salt water

TOOLS WEAR  
 Teeth: in 1/8"  
 ⌀ 1 = in gauge  
 ⌀ 2 = wear in 1/8"  
 Inserts: no. lost or bkn.

SPUD-IN DATE: 26 SEPT. 1982  
 DURATION: 39 DAYS 3 1/2 HRS  
 ABANDON: 1 NOV 1982



REFER GEOLOGICAL SECTION OF WELL COMPLETION REPORT.

LAKES ENTRANCE FORMATION  
 1900m  
 2226m LATROBE  
 UNDEF. LATROBE

TIME BREAKDOWN		
ACTIVITY	HOURS	PERCENTAGE
D 1 MOVE RIG/ANCHOR	9.1	9.6%
D 2 WOW DURING MOVE		
D 3 OTHER WAITING TIME	1.5	0.3%
F 1 DRILLING	33.4.5	35.6%
F 2 TRIPS FOR NEW BIT	9.3	9.6%
F 3 SURVEY, REAM, TEST BOP, ETC	8.1	8.6%
F 4 CASING & CEMENTING	1.1.7	1.2%
G 1 CORING	3	0.3%
G 2 TRIPS FOR CORES, CIRC, ETC	2.6	2.7%
G 3 TESTS		
G 4 ELECTRIC LOGGING	9.2	9.7%
A 1 STUCK PIPE, FISHING		
A 2 MUD LOSSES, FLOWS, TREAT	1.4	1.4%
A 3 WOW	8	8.5%
A 4 REPAIRS	1.1.5	1.2%
C 1 COMPLETION TEST	6.5	6.9%
C 2 ABANDONMENT		
C 3 WOW DURING COMPLETION		
C 4 OTHER WAITING TIME		
<b>DOWNTIME WAITING</b>		<b>11.5 HRS 1.22%</b>
<b>REPAIRS</b>		<b>11.5 HRS 1.22%</b>
		<b>93.9.5</b>
		<b>100%</b>

DRILLING HOURS: 334 1/2 HRS  
 TOTAL DEPTH: 2594m  
 PLUG & ABANDON. PULL ANCHORS.  
 MOVE RIG TO OMEO No 1.