



ELAN+

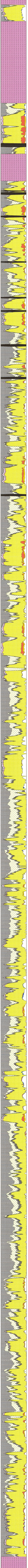
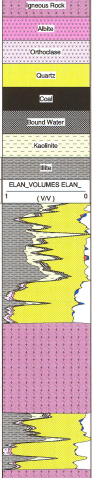
Petrophysical Interpretation

COMPANY: ESSO AUSTRALIA Pty LTD
WELL: EAST PILCHARD 1

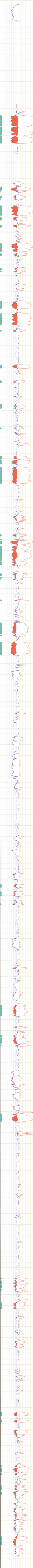
RIG: WILDCAT
FIELD: OCEAN BOUNTY
STATE: VICTORIA
COUNTRY: AUSTRALIA

DATE LOGGED: 2-Aug-2001
DATE PROCESSED:

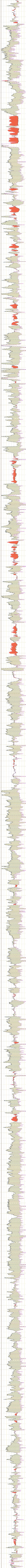
WELL LOCATION: GIPPSLAND BASIN - BASS STRAIT
Longitude: 148 37' 42.82" E
Elevation: RTI 25.00 m
DIP: 38.11 54.19" S
ANALYST: Kumar Kumar



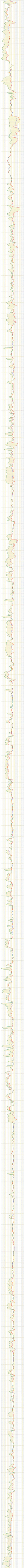
Bulk Vol Goe	0.5 (m3/m3)	0
Gas		
PHI7_Elan	0.5 (m3/m3)	0
Water		
PHE_Elan	0.5 (m3/m3)	0
MSCT Core Pw	0.5 (m3/m3)	0
RAY FLAG	()	10
Net Gas Pay		1 (m3/m3)



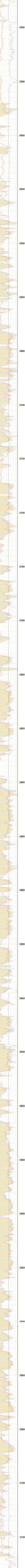
Shale Effect		
Gas Effect		
LNPO	0.45 (m3/m3)	-0.15
RHOg	(g/cm3)	2.65



HLS	2000	
HLLD	2000	
RHOZ	2000	



VOL CLAY	1	
WGR	200	
Caliper	(in)	16



Enclosure 2