



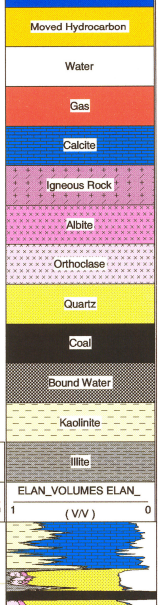
ELAN+

Petrophysical Interpretation



COMPANY: ESSO AUSTRALIA Pty LTD
 WELL: EAST PILCHARD 1
 FIELD: WILD CAT
 RIG: OCEAN BOUNTY
 STATE: VICTORIA
 COUNTRY: AUSTRALIA

Date Logged: 2-Aug-2001 Date Processed:
 Well Location: GIPPSLAND BASIN - BASS STRAIT
 Longitude: 148 33' 42.825" E Latitude: 38 11' 54.184" S
 Elevations: RT: 25.00 m DF: GL:
 Analyst: Kumar Kulkarni

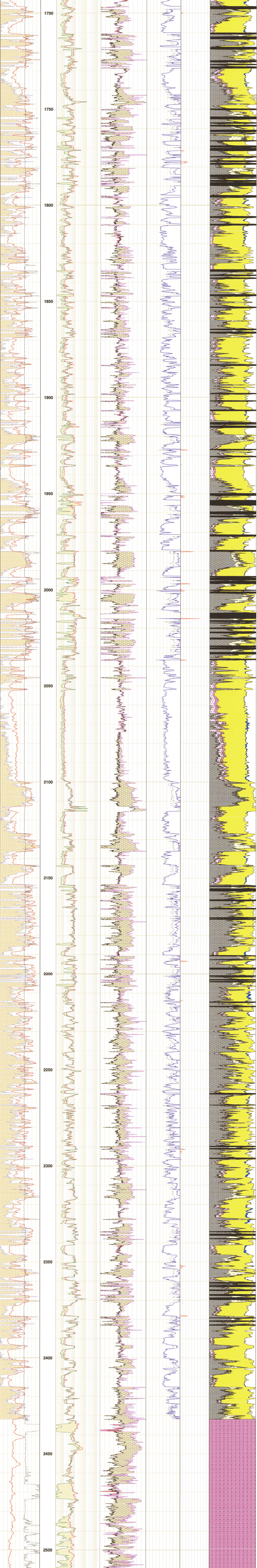


Bulk Vol Swe	0.5 (m ³ /m ³)	0
Gas	PHIT_Elan	0.5 (m ³ /m ³)
Water	PHIE_Elan	0.5 (m ³ /m ³)
	MSCT Core Por	0.5 (m ³ /m ³)
	PAY FLAG	0 ()
	Net Gas Pay	1 (m ³ /m ³)

Invasion	HLLS	0.2 (ohm.m)	2000
	HLLD	0.2 (ohm.m)	2000
	RHOZ	1.85 (g/cm ³)	2.85

MD 1:500
 1700
 1750
 1800
 1850
 1900
 1950
 2000
 2050
 2100
 2150
 2200
 2250
 2300
 2350
 2400
 2450
 2500

Vol of Clay	VCL_Elan	0 (m ³ /m ³)	1
	HSGR	0 (gAPI)	200
	Caliper	6 (in)	16



Enclosure 1