

Schlumberger

PERTH COMPUTING CENTRE

VELOCITY PROFILE

DEPT. NAT. RES & ENV
PE6029229

Using the following logs:
CALL, RHOB, DT & GR

Company: ESSO AUSTRALIA LTD.

Well: DRUMMER #1

Field: WILDCAT

Country: AUSTRALIA

Reference No: 540419 Interval: 2568.00 to 240.00

Date Logged: 13-OCT-1985 Date Processed: 12-DEC-1985

Location: 038 28 33.99 S 148 14 58.40 E

Elevations: KB: 21.0 M DF: 20.7 M GL: -74.0 M

Permanent Datum: MSL Depth Units: METRES

OIL and GAS DIVISION

16 JAN 1986

Program Revision 1/1

FOLD HERE The well name, location and borehole reference data were furnished by the customer.

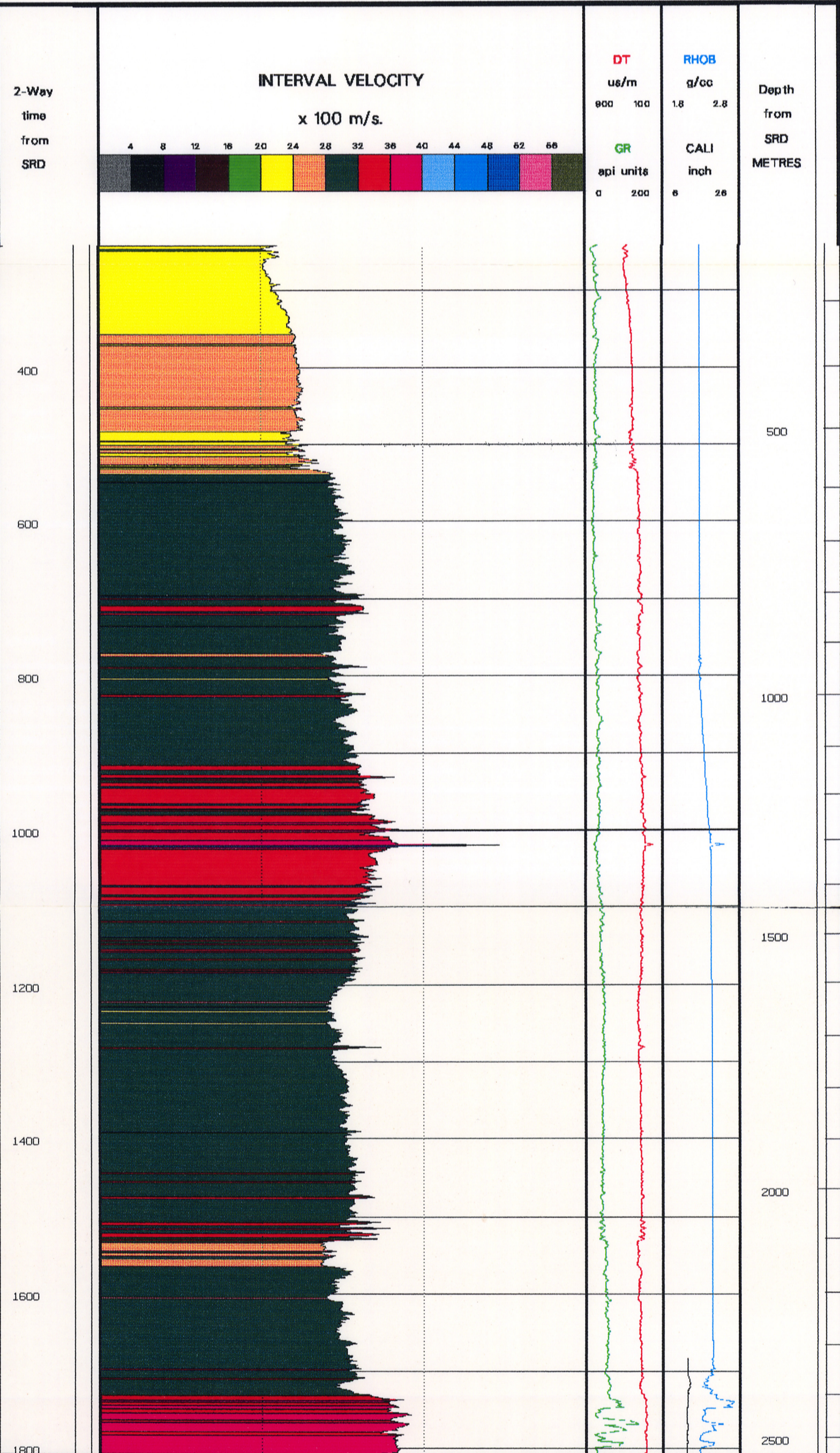
All interpretations are opinions based on inferences from electrical or other measurements and we cannot, and do not guarantee the accuracy or correctness of any interpretations, and we shall not, except in the case of gross or willful negligence on our part, be liable or responsible for any loss, costs, damages or expenses incurred or sustained by anyone resulting from any interpretations made by any of our officers, agents or employees. These interpretations are also subject to Clause 4 of our General Terms and Conditions as set out in our current Price Schedule.

FIELD RECORDING:	Engineer:	D. DAWSON	Location:	VEA	Program Version:	VSP/GEO
COMPUTATION:	Analyst:	M. SANDERS	Centre:	ASJ	Baseline:	4.2

MUD MEASUREMENTS:

R _m =	0.113	R _{mf} =	0.092	BHT =	90.0	Bit Size =	12.25
------------------	-------	-------------------	-------	-------	------	------------	-------

Remarks: VERTICAL TIME SCALE 7.5 IN/SEC



Schlumberger

VELOCITY PROFILE