



Esso Australia Ltd.

SOLAR

The System Of Log Analysis Resources

Release 5.5

User: JTWHTC

Date: Friday, 10 October 1987 9:21:04 a.m.

DOLPHIN A3

WELL ID: 009729
DEPTH RANGE: 1270-1378 metres
SCALE: 200.00 (ratio)

Run: 1
Service: WL.TAPE
curve-CALI label-CALI generic-CALIPER units-INCHES pass=0 generation=1
curve-GR label-GR generic-GAMMA RAY units-GAPI pass=0 generation=1
curve-MSFL label-MSFL generic-RESISTIVITY SHALLOW units-OHMM pass=0 generation=1
curve-LLD label-LLD generic-RESISTIVITY DEEP units-OHMM pass=0 generation=1
curve-LLS label-LLS generic-RESISTIVITY SHALLOW units-OHMM pass=0 generation=1
curve-DRHO label-DRHO generic-DENSITY CORRECTION units-G/CM3 pass=0 generation=1
curve-ENPH label-ENPH generic-NEUTRON POROSITY units-FRAC pass=0 generation=1
curve-EPE label-EPE generic-PHOTOELECTRIC CROSS units-B/CM3 pass=0 generation=1
curve-ERHO label-ERHO generic-BULK DENSITY units-G/CM3 pass=0 generation=1
Run: 99
Service: LOGIC.BVPLT
curve-MTRX label-MTRX generic-BULK VOLUME units-FRAC pass=1 generation=1
curve-BVWG label-BVWG generic-BULK VOLUME units-FRAC pass=1 generation=1
curve-BVWO label-BVWO generic-BULK VOLUME units-FRAC pass=1 generation=1
curve-VDCLAY label-VDCLAY generic-BULK VOLUME units-FRAC pass=1 generation=1
curve-BNDW label-BNDW generic-BULK VOLUME units-FRAC pass=1 generation=1
Service: LOGIC.K12
curve-SWE label-SWE generic-WATER SATURATION units-FRAC pass=1 generation=3
curve-PHIE label-PHIE generic-POROSITY units-FRAC pass=1 generation=3
Service: LOGIC.RWA
curve-SALA label-SALA generic-WATCH SALINITY units-FPM pass=1 generation=2

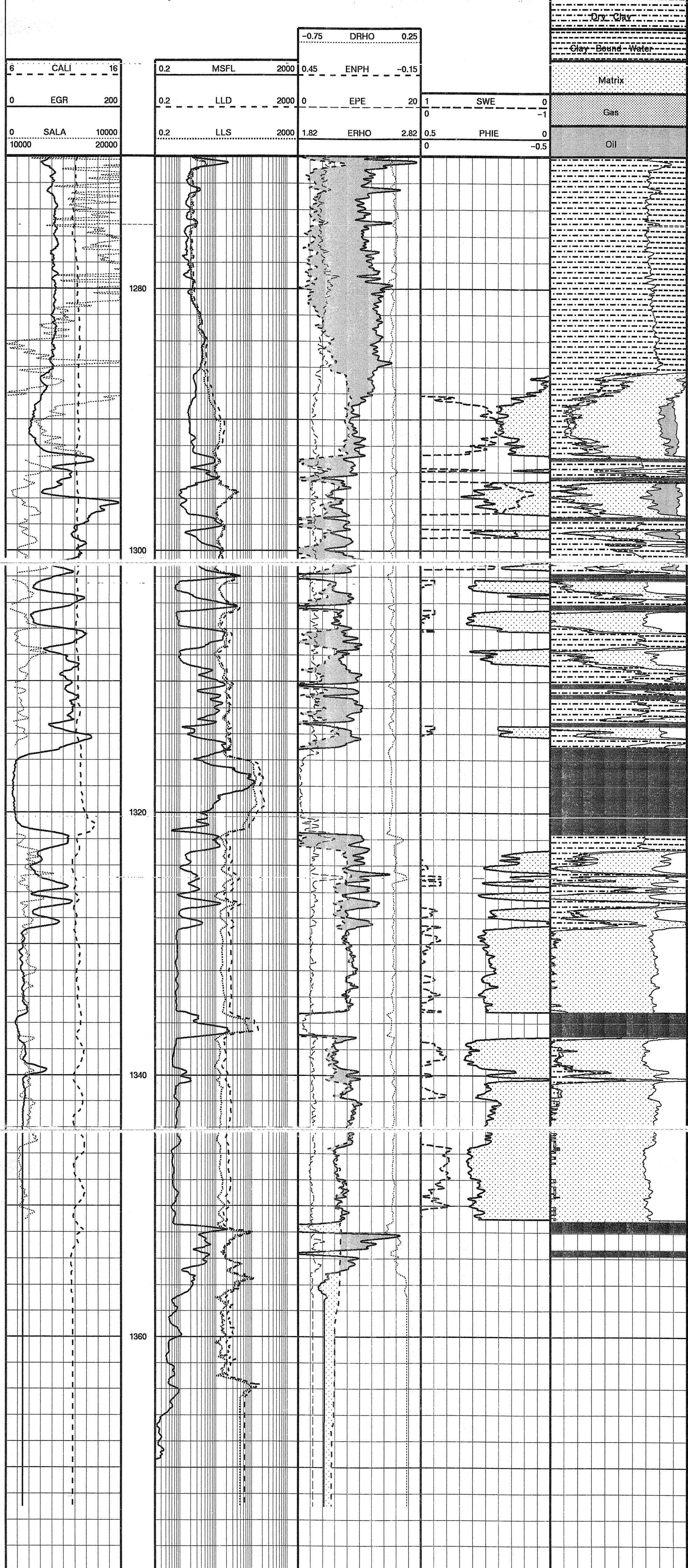


DOLPHIN A3

ANALYSIS PARAMETERS.

Some zoned interval(s) not processed
VSH and POROSITY from DENSITY-NEUTRON (GR used for initial est. of VSH).

Tortuosity; 'a' : 1.00
Cementation factor; 'm' : 2.00
Saturation exponent; 'n' : 2.00
Fluid density : 1.02
Gamma Ray value in clean formation (grmin) : 25
Gamma Ray value in shale (grmax) : 130
Apparent shale resistivity : 25.00
Apparent bulk density of shale : 2.350
Apparent neutron porosity of shale : 0.330
Input hydrocarbon density : 0.70
Lower limit of grain density : 2.645
Upper limit of grain density : 2.675
Formation Water entered in terms of SALINITY.
Database curve selected for Salinity input.
Measured Rmf : 0.160
Temperature at which Rmf measured : 16.4 deg.C
Sxo derived from Sw (Sxo = Sw^2) : 0.30
Z (where Sxo=SW^2) : 1370
Logged TD : 1370
Logged bottom hole temperature : 63 deg.C
Est. sea bed temperature : 14 deg.C
Water depth : 38.0
KB height : 42.0
Irreducible water saturation : 0.025
Vsh upper limit for effective porosity : 0.65
Minimum effective porosity for hydrocarbons : 0.03



129

130

131

132

133