

DEPT. NAT. RES & ENV



PE905880

Enclosures from WCR
Cobia-1
(W649)

VI ENCLOSURES:

- I
 - a) Structure on Top Latrobe (Pre drill)
 - b) Cross Section A-A' (Tailor-Cobia-Halibut) (Pre drill)
 - c) Structure on Top Latrobe (Post drill)
 - d) Cross Section A-A' (Tailor-Cobia-Halibut) (Post drill)

 - II
 - a) Completion log *and composite log.*
 - b) Rock Log
 - c) Baroid PPM Gas Chromatograph log
 - d) Baroid ADT log
 - e) Baroid "d" exponent/drillability log

 - III Amerada Pressure Charts

 - IV
 - a) ISF-SCT 2" & 5"
 - b) FDC-GR-CNL-CAL 2" & 5"

 - V
 - a) HDT 5"
 - 1) Arrow Plot 1.5' step 5"
 - 2) Arrow Plot 2.5' step 2" & 5"
 - 3) Arrow Plot 9' step 5"
 - b) Velocity Survey Time-Depth Curve
 - c) Formation Interval Test Log

 - VI Well History Chart
-

Enclosure 1



PE902770

This is an enclosure indicator page.
The enclosure PE902770 is enclosed within the
container PE905880 at this location in this
document.

The enclosure PE902770 has the following characteristics:

ITEM_BARCODE = PE902770
CONTAINER_BARCODE = PE905880
NAME = Structure Map Top of Latrobe Group
Before Drilling
BASIN = GIPPSLAND
PERMIT =
TYPE = SEISMIC
SUBTYPE = HRZN_CONTR_MAP
DESCRIPTION = Structure Map Top of Latrobe Group
Before Drilling (enclosure 1c from
Enclosure Folder of WCR)for Cobia-1
REMARKS =
DATE_CREATED = 31/07/1972
DATE_RECEIVED =
W_NO = W649
WELL_NAME = COBIA-1
CONTRACTOR = ESSO
CLIENT_OP_CO = ESSO

(Inserted by DNRE - Vic Govt Mines Dept)

PE902769

This is an enclosure indicator page.
The enclosure PE902769 is enclosed within the
container PE905880 at this location in this
document.

The enclosure PE902769 has the following characteristics:

- ITEM_BARCODE = PE902769
- CONTAINER_BARCODE = PE905880
 - NAME = Geological Cross Section A-A' Cobia 1 Prospect
 - BASIN = GIPPSLAND
 - PERMIT =
 - TYPE = WELL
 - SUBTYPE = CROSS_SECTION
 - DESCRIPTION = Geological Cross Section A-A' ,
Pre-Drill, (enclosure 1d from Enclosure
Folder of WCR) Cobia 1 Prospect
- REMARKS =
- DATE_CREATED = 31/07/1972
- DATE_RECEIVED =
- W_NO = W649
- WELL_NAME = COBIA-1
- CONTRACTOR = ESSO
- CLIENT_OP_CO = ESSO

(Inserted by DNRE - Vic Govt Mines Dept)

PE905877

This is an enclosure indicator page.
The enclosure PE905877 is enclosed within the
container PE905880 at this location in this
document.

The enclosure PE905877 has the following characteristics:

ITEM_BARCODE = PE905877
CONTAINER_BARCODE = PE905880
 NAME = Structure Map; Top of Latrobe Group
 (after drilling)
 BASIN = GIPPSLAND BASIN
 PERMIT = VIC/L5
 TYPE = SEISMIC
 SUBTYPE = STRUCTURE_MAP
DESCRIPTION = Structure Map; Top of Latrobe
 Group--after drilling (Enclosure 1c
 from Enclosures Folder; attachment to
 WCR) for Cobia-1
REMARKS =
DATE_CREATED = 31/10/72
DATE_RECEIVED =
 W_NO = W649
 WELL_NAME = COBIA-1
CONTRACTOR = ESSO EXPLORATION AND PRODUCTION
 AUSTRALIA INC.
CLIENT_OP_CO = ESSO EXPLORATION AND PRODUCTION
 AUSTRALIA INC.

(Inserted by DNRE - Vic Govt Mines Dept)

PE905879

This is an enclosure indicator page.
The enclosure PE905879 is enclosed within the
container PE905880 at this location in this
document.

The enclosure PE905879 has the following characteristics:

- ITEM_BARCODE = PE905879
- CONTAINER_BARCODE = PE905880
 - NAME = Geological Cross-Section A-A' (after Driling)
 - BASIN = GIPPSLAND BASIN
 - PERMIT = VIC/L5
 - TYPE = WELL
 - SUBTYPE = CROSS_SECTION
- DESCRIPTION = Geological Cross-Section A-A', Post Drill, (Enclosure 1d from Enclosures Folder; attachment to WCR) for Cobia-1
- REMARKS =
- DATE_CREATED = 31/10/72
- DATE_RECEIVED =
- W_NO = W649
- WELL_NAME = COBIA-1
- CONTRACTOR = ESSO EXPLORATION AND PRODUCTION AUSTRALIA INC.
- CLIENT_OP_CO = ESSO EXPLORATION AND PRODUCTION AUSTRALIA INC.

(Inserted by DNRE - Vic Govt Mines Dept)

Enclosure 2

PE604476

This is an enclosure indicator page.
The enclosure PE604476 is enclosed within the
container PE905880 at this location in this
document.

The enclosure PE604476 has the following characteristics:

ITEM_BARCODE = PE604476
CONTAINER_BARCODE = PE905880
NAME = Well Competition Log
BASIN = GIPPSLAND BASIN
PERMIT = VIC/L5
TYPE = WELL
SUBTYPE = COMPLETION_LOG
DESCRIPTION = Well Completion Log (Enclosure 2a from
Enclosures Folder of WCR) for Cobia-1
REMARKS =
DATE_CREATED = 27/08/72
DATE_RECEIVED =
W_NO = W649
WELL_NAME = COBIA-1
CONTRACTOR = ESSO EXPLORATION AND PRODUCTION
AUSTRALIA INC.
CLIENT_OP_CO = ESSO EXPLORATION AND PRODUCTION
AUSTRALIA INC.

(Inserted by DNRE - Vic Govt Mines Dept)

PE601448

This is an enclosure indicator page.
The enclosure PE601448 is enclosed within the
container PE905880 at this location in this
document.

The enclosure PE601448 has the following characteristics:

- ITEM_BARCODE = PE601448
- CONTAINER_BARCODE = PE905880
- NAME = Composite Well Log
- BASIN = GIPPSLAND
- PERMIT =
- TYPE = WELL
- SUBTYPE = COMPOSITE_LOG
- DESCRIPTION = Composite Well Log (enclosure 2a from
Enclosure Folder of WCR) for Cobia-1
- REMARKS =
- DATE_CREATED = 27/08/1972
- DATE_RECEIVED =
- W_NO = W649
- WELL_NAME = COBIA-1
- CONTRACTOR = ESSO
- CLIENT_OP_CO = ESSO

(Inserted by DNRE - Vic Govt Mines Dept)

PE601449

This is an enclosure indicator page.
The enclosure PE601449 is enclosed within the
container PE905880 at this location in this
document.

The enclosure PE601449 has the following characteristics:

- ITEM_BARCODE = PE601449
- CONTAINER_BARCODE = PE905880
- NAME = Rock Log Clastics
- BASIN = GIPPSLAND
- PERMIT =
- TYPE = WELL
- SUBTYPE = WELL_LOG
- DESCRIPTION = Rock Log Clastics (enclosure 2b from
Enclosures Folder of WCR) for Cobia-1
- REMARKS =
- DATE_CREATED = 26/08/1972
- DATE_RECEIVED =
- W_NO = W649
- WELL_NAME = COBIA-1
- CONTRACTOR = ESSO
- CLIENT_OP_CO = ESSO

(Inserted by DNRE - Vic Govt Mines Dept)

PE604477

This is an enclosure indicator page.
The enclosure PE604477 is enclosed within the
container PE905880 at this location in this
document.

The enclosure PE604477 has the following characteristics:

ITEM_BARCODE = PE604477
CONTAINER_BARCODE = PE905880
NAME = Baroid ppm Mud Log
BASIN = GIPPSLAND BASIN
PERMIT = VIC/L5
TYPE = WELL
SUBTYPE = MUD_LOG
DESCRIPTION = Baroid ppm Mud Log (Enclosure 2c from
Enclosures Folder of WCR) for Cobia-1
REMARKS =
DATE_CREATED = 24/08/72
DATE_RECEIVED =
W_NO = W649
WELL_NAME = COBIA-1
CONTRACTOR = BAROID
CLIENT_OP_CO = ESSO EXPLORATION AND PRODUCTION
AUSTRALIA INC.

(Inserted by DNRE - Vic Govt Mines Dept)

PE604479

This is an enclosure indicator page.
The enclosure PE604479 is enclosed within the
container PE905880 at this location in this
document.

The enclosure PE604479 has the following characteristics:

- ITEM_BARCODE = PE604479
- CONTAINER_BARCODE = PE905880
- NAME = Baroid ADT Mud Log
- BASIN = GIPPSLAND BASIN
- PERMIT = VIC/L5
- TYPE = WELL
- SUBTYPE = MUD_LOG
- DESCRIPTION = Baroid ADT Mud Log (Enclosure 2d from
Enclosures Folder of WCR) for Cobia-1
- REMARKS =
- DATE_CREATED =
- DATE_RECEIVED =
- W_NO = W649
- WELL_NAME = COBIA-1
- CONTRACTOR = BAROID
- CLIENT_OP_CO = ESSO EXPLORATION AND PRODUCTION
AUSTRALIA INC.

(Inserted by DNRE - Vic Govt Mines Dept)

PE604475

This is an enclosure indicator page.
The enclosure PE604475 is enclosed within the
container PE905880 at this location in this
document.

The enclosure PE604475 has the following characteristics:

- ITEM_BARCODE = PE604475
- CONTAINER_BARCODE = PE905880
- NAME = Baroid "d" Exponent/Drillability Log
- BASIN = GIPPSLAND BASIN
- PERMIT = VIC/L5
- TYPE = WELL
- SUBTYPE = WELL_LOG
- DESCRIPTION = Baroid "d" Exponent /Drillability Log
(Enclosure 2e from Enclosures Folder of
WCR) for Cobia-1
- REMARKS =
- DATE_CREATED =
- DATE_RECEIVED =
- W_NO = W649
- WELL_NAME = COBIA-1
- CONTRACTOR = BAROID
- CLIENT_OP_CO = ESSO EXPLORATION AND PRODUCTION
AUSTRALIA INC.

(Inserted by DNRE - Vic Govt Mines Dept)

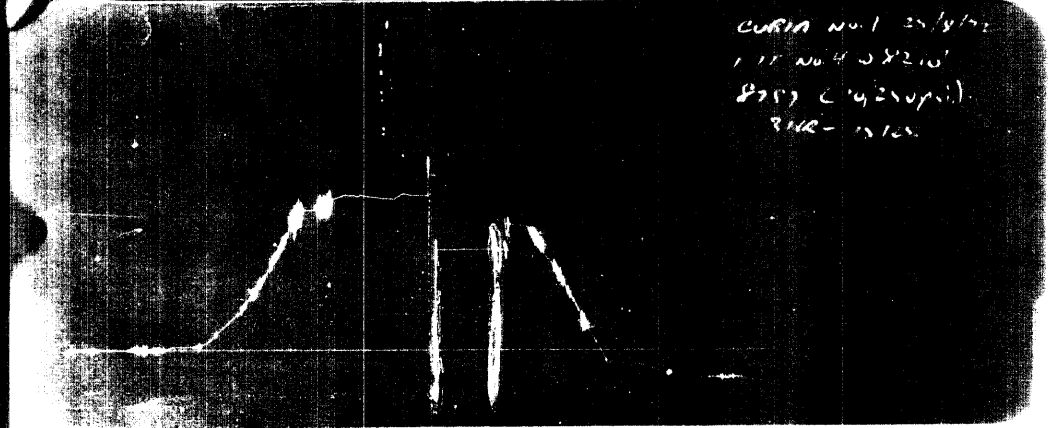
Enclosure 3

CHART NO 1
FIT NO 1'S 7903
8757/102407
1574-202

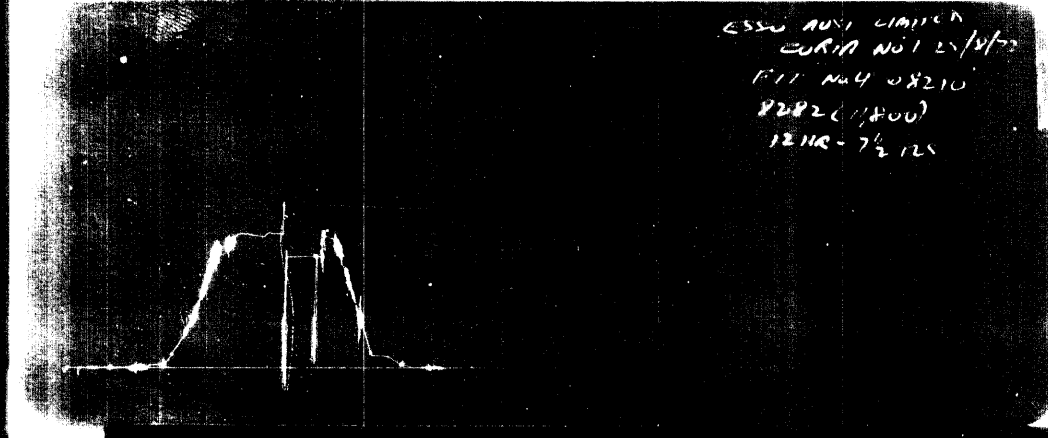
CHART NO 1
FIT NO 1'S 7903
8757/102407
1574-202

CHART NO 1
FIT NO 1'S 7903
8757/102407
1574-202

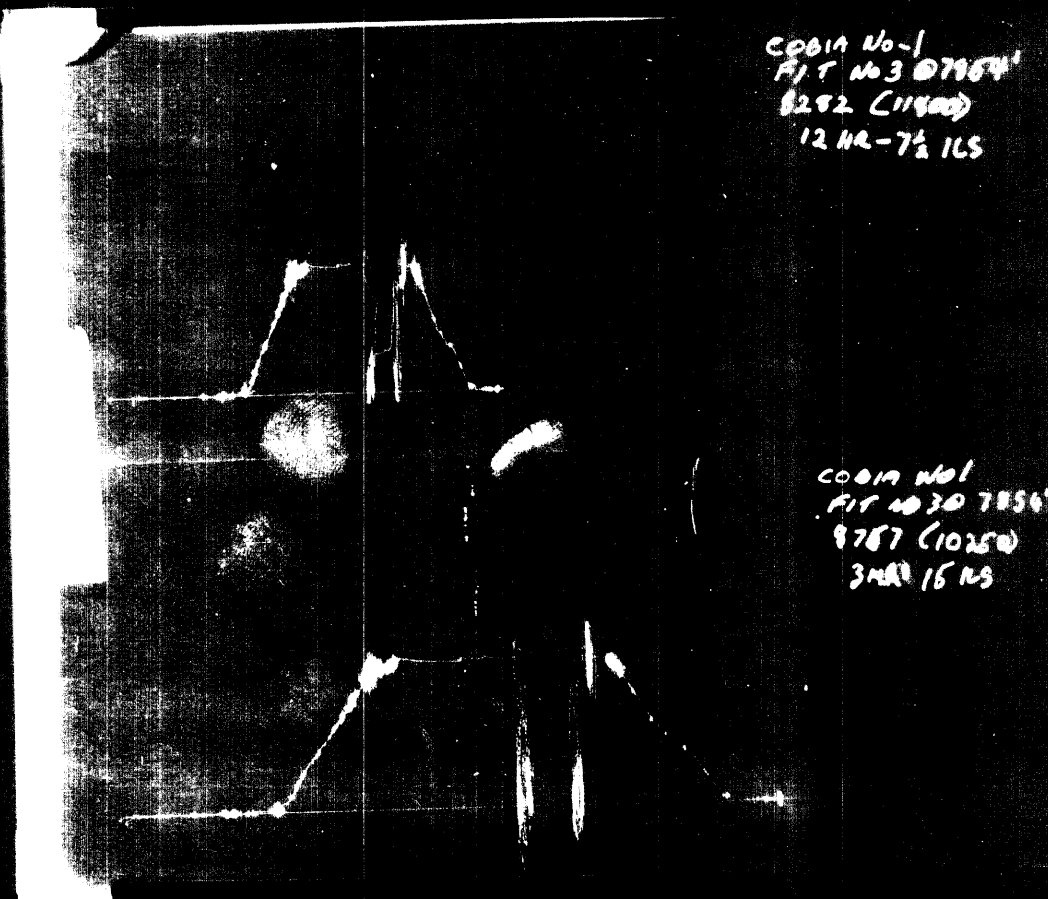
CURIA No 1 25/8/52
FIT No 4 08210
8757 (142500)
3HR - 15 ILS



ESSE AND LAMIER
CURIA No 1 25/8/52
FIT No 4 08210
8282 (11800)
12HR - 7 1/2 ILS



COBIA No 1
FIT No 3 07854
8282 (11800)
12HR - 7 1/2 ILS



COBIA No 1
FIT No 30 7856
8787 (10250)
3HR 15 NS



COBIA NO1
FIT 20 78 26
8252 (11000)
12NR-7410

COBIA NO1
FIT 20 78 26
8252 (11000)
12NR-7410

Enclosure 4



PE604471

This is an enclosure indicator page.
The enclosure PE604471 is enclosed within the
container PE905880 at this location in this
document.

The enclosure PE604471 has the following characteristics:

- ITEM_BARCODE = PE604471
- CONTAINER_BARCODE = PE905880
 - NAME = Wireline Log (ISF-SCT)
 - BASIN = GIPPSLAND BASIN
 - PERMIT = VIC/L5
 - TYPE = WELL
 - SUBTYPE = WELL_LOG
- DESCRIPTION = Wireline Log; FDC-GR-CNL-CAL;
(Enclosure 4b from Enclosures Folder of
WCR) for Cobia-1
- REMARKS = This Log has both 5" & 2"
- DATE_CREATED = 24/08/72
- DATE_RECEIVED =
 - W_NO = W649
 - WELL_NAME = COBIA-1
 - CONTRACTOR = SCHLUMBERGER
 - CLIENT_OP_CO = ESSO EXPLORATION AND PRODUCTION
AUSTRALIA INC.

(Inserted by DNRE - Vic Govt Mines Dept)

PE604470

This is an enclosure indicator page.
The enclosure PE604470 is enclosed within the
container PE905880 at this location in this
document.

The enclosure PE604470 has the following characteristics:

ITEM_BARCODE = PE604470
CONTAINER_BARCODE = PE905880
NAME = Wireline Log (FDC-GR-CNL-CAL)
BASIN = GIPPSLAND BASIN
PERMIT = VIC/L5
TYPE = WELL
SUBTYPE = WELL_LOG
DESCRIPTION = Wireline Log; ISF-SCT; (Enclosure 4a
from Enclosures Folder of WCR) for
Cobia-1
REMARKS = This Log has both 5" & 2"
DATE_CREATED = 24/08/72
DATE_RECEIVED =
W_NO = W649
WELL_NAME = COBIA-1
CONTRACTOR = SCHLUMBERGER
CLIENT_OP_CO = ESSO EXPLORATION AND PRODUCTION
AUSTRALIA INC.

(Inserted by DNRE - Vic Govt Mines Dept)

Enclosure 5



PE604473

This is an enclosure indicator page.
The enclosure PE604473 is enclosed within the
container PE905880 at this location in this
document.

The enclosure PE604473 has the following characteristics:

ITEM_BARCODE = PE604473
CONTAINER_BARCODE = PE905880
NAME = Arrow Plot 1.5' step 5"
BASIN = GIPPSLAND BASIN
PERMIT = VIC/L5
TYPE = WELL
SUBTYPE = WELL_LOG
DESCRIPTION = Arrow Plot 9' step 5" (Enclosure 5a
(1) from Enclosures Folder of WCR) for
Cobia-1
REMARKS =
DATE_CREATED =
DATE_RECEIVED =
W_NO = W649
WELL_NAME = COBIA-1
CONTRACTOR =
CLIENT_OP_CO = ESSO EXPLORATION AND PRODUCTION
AUSTRALIA INC.

(Inserted by DNRE - Vic Govt Mines Dept)

PE604472

This is an enclosure indicator page.
The enclosure PE604472 is enclosed within the
container PE905880 at this location in this
document.

The enclosure PE604472 has the following characteristics:

ITEM_BARCODE = PE604472
CONTAINER_BARCODE = PE905880
NAME = Arrow Plot 2.5' step 2" & 5"
BASIN = GIPPSLAND BASIN
PERMIT = VIC/L5
TYPE = WELL
SUBTYPE = WELL_LOG
DESCRIPTION = Arrow Plot 2.5' step 2" & 5"
(Enclosure 5a (2) from Enclosures
Folder of WCR) for Cobia-1
REMARKS =
DATE_CREATED =
DATE_RECEIVED =
W_NO = W649
WELL_NAME = COBIA-1
CONTRACTOR =
CLIENT_OP_CO = ESSO EXPLORATION AND PRODUCTION
AUSTRALIA INC.

(Inserted by DNRE - Vic Govt Mines Dept)

PE604474

This is an enclosure indicator page.
The enclosure PE604474 is enclosed within the
container PE905880 at this location in this
document.

The enclosure PE604474 has the following characteristics:

- ITEM_BARCODE = PE604474
- CONTAINER_BARCODE = PE905880
- NAME = Arrow Plot 9' step 5"
- BASIN = GIPPSLAND BASIN
- PERMIT = VIC/L5
- TYPE = WELL
- SUBTYPE = WELL_LOG
- DESCRIPTION = Arrow Plot 1.5' step 5" (Enclosure 5a
(3) from Enclosures Folder of WCR) for
Cobia-1
- REMARKS =
- DATE_CREATED =
- DATE_RECEIVED =
- W_NO = W649
- WELL_NAME = COBIA-1
- CONTRACTOR =
- CLIENT_OP_CO = ESSO EXPLORATION AND PRODUCTION
AUSTRALIA INC.

(Inserted by DNRE - Vic Govt Mines Dept)

PE601447

This is an enclosure indicator page.
The enclosure PE601447 is enclosed within the
container PE905880 at this location in this
document.

The enclosure PE601447 has the following characteristics:

- ITEM_BARCODE = PE601447
- CONTAINER_BARCODE = PE905880
- NAME = Dipmeter Log Interpretation
- BASIN = GIPPSLAND
- PERMIT =
- TYPE = WELL
- SUBTYPE = WELL_LOG
- DESCRIPTION = Dipmeter Log Interpretation (enclosure
5a no.2 from Enclosure Folder of WCR)
for Cobia-1
- REMARKS =
- DATE_CREATED = 30/08/1972
- DATE_RECEIVED =
- W_NO = W649
- WELL_NAME = COBIA-1
- CONTRACTOR = ESSO
- CLIENT_OP_CO = ESSO

(Inserted by DNRE - Vic Govt Mines Dept)

PE905878

This is an enclosure indicator page.
The enclosure PE905878 is enclosed within the
container PE905880 at this location in this
document.

The enclosure PE905878 has the following characteristics:

ITEM_BARCODE = PE905878
CONTAINER_BARCODE = PE905880
NAME = Time Depth Curve
BASIN = GIPPSLAND BASIN
PERMIT = VIC/L5
TYPE = WELL
SUBTYPE = VELOCITY_CHART
DESCRIPTION = Time Depth Curve (Enclosure 5b from
Enclosures Folder; attachment to WCR)
for Cobia-1
REMARKS =
DATE_CREATED = 25/08/72
DATE_RECEIVED =
W_NO = W649
WELL_NAME = COBIA-1
CONTRACTOR = ESSO EXPLORATION AND PRODUCTION
AUSTRALIA INC.
CLIENT_OP_CO = ESSO EXPLORATION AND PRODUCTION
AUSTRALIA INC.

(Inserted by DNRE - Vic Govt Mines Dept)

PE604469

This is an enclosure indicator page.
The enclosure PE604469 is enclosed within the
container PE905880 at this location in this
document.

The enclosure PE604469 has the following characteristics:

ITEM_BARCODE = PE604469
CONTAINER_BARCODE = PE905880
NAME = Formation Tester
BASIN = GIPPSLAND BASIN
PERMIT = VIC/L5
TYPE = WELL
SUBTYPE = FIT
DESCRIPTION = Formation Tester (Enclosure 5c from
Enclosures Folder of WCR) for Cobia-1
REMARKS =
DATE_CREATED = 25/08/72
DATE_RECEIVED =
W_NO = W649
WELL_NAME = COBIA-1
CONTRACTOR = SCHLUMBERGER
CLIENT_OP_CO = ESSO EXPLORATION AND PRODUCTION
AUSTRALIA INC.

(Inserted by DNRE - Vic Govt Mines Dept)

Enclosure 6

PE902772

This is an enclosure indicator page.
The enclosure PE902772 is enclosed within the
container PE905880 at this location in this
document.

The enclosure PE902772 has the following characteristics:

- ITEM_BARCODE = PE902772
- CONTAINER_BARCODE = PE905880
- NAME = Well History Chart
- BASIN = GIPPSLAND
- PERMIT =
- TYPE = WELL
- SUBTYPE = DIAGRAM
- DESCRIPTION = Well History Chart (enclosure 6 from
Enclosures Folder of WCR) for Cobia-1
- REMARKS =
- DATE_CREATED = 30/11/1972
- DATE_RECEIVED =
- W_NO = W649
- WELL_NAME = COBIA-1
- CONTRACTOR = ESSO
- CLIENT_OP_CO = ESSO

(Inserted by DNRE - Vic Govt Mines Dept)