



GEOGRAM*

(Synthetic Seismogram)

Company: ESSO AUSTRALIA LTD

Well: BLENNY 1

Field: WILDCAT

Country: AUSTRALIA

Reference No: 560798

Date Logged: 7-05-92

Location: 38 47' S

Elevations: KB: 22.00 DF: 21.70 GL: -40.00

Permanent Datum: NSL

Depth Units: METRES

LOG INFORMATION

FIELD RECORDING: Engineer: D. BRIDCH Location: Program Version: 32.4

COMPUTATION: Analyst: T. BOWMAN Date: 19/1/88

Logging Datum: 22.00

Seismic Reference Datum: 0.00

Sonic Calibration By: Check Shots: YES

Two-Way Time Sample Interval: 2 ms Environment: offshore

True Vertical Depth Corrections Applied:

Source of True Vertical Depth Data:

Maximum Hole Deviation:

Run	Date	Type	Return Depth	Completion Depth	Top Depth	Bottom Depth
1	4-0-82	AS			191.9	191.9
2	7-0-82	AS			143	792
1	8-0-82	OS	10.8 M BELOW HILL	15.8 M BELOW HILL	143	143
2						

GEOGRAM MODEL ASSUMPTIONS

Equal time slope model of horizontal plane layers.
Phase acoustic waves at normal incidence.
No intrinsic attenuation.

POLARITY

An upgoing wave, reflected by an increase in acoustic impedance with depth, is displayed as a white trough under normal polarity.

SIGNATURES

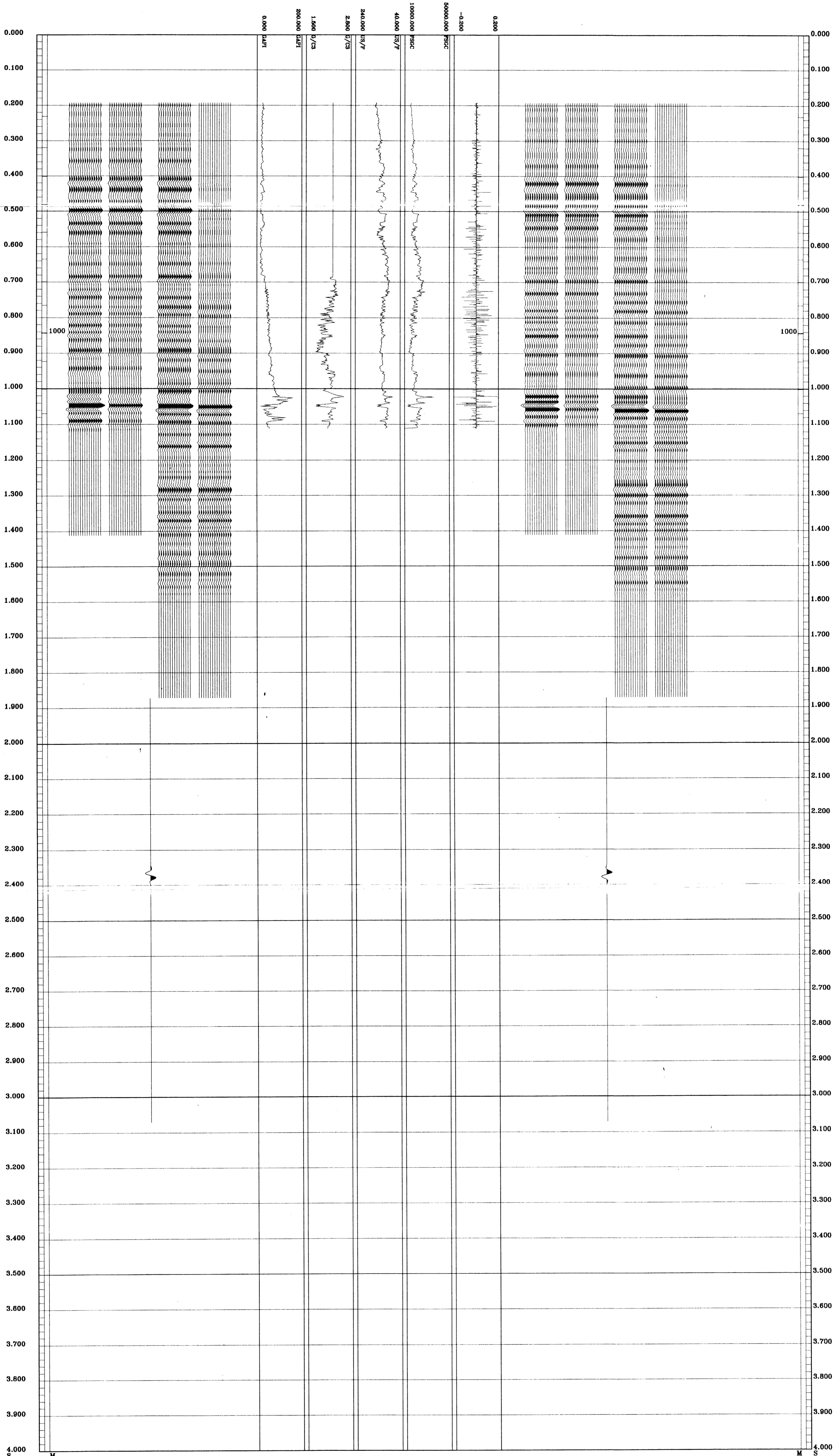
All signatures displayed in the Geogram results correspond to a wavelet convolved with a reflection coefficient of -0.5 (A decrease in acoustic impedance with depth).

REMARKS

All interpretations are opinions based on inferences from electrical or other measurements and we cannot and do not guarantee the accuracy or correctness of any interpretations, and we shall not, except in the case of gross or willful negligence on our part, be liable or responsible for any loss, costs, damages or expenses incurred or sustained by anyone resulting from any interpretations made by any of our officers, agents or employees. These interpretations are also subject to Clause 4 of our General Terms and Conditions as set out in our current Price Schedule.

**** GEOGRAM ****
35 HERTZ ZERO PHASE
RICKER WAVELET WITH -90 DEG. PHASE SHIFT
BLENNY-1

- MULTIPLES ONLY
REVERSE POLARITY
- PRIMARIES AND MULTIPLES
REVERSE POLARITY
- PRIMARIES WITH TRANSMISSION LOSS
REVERSE POLARITY
- PRIMARIES
REVERSE POLARITY
- REFLECTION
- ACOUSTIC IMPEDANCE
- SONIC
- DENSITY
- GAMMA RAY
- MULTIPLES ONLY
NORMAL POLARITY
- PRIMARIES AND MULTIPLES
NORMAL POLARITY
- PRIMARIES WITH TRANSMISSION LOSS
NORMAL POLARITY
- PRIMARIES
NORMAL POLARITY



COMPANY ESSO AUSTRALIA LTD
 FIELD WILDCAT
 WELL BLENNY 1
 COUNTRY AUSTRALIA

