

BLACKBACK A-2

Gippsland Basin, Victoria
Concession: VIC/L20

POST-DRILL LOCATION: Latitude: 38° 33' 28.94"S Longitude: 148° 32' 39.96"E
 (Top of Latrobe) AMG X: 634567.24mE AMG Y: 5731121.0mN

ELEVATION: G.L.: -395.0m R.T.: 26.0m Water Depth: 395.0m

DATES: Spudded: 21/02/1999 (17.5" hole)
 Rig Released: 02/06/1999
 I.P. Established: 12/06/99
 (Initial production)

SERVICE COMPANIES:
 DRILLING CONTRACTOR: Sedco Forex SDA/Admiral
 WIRELINE LOGGING: Schlumberger Dowell
 CASING: Weatherford

COMPILED BY: Sheryl Sazenis

DRAFTED BY: Henryk Wojcik

DRILLED BY: Sedco Forex 702

TOTAL DEPTH: 3811mMDRT

PLUGGED BACK T.D.: 3777mMDRT (Bridge plug)

CLASSIFICATION: Subsea Development

STATUS: Oil producer

PRODUCTION TESTING: ---
 DIVERS: ---
 MUD LOGGING: ---
 PRESURE RECORDING: ---
 WELL VELOCITY SURVEY: ---
 MUD ENGINEERING: ---
 LWD: ---
 --- Sonsub
 --- Geoservices
 --- Baroid

LEGEND

LOG ANALYSIS DATA
 NS - Net Sand
 NOS - Net Oil Sand
 NOSL - Net Gas Sand
 SW - Water Saturation

MUD DATA
 P - Porosity
 Sd - Sand
 MW - Mud Weight
 FV - Fluid Velocity
 PV - Plastic Velocity
 YF - Yield Point
 Gs - Gas Strength
 pH - Acidity/Alkalinity
 WL - Water Loss
 Ca - Calcium
 Sd - Solids
 H2O - Water
 OI - Oil

PLUG
 No Rec.
 Rec.

PERFORATED INTERVAL

PLUG

RECOVERED SIDE WALL CORE LITHOLOGY
 SST - Sandstone
 SST - Silstone
 SST - Mudstone
 SST - Shale
 CLST - Claystone
 LMST - Limestone
 ML - Marl
 COAL - Coal

SIDE WALL CORE - NO RECOVERY

FIT

MDTRIFT PRETEST RUNS/SEAT NUMBER

MDTRIFT SAMPLE RUN/SAMPLE NUMBER

MDT VERTICAL/HORIZONTAL PERMEABILITY TEST

PACKER

BRIDGE PLUG

LITHOLOGICAL SYMBOLS

Micas
 Chert
 Carbonaceous Matter
 Calcareous
 Glauconite
 Corals
 Bryozoons
 Brachiopods
 Cephalopods

Other Symbols
 SHOW OR STAIN
 HYDROCARBON CUT
 FLUORESCENCE
 GAS SHOW
 OIL PRODUCTION
 GAS PRODUCTION
 INTERPRETED OIL PRODUCTION
 INTERPRETED GAS PRODUCTION
 INTERPRETED WATER PRODUCTION
 WATER PRODUCTION
 CONDENSATE PRODUCTION
 INTERPRETED CONDENSATE BEARING
 DST WITH GAS RECOVERED
 DST WITH OIL RECOVERED
 SURVEY POINT
 CASING SHOPE
 TUBING
 MUD

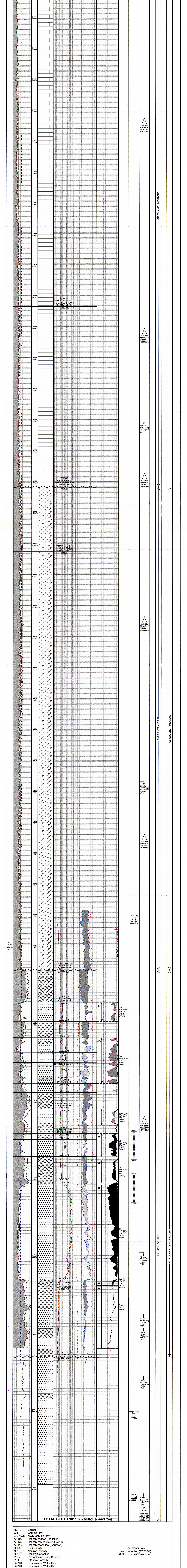
Palaeontology
 Palaeocyods
 Echinoids
 Fish Remains
 Plant Remains
 Spores
 Leaves
 Foram
 Fossils

Log	Interval (mMDRT)	Survey	Interval (mMDRT)
PEX(AIT)-HNGS	2800 - 3783	WVO	703.47 - 3750.15
GR (MWD)	1285 - 3811		

WELL DATA			
Date	10/5/1999	30/4/1999 to 24/05/1999	
Run		1-R	
Log	PEX(AIT)-HNGS	GR (MWD)	
Depth Driller	3764 m MDRT		
Depth Logger	3766 m MDRT		
Bottom Log Interval	3763 m MDRT	3811 m MDRT	
Top Log Interval	2800 m MDRT	1295 m MDRT	
Casing Driller	13 375" @ 1296m		
Casing Logger	1290		
Casing Size	12 250		
Casing Weight	186#		
Bit Size	12 250 inches	12 250 inches	
Type of Fluid in Hole	PETROFREE	PETROFREE	
Gravity	11.2	10.8 - 11.1	
Em. @ Measured Temp			
Rmf @ Measured Temp			
Time @ Measured Temp			
Max. Recorded Temp	85°C		
Equipment / Location	33_VEA	MDC125	
Recorded By	D. Davern / Scandallia		
Witnessed By	G. Clotal/D. Bernan		

CORES		PERFORATIONS	
From (mMDRT)	To (mMDRT)	From (mMDRT)	To (mMDRT)
		3685	3694
		3699	3708
			Shotcut
			12

CASING				PLUGS	
Size	Set @ (mMDRT)	Sx Cmt	Formation	From (mMDRT)	To (mMDRT)
30"	487.0	1100	Gippsland Limestone	3777.0	
20"	892.7	1533	Gippsland Limestone		
13 1/2"	1286.31	948	Gippsland Limestone		
9 7/8"	3803.58	924	Latrobe Formation		
4 1/2" subm	3605.21	---	Latrobe Entrance Formation		



TOTAL DEPTH 3811.0m MDRT (-2883.1m)

HCAL Calliper
 GR Gamma Ray
 NWD Gamma Ray
 AHT90 Resistivity deep (Induction)
 AHT10 Resistivity medium (Induction)
 AHT30 Resistivity shallow (Induction)
 RHOZ Bulk Density
 NPHI, C Neutron Porosity
 HNRB Density Corrosion
 PEIZZ Photoelectric Cross Section
 Effective Porosity
 BVWG Bulk Volume Water-Gas
 BVWO Bulk Volume Water-Oil

BLACKBACK A-2
 Initial Production (12/06/99)
 8 KSTBD at 25% Watercut