

GEOGRAM

(Synthetic Seismogram)

Y. Makris/ESSE/04/01

Company: ESSO AUSTRALIA LTD.
 Well: BLACKBACK #3
 Field: BLACKBACK
 Country: AUSTRALIA
 Well Number: SYJ36101/1591012
 Well Name: 02-43H-1994
 Date Logged: 02-APR-1994
 Date Processed: 12-APR-1994
 Location: 028 31' 34.84" S
 148 31' 05.59" E
 Elevation: NS: 25.00 DF: 24.70 QL: -318.00
 Permanent Datum: NSL
 Depth Units: METRES

LOG INFORMATION

FIELD RECORDING: Engineer: S. MATHIASI Location: VFA Program Version: 620-424
 Construction: Analyst: A. MATHIASI Core: PV1 Barrels: 5.5

Logging Datum: ELEVATION ABOVE MEAN SEA LEVEL: 25.00
 Seismic Reference Datum: 0.00

Source Calibration by Check Shot: YES
 Some Edited by Analyst: YES

Two-Way Time Sample Interval: 2 ms Environment:

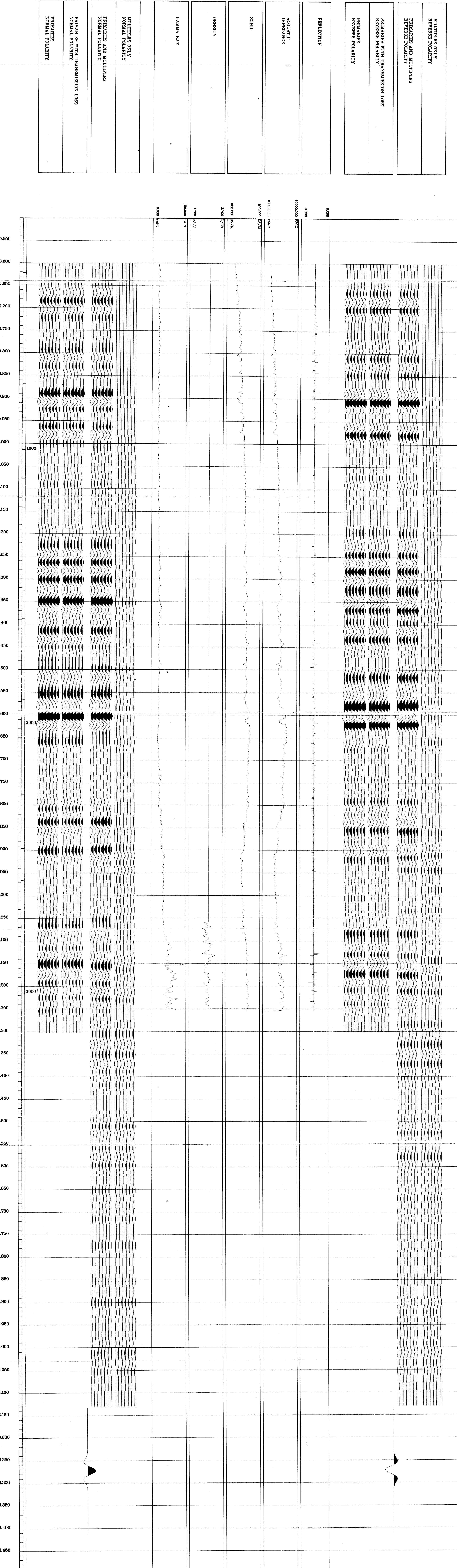
True Vertical Depth Corrections Applied: 0
 Source of True Vertical Depth Data: MAGNETIC TIE DEVIATION:

Well	Date	Time	Depth	Interval	Change Size	Top	Bottom
						Depth	Depth
1	01-04-94	04:00:00	8.875 M	2700 M	2700 M	2000 M	2000 M
1	01-04-94	04:00:00	8.875 M	2700 M	2700 M	2000 M	2000 M

GEOGRAM MODEL ASSUMPTIONS

Equal time slice model of horizontal plane layers.
 Phase acoustic waves at normal incidence.
 No intrinsic attenuation.
POLARITY
 An upgoing wave, reflected by an increase in acoustic impedance with depth, is displayed as a white trough under normal polarity.
SIGNALURES
 All signatures displayed in this Geogram results correspond to a wavelet convolved with a reflection coefficient of 0.5 (A decreases in acoustic impedance with depth).

**** GEOGRAM ****
20 HERTZ ZERO PHASE
RICKER WAVELET
 VERTICAL SCALE = 40 CM/SEC



COMPANY ESSO AUSTRALIA LTD.
 FIELD BLACKBACK
 WELL BLACKBACK #3
 COUNTRY AUSTRALIA

