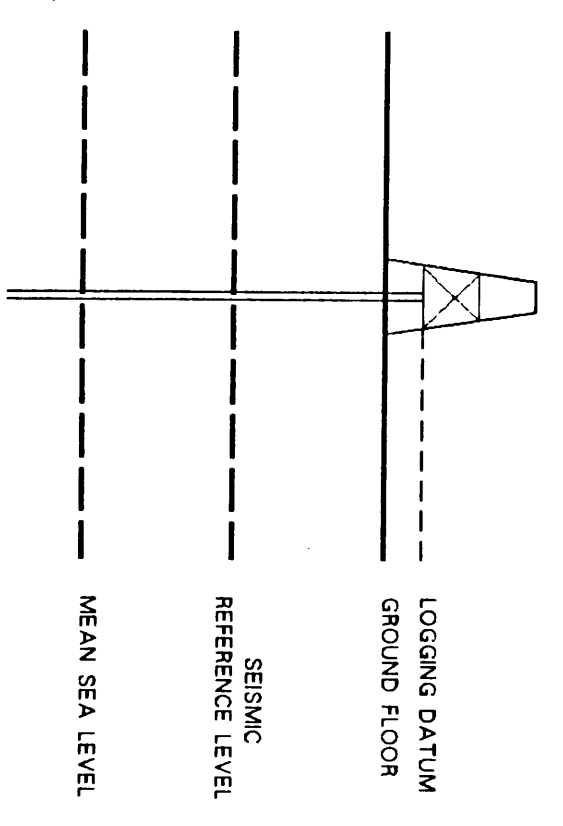


SEISMIC CALIBRATION LOG

(Adjusted Continuous Velocity Log)

Company: ESSO AUSTRALIA LTD
 Well: BLACKBACK 1 (ST-1/ST-2)
 Field: WILDCAT
 Country: AUSTRALIA
 Reference No: 56460 Interval: 3905.00 to 575.00
 Date Logged: 16/6/89 Date Processed: 20/7/89
 Location: 38 33.337' S 147 33.42.68' E
 Elevations: KB: 2100 DF: 2070 GL: -418.00
 Permanent Datum: MSL Depth Units: METRES
 FIELD RECORDING: Engineer: G. SMITH Location: Program Version: 22.2
 COMPUTATION: Analyst: Z. AARFELS Centre: SVJ Bamble: 16/00/83
 ELEVATION ABOVE MEAN SEA LEVEL
 Logging Datum: 2100
 Seismic Reference Datum: 000



Total Number of Levels: 17
 Depth Reference: SMD
 Time Reference: SMD

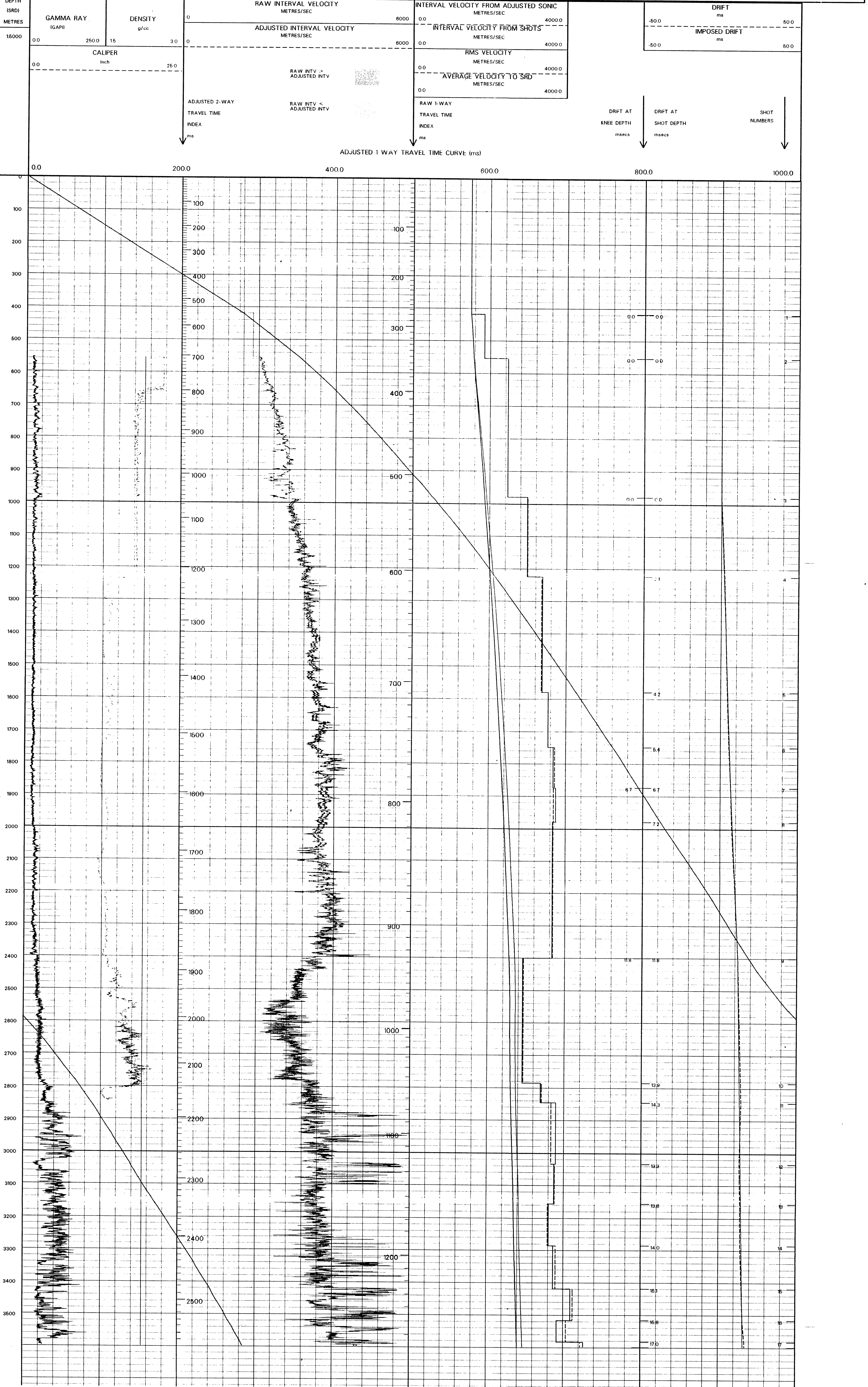
Run	Date	Tool Type	Bit Size	Drift	Churn Size	Depth	Top Depth	Bottom Depth
1		Gun	Hydro	Gun	Hydro	Gun	Hydro	Gun
2		Gun	Hydro	Gun	Hydro	Gun	Hydro	Gun
3		Gun	Hydro	Gun	Hydro	Gun	Hydro	Gun
4		Gun	Hydro	Gun	Hydro	Gun	Hydro	Gun
5		Gun	Hydro	Gun	Hydro	Gun	Hydro	Gun
6		Gun	Hydro	Gun	Hydro	Gun	Hydro	Gun
7		Gun	Hydro	Gun	Hydro	Gun	Hydro	Gun
8		Gun	Hydro	Gun	Hydro	Gun	Hydro	Gun
9		Gun	Hydro	Gun	Hydro	Gun	Hydro	Gun
10		Gun	Hydro	Gun	Hydro	Gun	Hydro	Gun
11		Gun	Hydro	Gun	Hydro	Gun	Hydro	Gun
12		Gun	Hydro	Gun	Hydro	Gun	Hydro	Gun
13		Gun	Hydro	Gun	Hydro	Gun	Hydro	Gun
14		Gun	Hydro	Gun	Hydro	Gun	Hydro	Gun
15		Gun	Hydro	Gun	Hydro	Gun	Hydro	Gun
16		Gun	Hydro	Gun	Hydro	Gun	Hydro	Gun
17		Gun	Hydro	Gun	Hydro	Gun	Hydro	Gun

REMARKS

FOLD HERE

The well name, location and borehole reference data were furnished by the customer.

All interpretations are opinions based on inferences from electrical or other measurements, and we cannot and do not guarantee the accuracy or correctness of any interpretations, and we shall not, except in the case of gross or willful negligence on our part, be liable or responsible for any loss, costs, damages or expenses incurred or sustained by anyone resulting from any interpretations made by any of our officers, agents or employees. These interpretations are also subject to Clause 4 of our General Terms and Conditions as set out in our current Price Schedule.



COMPANY ESSO AUSTRALIA LTD.
 FIELD WILDCAT
 WELL BLACKBACK 1 (ST-1/ST-2)
 COUNTRY AUSTRALIA