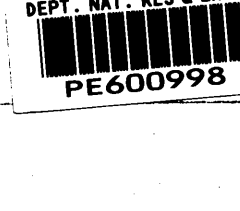




HOLE SIZE
26" to 569m
17.5" to 1265m
12.25" to 3050m



EXLOG SUITE
Formation Evaluation Log
Pressure Evaluation Log
Drilling Data Pressure Log
Temperature Data Log
Wireline Data Log
SEMAR Computer Plots

COMPANY: ESSO AUSTRALIA
WELL: Blackback No.1 ST 1
FIELD: Exploration
REGION: Gippsland Basin, VIC
COORDINATES: 038 33' 3.53"S
148 33' 42.12"E

SPUD DATE: 14th May 1989
ELEVATION: RKB-MSL: 21 m
RKB-SL: 439 m

TOTAL DEPTH: 3050 m
CONTRACTOR: Southern Cross
RIG/TYPE: Semi-submersible

LOG INTERVAL: 2448m to 3050m
DATE: 14/05/89 to 22/05/89
SCALE: 1:500 UNIT 244
Log by: M. Sale, D. Bozendaal, J. Mehan

CASING RECORD
20" to 564m
13.375" to 1250m
9.675" to 2952m

DRILLING FLUIDS
Seawater/gel to 2495m
KCl-Polymer to 3050m

LITHOLOGY SYMBOLS

ABBREVIATIONS

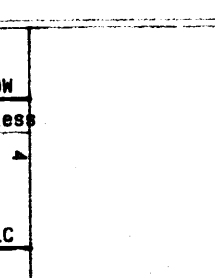
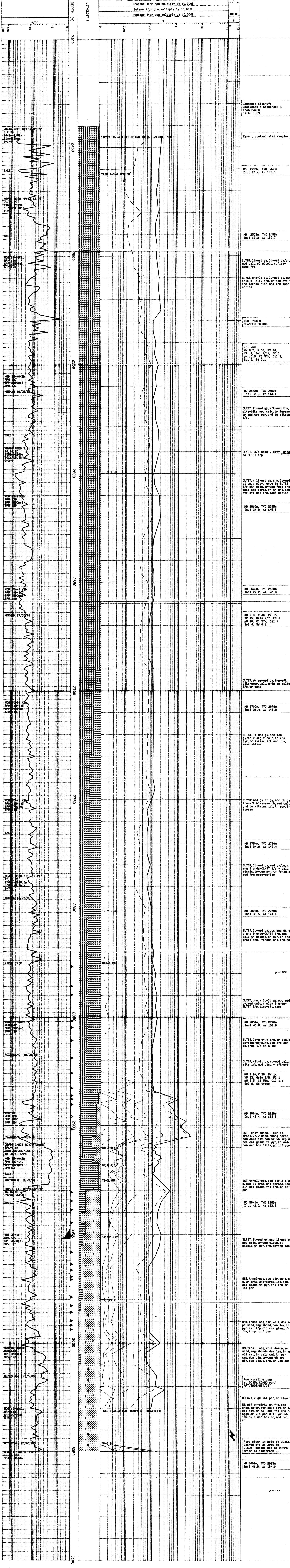
| | | | |
|-----|-------------------|-----|-------------|
| MB | NEW BIT | SVG | SURVEY GAS |
| RB | REIN BIT | C | CARBIDE |
| CB | CORE BIT | N | NEW DENSITY |
| WB | WEIGHT ON BIT | V | PERCENT VES |
| HW | HEAVY MUD BIT | F | FILTRATE |
| FLC | FLUM CHECK | FC | FILTER CAKE |
| CR | CIRCULATE RETURNS | PV | PLASTIC VIS |
| PR | POOR RETURNS | PV | YIELD POINT |
| WR | WATER RETURNS | SSL | SOLIDS |
| LAT | LOGGED AFTER TRIP | SD | SAND - S |
| DB | BACKGROUND GAS | S | SALINITY |
| TG | TRIP GAS | RM | MUD RESIST |
| STB | SHORT TRIP GAS | RFW | FILY RESIS |
| CG | CONNECTION GAS | | |
| SMG | SMUD GAS | | |

CASTING SEAT
CORDED INTERVAL
UNRECOVERED
SIDEWALL CORE

WIRELINE LOG RUN
TEST INTERVAL
INTERVAL TEST

From W.L.R. Blackback - 1
Wirelog

ESSO AUSTRALIA
Blackback No.1 Sidetrack No.1
Scale 1: 500



Commence kick-off
Blackback 1 Sidetrack 1
from 2448m
14-05-1989

Cement contaminated samples

NO 2453m, TVD 2448m
Incl 17.4, Az 131.0

NO 2503m, TVD 2496m
Incl 19.2, Az 135.7

CLYST, lt-med gy, lt-med gy/gn,
mod calc, sl micic, sbfiss-
mass, fra

CLYST, crs-lt gy, ly-med gy, mod
calc, sl sily 1/2, tr-com pyr, tr-
com foras, disp-mod fra, mass-
sbfiss

MUD SYSTEM
CHANGED TO KCl

KCl Mud
MW 9.7, V 38, PV 10,
YP 12, Seil 4/4, FC 3
pH 10.5, Cl 57k, OII 9,
Sol 5, Sd 0.1

NO 2572m, TVD 2550m
Incl 22.2, Az 143.1

CLYST, lt-med gy, sft-mod fra, sb
bly-alky, mod calc, tr foras,
tr and, com pyr, grd to siltate
1/p.

CLYST, s/a bcom v sily, grdg-
to SLTST 1/p

CLYST, v lt-med gy, crs, lt-med
sl gn, v sily, grdg to SLTST
1/p, str calc, tr-com foras, frage
incl com foras, tr crl, com
pyr, sft-mod fra, mass-sbfiss

NO 2610m, TVD 2590m
Incl 24.8, Az 145.6

NO 2648m, TVD 2630m
Incl 27.2, Az 145.9

MW 9.8, V 40, PV 15,
YP 15, Seil 4/7, FC 1
pH 10.5, Cl 57k, OII 4,
Sol 4, Sd 0.1

CLYST, dk gr-med gy, frs-sft,
bly-mud, calc, grdg to siltat
1/p, tr sand

NO 2705m, TVD 2670m
Incl 31.4, Az 143.8

SLTST, lt-med gy, occ med
gy/bn, v arg v calc, tr-com
pyr, tr micic, sft-mod fra,
mass-sbfiss

CLYST, med gy, lt gy, occ dk gy,
frs-sft, bly-mud, mod calc,
grd to siltate 1/p, tr pyr, tr
foras

NO 2754m, TVD 2720m
Incl 34.8, Az 142.4

SLTST, lt-med gy, med gy/bn, v
arg & grdg-CLYST 1/p, v calc, tr
micic, tr-com pyr, tr foras, sft-
mod fra, mass-sbfiss

NO 2803m, TVD 2750m
Incl 38.5, Az 141.0

CLYST, crs, v lt-lt gy, occ med
gy, mod calc, v sily & grdg-
SLTST 1/p, disp-sft, mass

NO 2851m, TVD 2790m
Incl 40.6, Az 136.8

SLTST, lt-w gy, v arg, tr glauc,
sp-fis-tr-com pyr, tr foras,
fr grdg 1/p to CLYST

CLYST, vit-lt gy, st-mod calc,
sly 1/p, mod disp, v sft-sft

MW 9.9, V 39, PV 14,
YP 13, Seil 3/6, FC 1
pH 10.5, Cl 57k, OII 1.5,
Sol 6, Sd trace

NO 2894m, TVD 2820m
Incl 42.4, Az 133.6

SST, prly consol, cfliss,
trmsl, vf, v srt, ang-abnd,
com calc, cat, com w, arg, str,
occ-com glauc, tr pyr, tr micic,
com med brn lith, gd inf por

SST, trmsl-opp, occ cfl, c-f, dom
c, pr srt, ang-abnd, lse, cin,
com glauc, tr pyr, fr-frm, fr
inf por

NO 2941m, TVD 2863m
Incl 42.5, Az 133.3

SLTST, lt-med gy, occ lt-med bn,
mod calc, tr-com glauc, sl
micic, tr pyr, fra, sbfiss-mass

SST, trmsl-opp, cfl, vc-f, dom w,
pr srt, ang-abnd, dom lse, tr
pyr, cat 1/p, cin, com glauc, fr-
frm, fr inf por

SST, trmsl-opp, vc-f, dom w, pr
srt, ang-abnd, dom lse, tr
pyr, cat 1/p, cin, com glauc, fr-
frm, fr inf por

Run Wireline Logs
at 3045C COM80 run/
RT/SEM/MS/CT

SS, s/a, v gd inf por, no fluer

SS, off wh-dirty wh, f-a, occ
crs, srt, ang-abnd, dom lse, tr
pyr, cat 1/p, cin, com glauc, fr-
frm, fr inf por

Pipe stuck in hole at 3046m,
backed off at 3015m
9.625" casing set at 2952m
prior to sidetrack 2.

NO 3009m, TVD 2913m
Incl 41.8, Az 134.0

GAS EVALUATION EQUIPMENT SUBMERGED

Tg = 0.08