



Schlumberger
**GEOFRAME
 PROCESSED
 INTERPRETATION**

**DRIFT
 CORRECTED SONIC**

Using the following logs:
 FMI-GF
 CSA1-GF
 CST1-GF

COMPANY: CULTUS PETROLEUM NL
 WELL: BALEEN 2
 FIELD: WILDCAT
 FIG: SEDCO 702
 STATE: VICTORIA
 COUNTRY: AUSTRALIA
 Date Logged: 16-OCT-1999
 Well Location: VIC
 Longitude: 148 24'37.5496"E Latitude: 38 01'55.758"S
 Elevations: KB: DF: 26m GL: -55m
 API Number: Job Number: 561295/561296

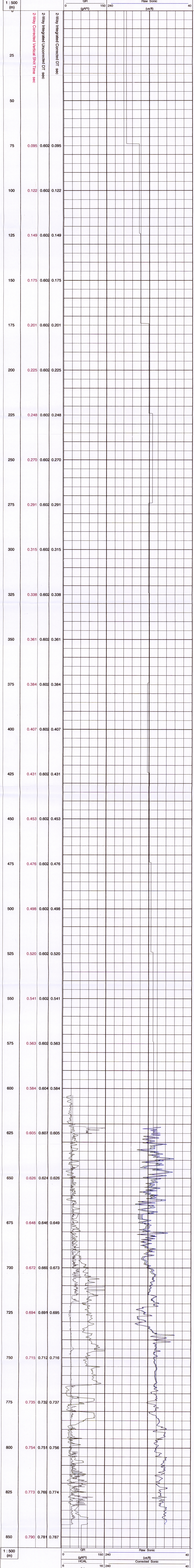
FOLD HERE The well name, location and borehole reference data were furnished by the customer.

All interpretations are opinions based on inferences from electrical or other measurements and we cannot, and do not guarantee the accuracy or correctness of any interpretation, and we shall not, except in the case of gross or willful negligence on our part, be liable or responsible for any loss, costs, damages or expenses incurred or sustained by anyone resulting from any interpretations made by any of our officers, agents or employees. These interpretations are also subject to Clause 4 of our General Terms and Conditions as set out in our current Price Schedule.

Field Recording: Location: VEA Software Version: 9C0-413 Engineer: Daniel Wong / Daniel P
 Office Recording: ICS Center: Melbourne ICS Baseline: GF_3.7 Log Analyst: Yuri Solovyov

Mud and Borehole Measurements:
 Rm @ Measured Temperature: 0.134ohm.m @ 21.4degC BHT: Bitsize: 8.5in
 Rmf @ Measured Temperature: 0.115ohm.m @ 21.6degC Type Fluid in Hole: NaCl/PHPA/Polymer
 Rmc @ Measured Temperature: 0.213ohm.m @ 21.7degC Mud Density: 10.0979lbm/gal

Remarks:
 First run in hole. Stretch correction applied from down log reference: +0.2
 Tide: -1.0m. Total depth offset of -0.8m applied to logs.
 Additional mud data: NaCl = 7.6% by volume
 Barite = 3.7% by volume
 Corrected solids = 6.6% by volume



COMPANY: CULTUS PETROLEUM NL
 WELL: BALEEN 2
 FIELD: WILDCAT
 RIG: SEDCO 702
 STATE: VICTORIA
 Date Logged: 16-OCT-1999 Date Processed: 16-NOV-1999
 Well Location: VIC Longitude: 148 24'37.5496"E Latitude: 38 01'55.758"S
 Elevations: KB: DF: 26 m GL: -55 m
 API Number: Job Number: 561295/561296

