

SEISMIC CALIBRATION LOG

(Adjusted Continuous Velocity Log)

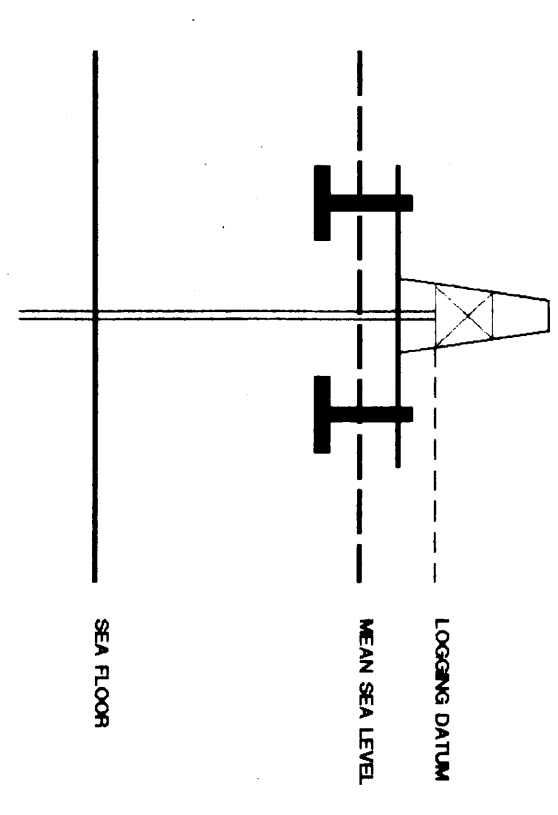
Company: PETROFINA EXPLORATION AUSTRALIA S.A.
 Well: ARCHER-1
 Field: EXPLORATION
 Country: AUSTRALIA

Reference No: 56570 Interval: 405000 to 500000
 Date Logged: 31 03 90 Date Processed: 20/4/90

Location: 038 4807' S 148 3836' E
 Elevations: KB: 2800 DE: 2750 GL: -8700

Permanent Datum: MSL Depth Units: METRES
 (FEET) RECORDS: 222
 COMPUTATION: ANALYST: ZAKHEDS OPERATOR: S.J.J. BUSHNELL

Logging Datum: 2800
 Seismic Reference Datum: 000
 ELEVATION ABOVE MEAN SEA LEVEL



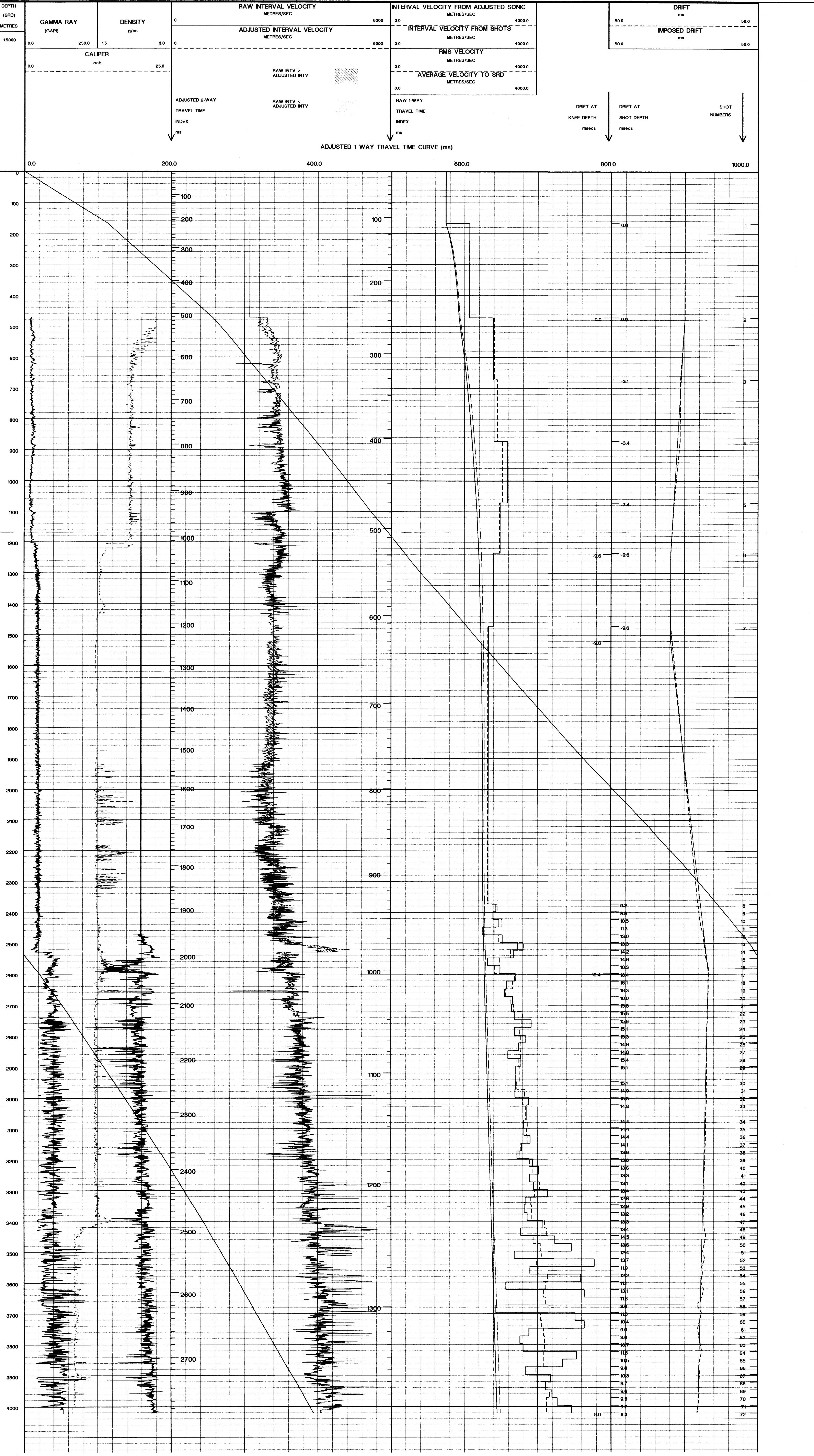
Total Number of Levels: 86
 Depth Reference: SRD
 Time Reference: SRD

Run	Date	Tool Type	AS Start Depth	AS Stop Depth	Change Start Depth	Change Stop Depth	Top Depth	Bottom Depth
1	31/03/90						500	4500

FOLD HERE

The well name, location and borehole reference data were furnished by the customer.

All interpretations are opinions based on inferences from electrical or other measurements and we cannot, and do not guarantee the accuracy or correctness of any interpretations, and we shall not, except in the case of gross or willful negligence on our part, be liable or responsible for any loss, costs, damages or expenses incurred or sustained by anyone resulting from any interpretations made by any of our officers, agents or employees. These interpretations are also subject to Clause 4 of our General Terms and Conditions as set out in our current Price Schedule.



COMPANY: PETROFINA EXPLORATION AUSTRALIA S.A.
 FIELD: EXPLORATION
 WELL: ARCHER-1
 COUNTRY: AUSTRALIA

