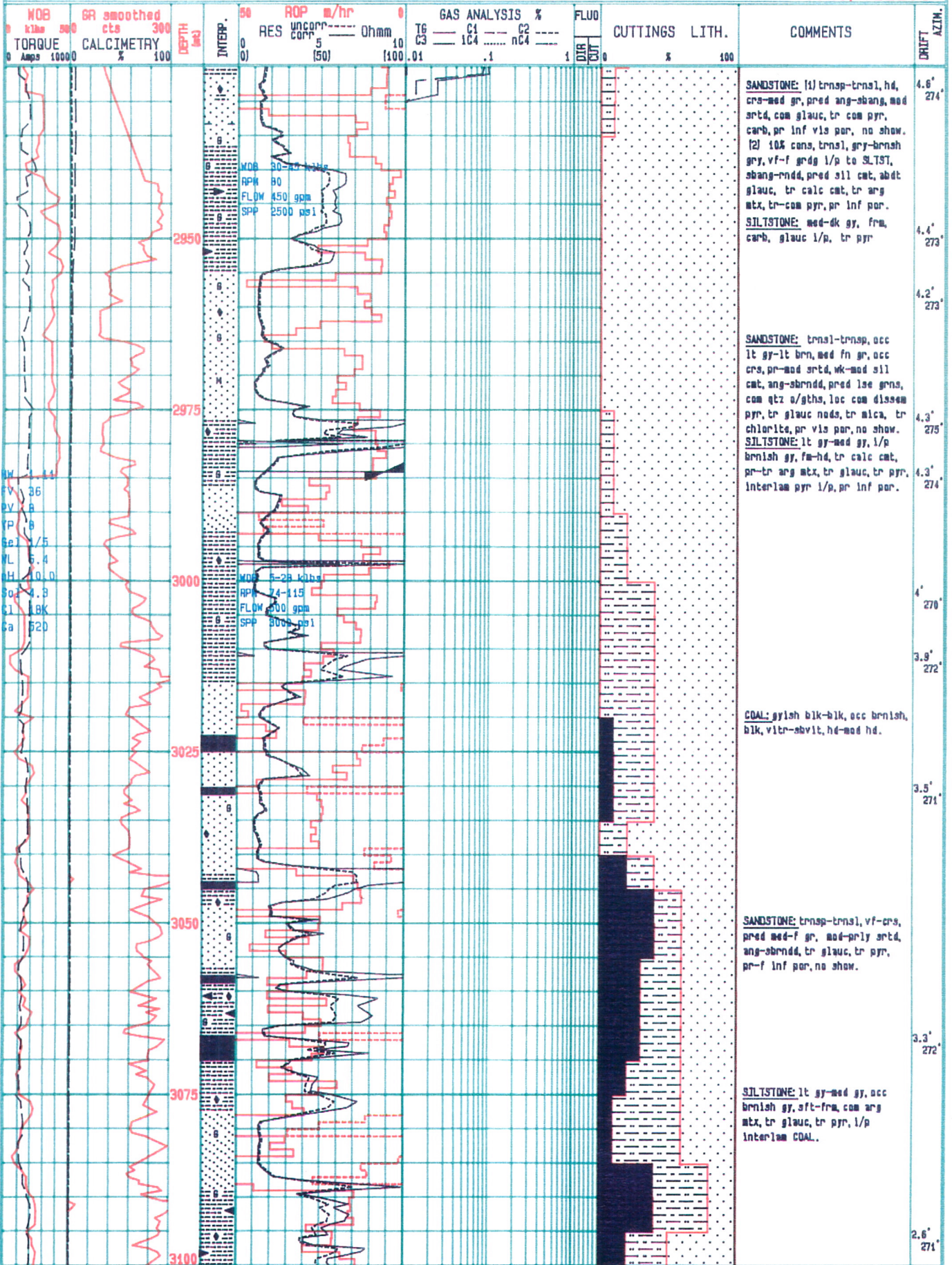


# ANGLER #1

PAGE: 16  
DATE: 10/05/89  
GEOSERVICES/TELECO

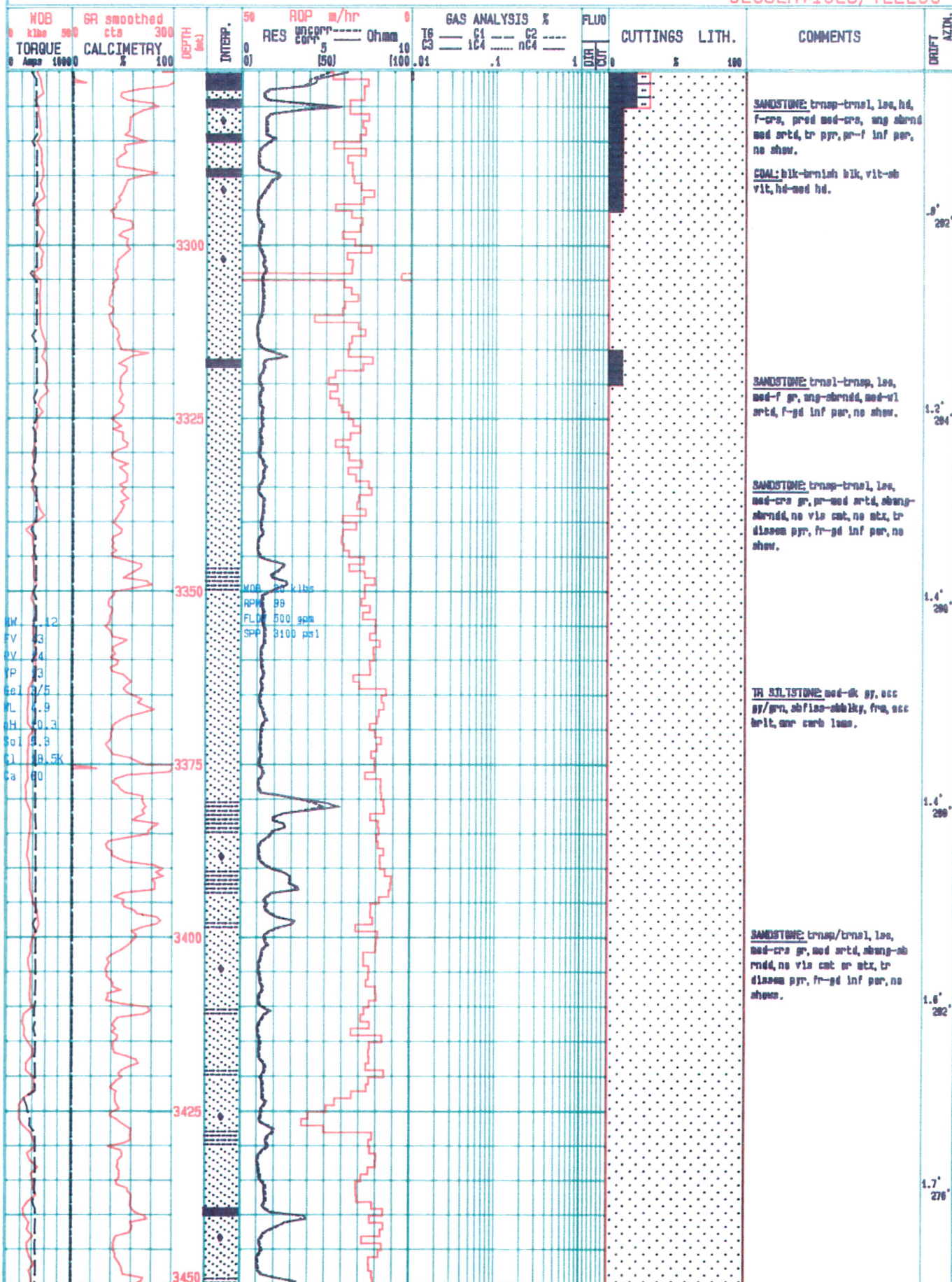






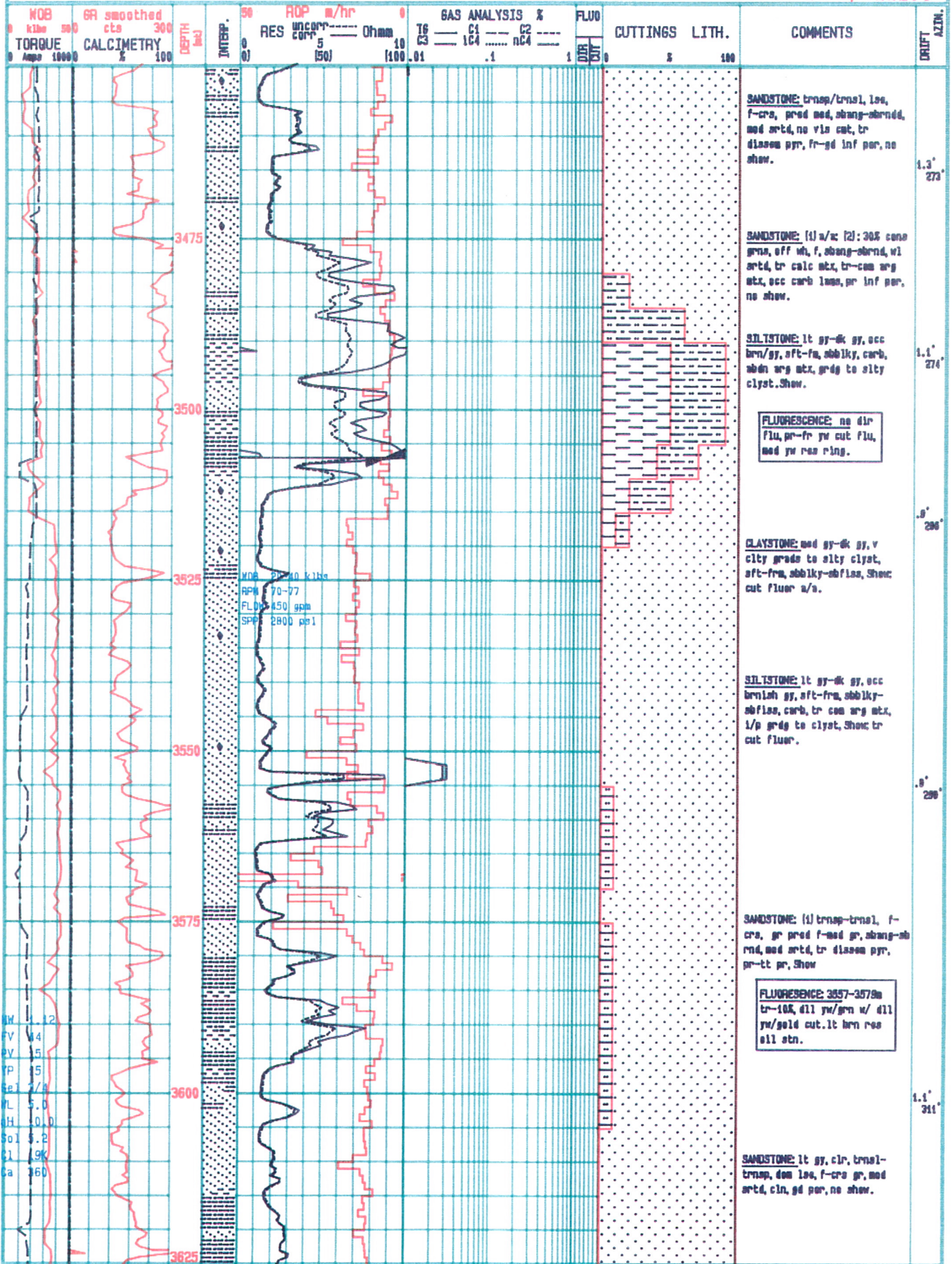
# ANGLER #1

PAGE: 18  
DATE: 17/05/89  
GEOSERVICES/TELECO



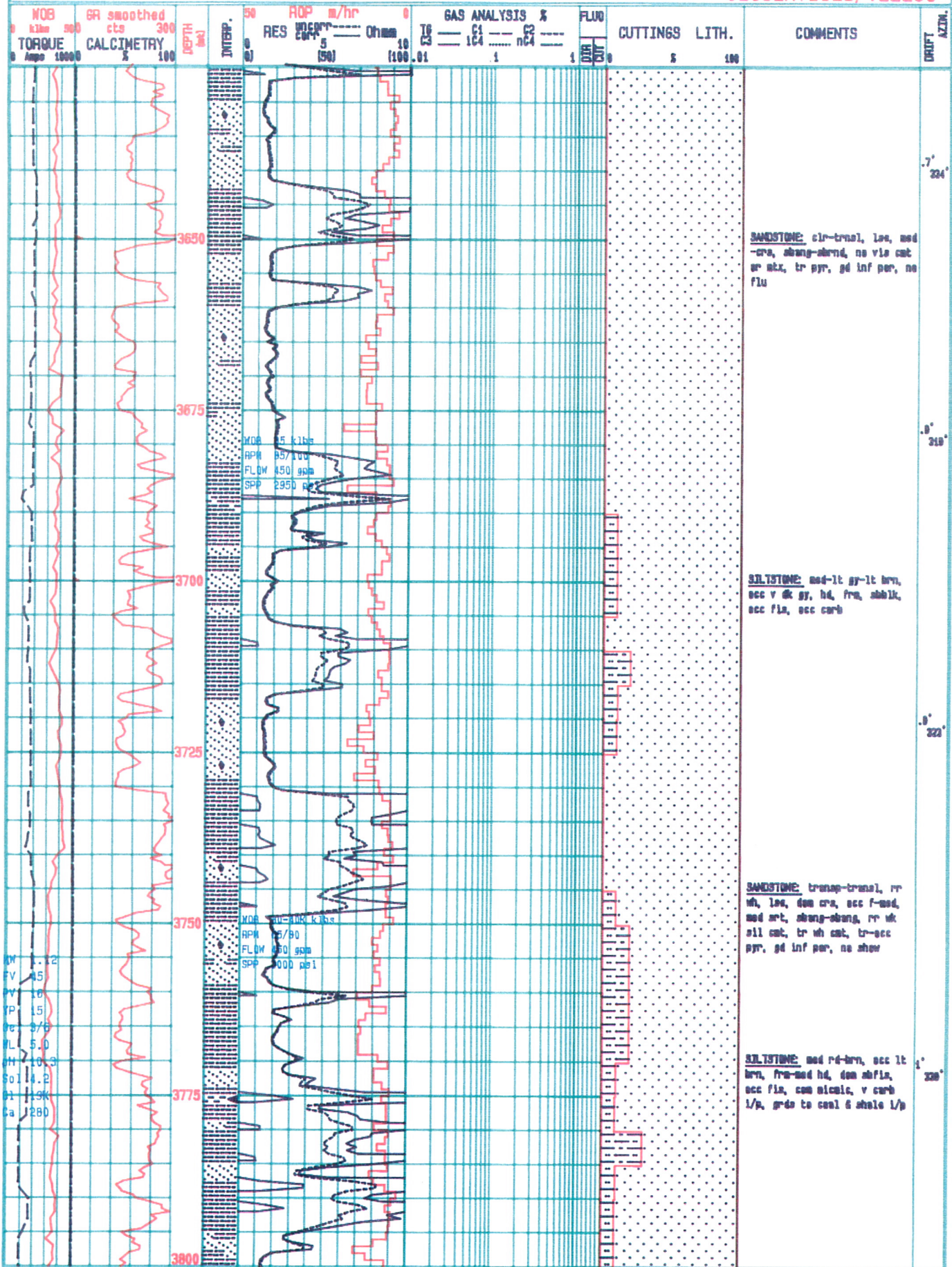
# ANGLER #1

PAGE: 19  
DATE: 17/05/89  
GEOSERVICES/TELECO



# ANGLER #1

PAGE: 20  
DATE: 17/05/89  
GEOSERVICES/TELECO



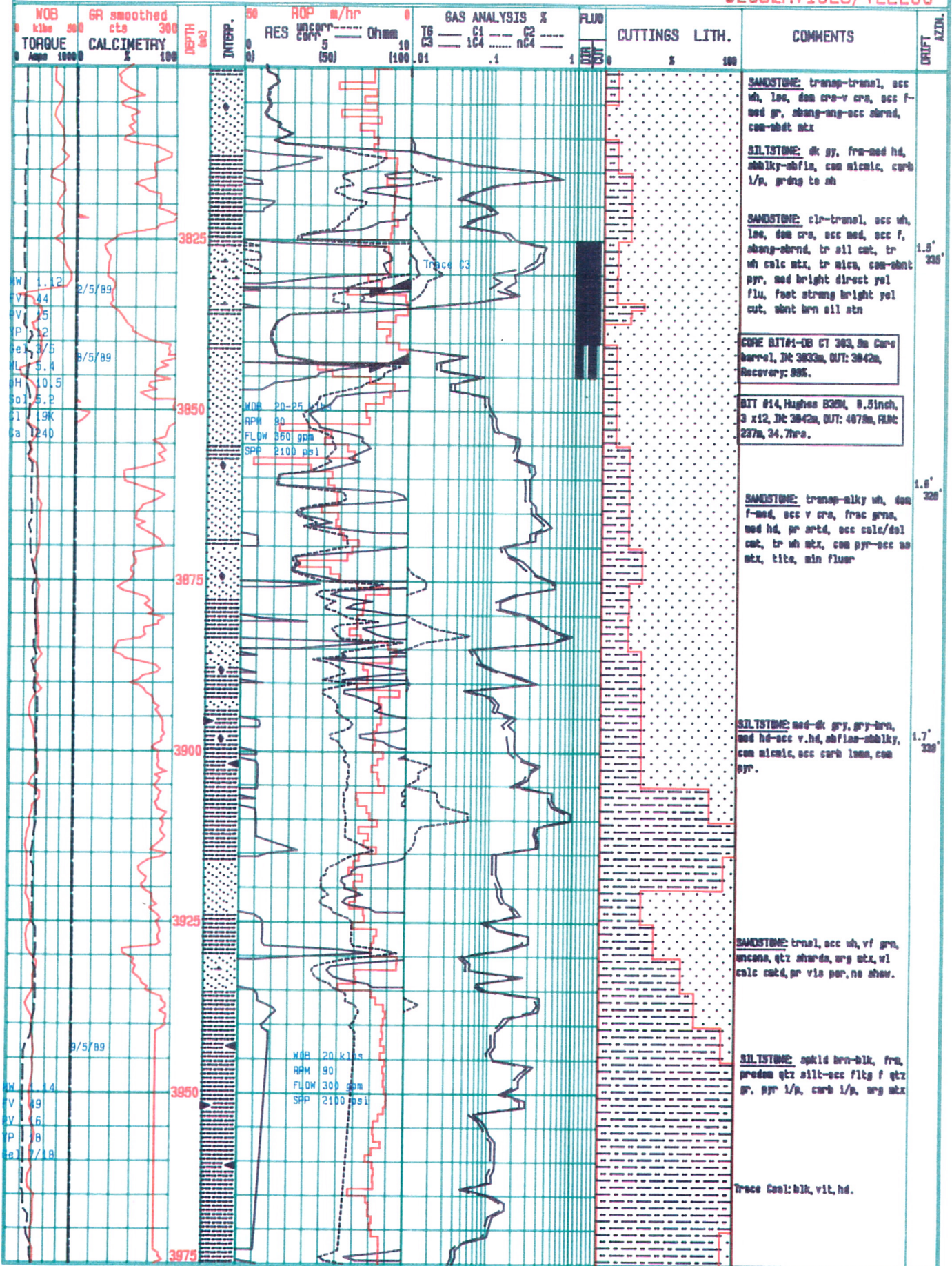
MW 1.12  
 V 0.5  
 VV 1.0  
 VP 1.5  
 VC 3.75  
 VL 5.0  
 MH 10.3  
 Sol 14.2  
 Sl 1.3K  
 Ca 1280

MDR 15 k lbs  
 RPM 85/100  
 FLOW 450 gpm  
 SPP 2950 psi

MDR 100 k lbs  
 RPM 125/90  
 FLOW 450 gpm  
 SPP 3000 psi

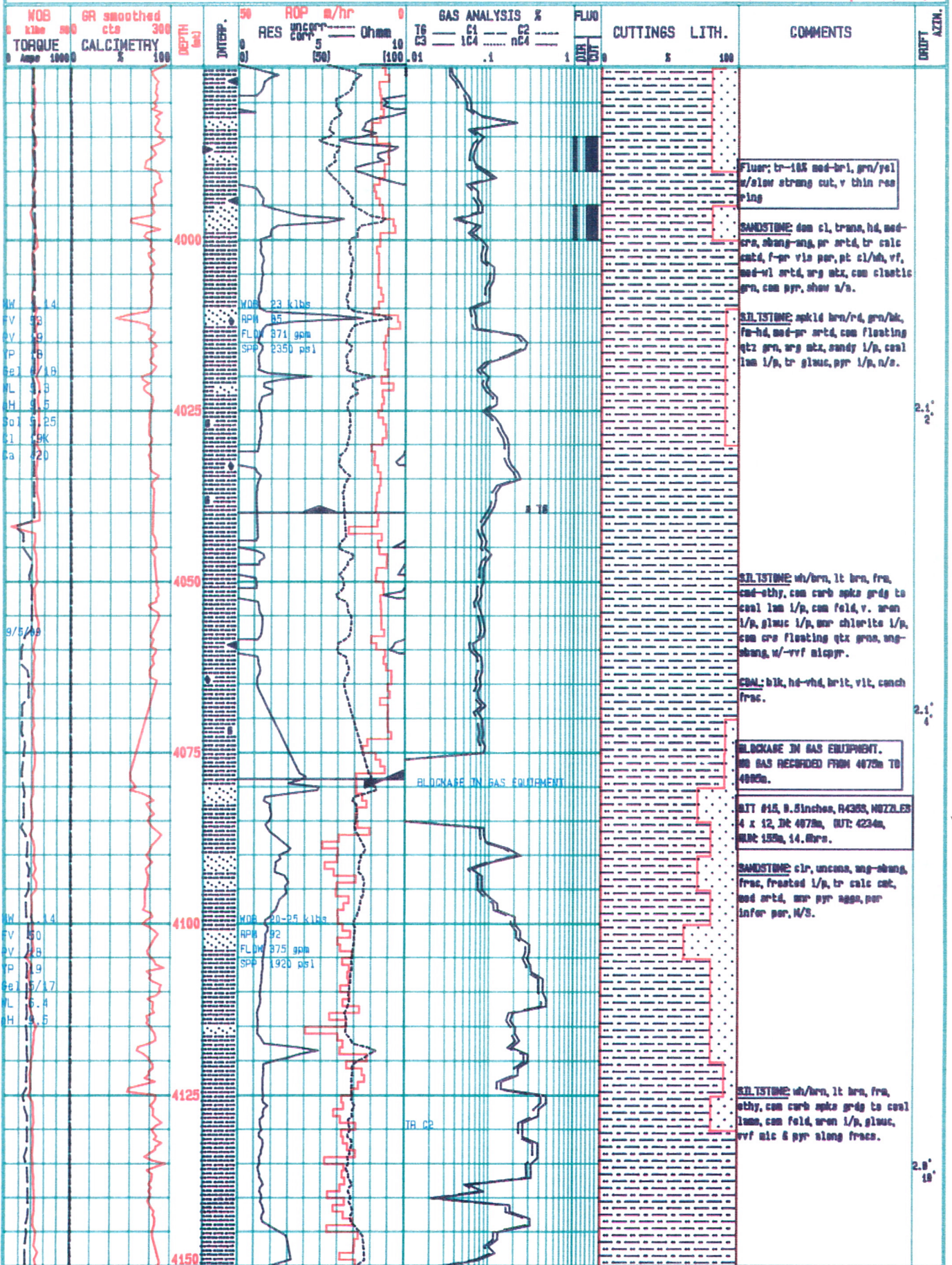
# ANGLER #1

PAGE: 21  
DATE: 17/05/89  
GEOSERVICES/TELECO



# ANGLER #1

PAGE: 22  
DATE: 17/05/89  
GEOSERVICES/TELECO





# ANGLER #1

PAGE: 23  
DATE: 16/05/89  
GEOSERVICES/TELECO

