

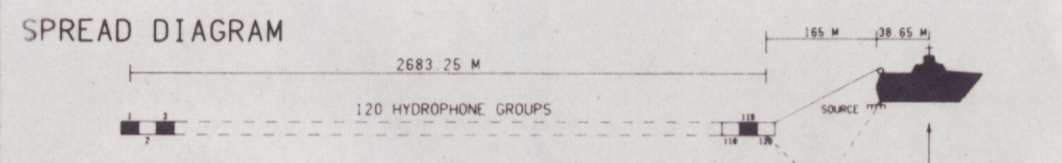
FROM AMBERJACK-1 UCR 104-1
LINE GSE89A-58
S.P. 427 TO 36



GSE - 89A
VIC/P25 VIC/P25(V)
SOUTHEASTERN OIL & GAS P.L.

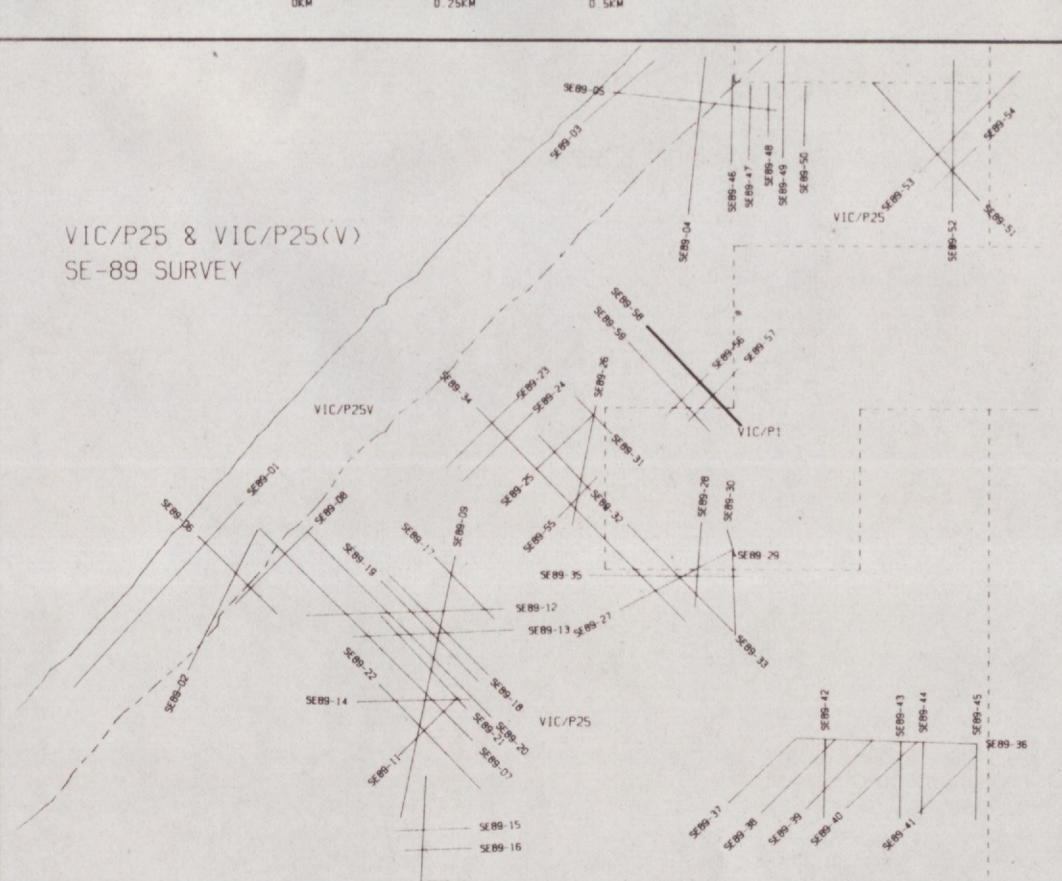
136 DEGREES
DIRECTION SHOT
FILTERED FK MIGRATION

FIELD DATA
DATA SHOT BY: WESTERN GEOPHYSICAL PARTY 130, W. V. WESTERN ORIENT
DATE SHOT: MAY 1989
RECORDING INSTRUMENTS: QRS V, MODEL NO. 357
RECORDING FILTERS: HIGH-CUT FILTER AND SLOPE 180 HZ W TO 0B/OCTAVE
RECORDING POLARITY: LOW-CUT FILTER AND SLOPE 3.8 HZ W TO 18 OBOCTAVE
DIGITAL TAPE FORMAT: POSITIVE NUMBER ON TAPE
RECORD LENGTH/SAMPLE RATE: 4.0 SECONDS AT 2 MS SAMPLE RATE
TIME BREAK: COINCIDENTIAL WITH DIGITAL START
SOURCE TO ANTENNA DISTANCE: 28.65 METRES
SHOTPOINT INTERVAL: 26 METRES - 1 POPS PER SHOTPOINT
STREAMER LENGTH: 2883.25 METRES
GROUP INTERVAL: 25 METRES TRACES 1 - 96
HYDROPHONES HI RES: 20 PER GROUP
HYDROPHONES HI RES: 20 PER GROUP
COVERAGE: 60 FOLD 120 TRACE
PRIMARY NAVIGATION SYSTEM: GPS
BACKUP NAVIGATION SYSTEM: GPS



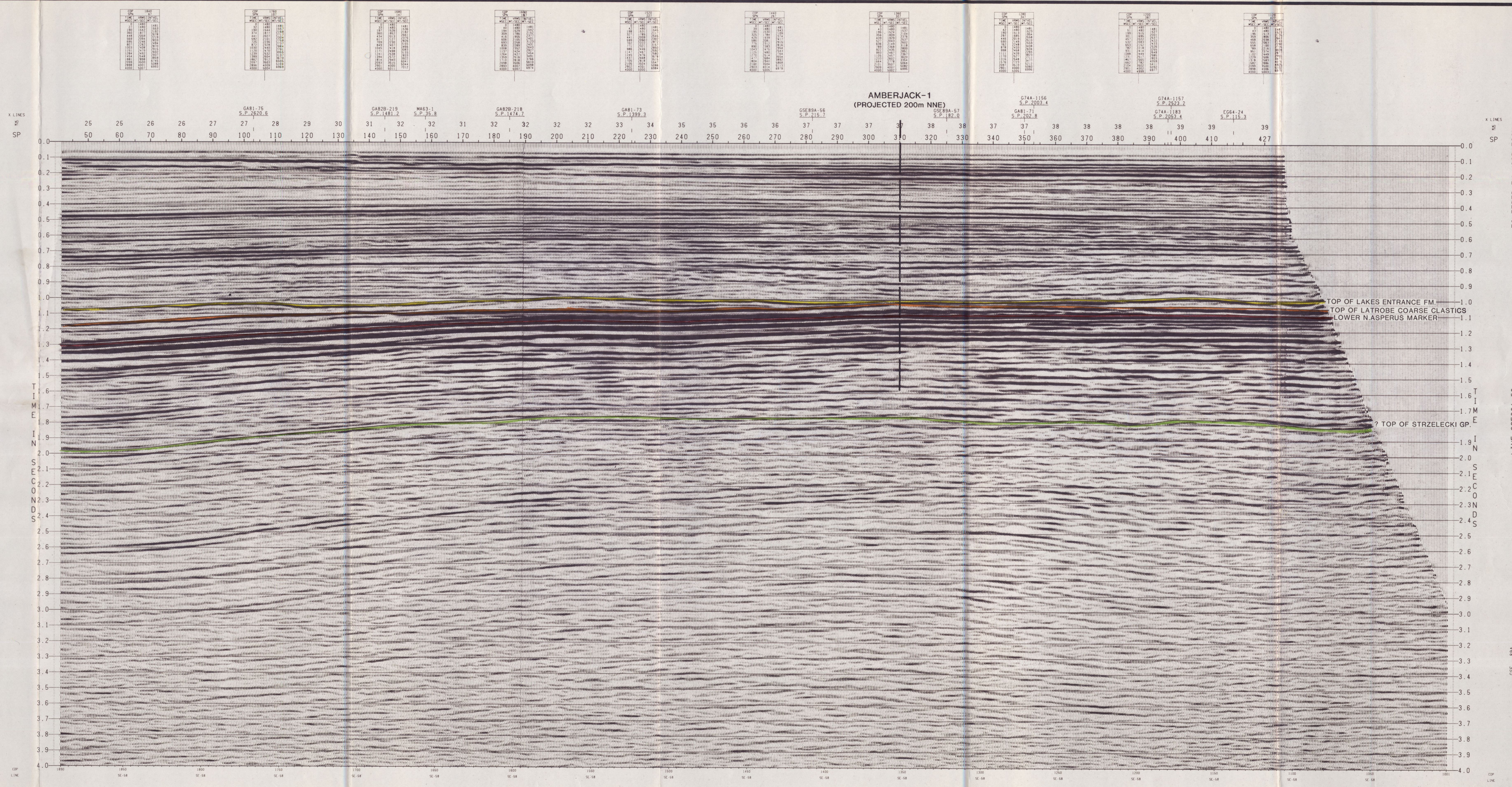
DIGITAL PROCESSING
POLARITY CONVENTION: THE POLARITY OF THE FIELD RECORDING WAS MAINTAINED THROUGHOUT THE PROCESSING AND DISPLAY
PROCESSING RECORD LENGTH: 4.0 SECONDS
PROCESSING SAMPLE PERIOD: REBUILT FROM 2MS TO 4 MS
DIFFERENTIAL MOVEOUT SMASH: TRACES BY 10 120 SUMMING 2 TRACES
MULTIPLIER RECOVERY FACTOR: 4.0 DB PER SECOND FROM 1 TO 3 0 SECONDS
SPHERICAL DIVERGENCE CORRECTIONS APPLIED
START TIME (MS): 185 400 2000
VELOCITY FILTERING (V): USING DIPS OF -20 TO 10 MTR IN THE SHOT DOMAIN
GAPPO DECONVOLUTION: WITH FULL COSINE RAMPING
VELOCITY ANALYSIS: CAP. 24 MS 2 X 200 MS OPERATIONS
NORMAL MOVEOUT CORRECTION: USING 11 DEPTH POINT VELOCITY ANALYSES
LOCALIZATION SCALING: LOCATED EVERY 1 KM
EQUALIZATION SCALING: USING ANNOTATED VELOCITIES
OUTSIDE TRACE NOTING: USING 2000 MS GATE
COMMON DEPTH POINT STACK: 285 400 2000
RUNNING TRACE MIX: RAMP LENGTH 7.24 MS
MIGRATION IN T-X DOMAIN: 100 210 280 748 1048 2088
MIGRATION VELOCITIES 100 PERCENT: 0 200 400 600 800 1200 2000
TIME VARIANT FILTERING: 14 FOLD COP STACK
TIME VARIANT SCALING: 0 400 MS
MIGRATION IN F-K DOMAIN: WITH DIP LIMIT OF 30 DEGREES
MIGRATION VELOCITIES 100 PERCENT: STACKING VELOCITIES ANNOTATED
FREQUENCY TIME GATES: 15 30 100 0
15 30 1000 0
15 30 4000 0
USING 120 MS FILTERING GATES

DISPLAY
HORIZONTAL SCALE: 10 000 TR/CW 80 000 TR/M
VERTICAL SCALE: 10 00 CW/CWIC
POLARITY: NORMAL
TRACE TYPE: BEAS
GAIN: 6 PERCENT
DATE: 27 NOV 1989
DISPLAY UNIT: 0.48882 CW



27 NOV 1989 08:45:10 PARTY 4558

HALLIBURTON GEOPHYSICAL SERVICE, INC.
A HALLIBURTON COMPANY
PROCESSING CHECKED BY: [Signature]



FILTERED FK MIGRATION

LINE GSE89A-58
S.P. 427 TO 36

GSE - 89A
VIC/P25 VIC/P25(V)
SOUTHEASTERN OIL & GAS P.L.

X LINES
SP

T
I
M
E
I
N
S
E
C
O
N
D
S

LINE GSE89A-58
S.P. 427 TO 36