

10 10 86 MIG

PHOENIX OIL AND GAS N.L.  
WOOLSTHORPE-1

SURVEY: BALLANGICH  
PERMIT: PEP 101  
STATE: VICTORIA  
AREA: WOOLSTHORPE- OTWAY BASIN  
LINE: OPX-86A-35  
U.P. 'S: 356 - 100  
MIGRATED STACK

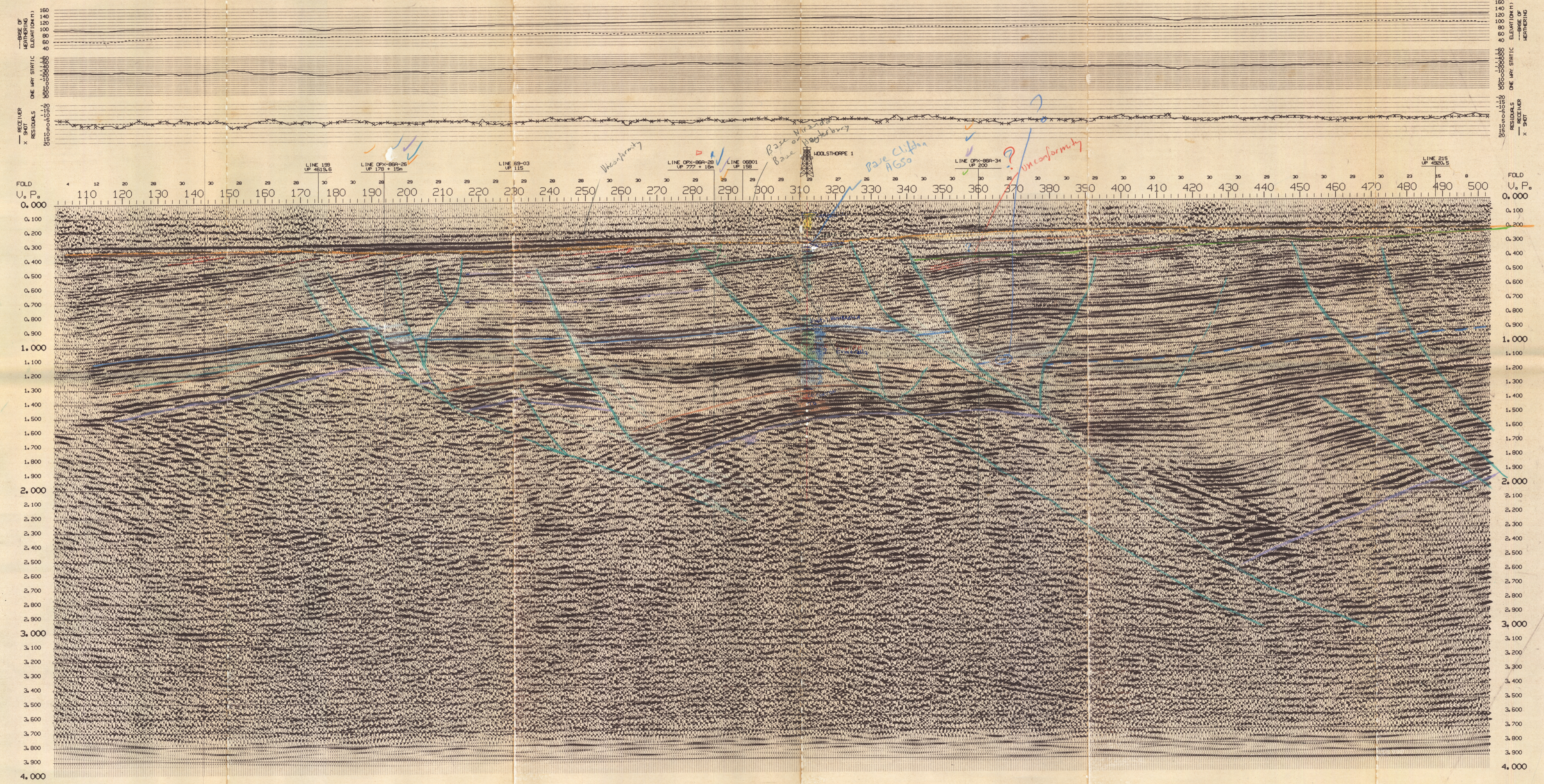
RECORDING PARAMETERS

RECORDED BY SEISCOM DELTA UNITED PARTY 4903  
SOURCE DATA  
ARRAY: 4 VIBRATORS IN LINE  
INSTRUMENT: DFSU/FT1  
INTERNAL: 12 M PAD TO PAD  
GAIN: 1FP  
VIBRATOR MOVEUP: 6 M  
FILTER: LOW- 12 HZ  
SWEEPS: 8 X 8 SEC  
HIGH- 128 HZ 72 DB/OCT  
SHEEP FREQUENCY: 16-96 HZ  
FIELD TAPE FORMAT  
SOURCE INTERVAL: 60 M  
UNCORRELATED STACK: SEGB 1600 BP1  
RECORD LENGTH: 13 SEC  
NO. CHANNELS: 120  
RECEIVER DATA  
GEOPHONE: GSC 200 10 HZ  
SAMPLE RATE: 2 MSEC  
GEOPHONE INTERVAL: 2.5 M  
RECORD LENGTH: 5 SECONDS  
FIELD TAPES: 43 TO 46  
GROUP INTERVAL: 30 M  
COVERAGE: 3000%  
SPREAD: 1845-75-X-75-1845 M  
DIRN OF SHOOTING: S-->N

SEQUENCE PROCESSING PARAMETERS  
TRANSCRIPTION TO PHOENIX 1 FORMAT - RESAMPLE TO 4 MSEC  
FK FILTER LOZENGE TYPE APPLIED TO HALF SPREAD AT A TIME  
GAIN RECOVERY ALPHA: 0.5  
DECONVOLUTION PREDICTIVE - 120 MSEC OPERATOR LENGTH  
TRACE EQUALIZATION 16 MSEC GAP - 1% NOISE 2 DESIGN GATES  
STATICS TO FLOATING DATUM ONLY  
NORMAL MOVEOUT REPLACEMENT VELOCITY: 1850 M/SEC  
INITIAL MUTE LEATHERING STATICS -  
DATUM STATICS HAND PICKED FROM REFRACTION BREAKS  
RESIDUAL STATICS VELOCITIES INTERPRETED FROM CUS ANALYSES  
CORRECTED TO SURFACE  
STACK OFFSET: 225 405 585 765 945 1665 1845 M  
FILTER TIME: 0 200 400 600 800 1200 1300 MSEC  
SCALING FLOATING DATUM TO DATUM  
MIGRATION DATUM: 100 METRES PLWD  
SURFACE CONSISTENT PLUS CDP TRIM

DISPLAY  
POLARITY: NEGATIVE VALUE ON TAPE DISPLAYED AS A TROUGH  
VERTICAL SCALE: 3.75 IN/SEC HORIZONTAL SCALE: 8.40 TR/M  
BIAS: ZERO GAIN REFERENCE LEVEL 78 DB  
SCALE 1:12596  
DATE RECORDED: FEB 86 DATE PROCESSED: MAY 86  
QUALITY CONTROL: A. De Loria

HOSKING GEOPHYSICAL CORP.  
(AUSTRALIA)

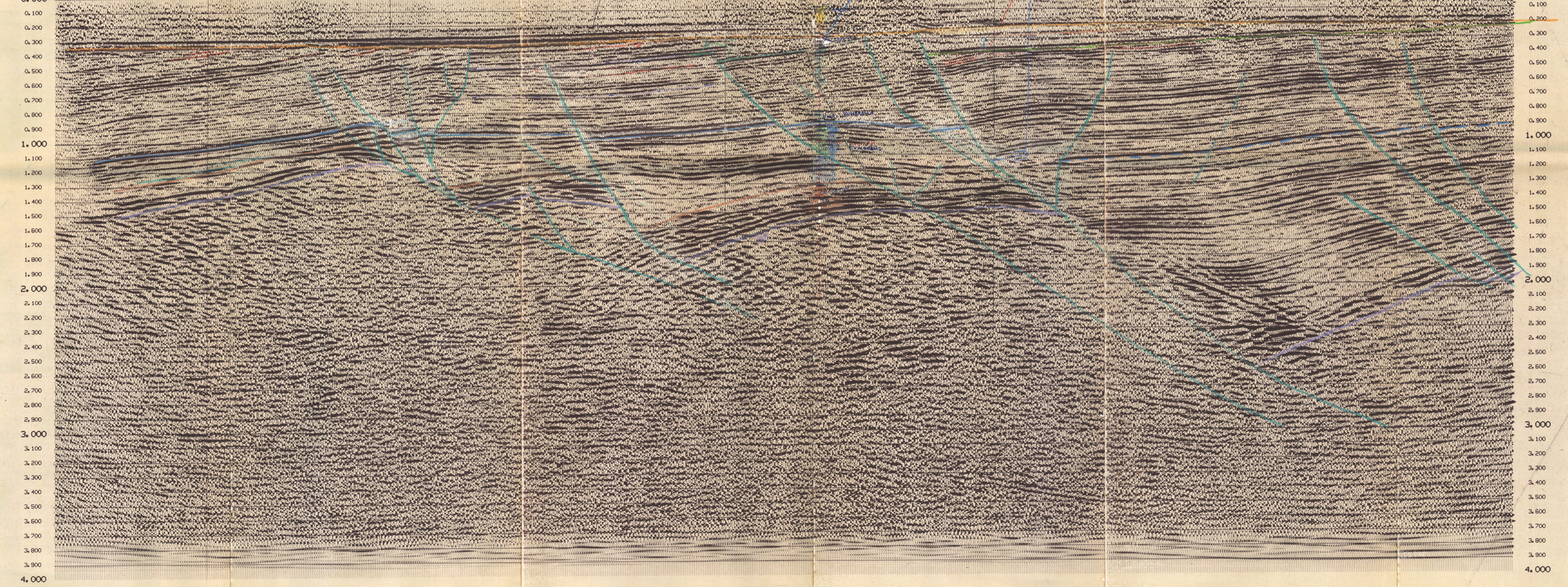


NORTH

RECEIVER RESIDUALS  
X SPOT  
ONE WAY STATIC  
ELEVATION (M)  
160  
140  
120  
100  
80  
60  
40  
20  
0

RECEIVER RESIDUALS  
X SPOT  
ONE WAY STATIC  
ELEVATION (M)  
160  
140  
120  
100  
80  
60  
40  
20  
0

FOLD U.P. 0.000  
110 120 130 140 150 160 170 180 190 200 210 220 230 240 250 260 270 280 290 300 310 320 330 340 350 360 370 380 390 400 410 420 430 440 450 460 470 480 490 500



FOLD U.P. 0.000  
0.100  
0.200  
0.300  
0.400  
0.500  
0.600  
0.700  
0.800  
0.900  
1.000  
1.100  
1.200  
1.300  
1.400  
1.500  
1.600  
1.700  
1.800  
1.900  
2.000  
2.100  
2.200  
2.300  
2.400  
2.500  
2.600  
2.700  
2.800  
2.900  
3.000  
3.100  
3.200  
3.300  
3.400  
3.500  
3.600  
3.700  
3.800  
3.900  
4.000