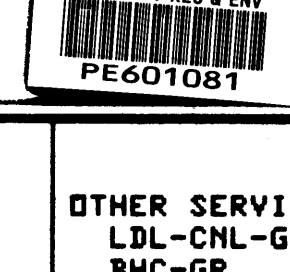


DLL-MSFL-GR WILSON # 1 SUITE 1

1:500



COMPANY: BEACH PETROLEUM N.L.
 WELL: WILSON # 1
 FIELD: WILDCAT
 RIG: D.D.E. # 19
 STATE: VICTORIA
 NATION: AUSTRALIA
 LOCATION: OTWAY BASIN

OTHER SERVICES-
 LDL-CNL-GR
 BHC-GR
 SHDT-GR
 MST
 CST

LATITUDE: 37° 56' 22.4S
 LONGITUDE: 141° 08' 31.9E

PERMANENT DATUM: MSL
 ELEV. OF PERM. DATUM: KB 312.4 M
 LOG MEASURED FROM: KB 312.4 M
 56.2 M ABOVE PERM. DATUM
 DRLG. MEASURED FROM: KB

ELEVATIONS-
 KB: 312.4 M
 DF: 35.9 M
 GL: 31.6 M

PROGRAM
 TAPE NO: 28.4
 SERVICE
 ORDER NO:

DATE: 23 JUL 87
 RUN NO: 1

DEPTH-DRILLER: 1317.0 M
 DEPTH-LOGGER: 1315.5 M
 BTM. LOG INTERVAL: 1311.0 M
 TOP LOG INTERVAL: 312.5 M

CASING-DRILLER: 15.5 M 312.4 M
 CASING-LOGGER: 16 312.4 M
 CASING: 16 9 5/8
 WEIGHT: 55.0000 LB/F 36.0000 LB/F
 BIT SIZE: 17 1/2 12 1/4 8 1/2
 DEPTH: 16.5 M 316.0 M 1317.0 M

TYPE FLUID IN HOLE: KCL / GEL / CMC
 DENSITY: 9.20 LB/G
 VISCOSITY: 40.0 S
 PH: 9.5
 FLUID LOSS: 8.0 C3
 SOURCE OF SAMPLE: FLOWLINE

RM: .428 DHMM AT 49.1 DEGF
 RMF: .321 DHMM AT 42.8 DEGF
 RMC: .348 DHMM AT 45.5 DEGF

SOURCE RMF/RMC: PRESS /PRESS
 RM AT BHT: .189 DHMM AT 120. DEGF
 RMF AT BHT: .126 DHMM AT 120. DEGF
 RMC AT BHT: .144 DHMM AT 120. DEGF

TIME CIRC. STOPPED: 16140 (23)
 TIME LOGGER ON BTM.: 21116(23)

MAX. REC. TEMP: 120.0 DEGF

LOGGING UNIT NO: 822
 LOGGING UNIT LOC: YEA
 RECORDED BY: J. PATEL
 WITNESSED BY: J. BOHLER

REMARKS:
 DLT TOOL RUN CENTRALISED WITH THREE RUBBER STANDOFFS.
 BHT THERMOMETERS (TWO) DESCENDED TO 1297 M.
 MSFL DISALLOWED AFTER 1000 M AT CLIENT REQUEST

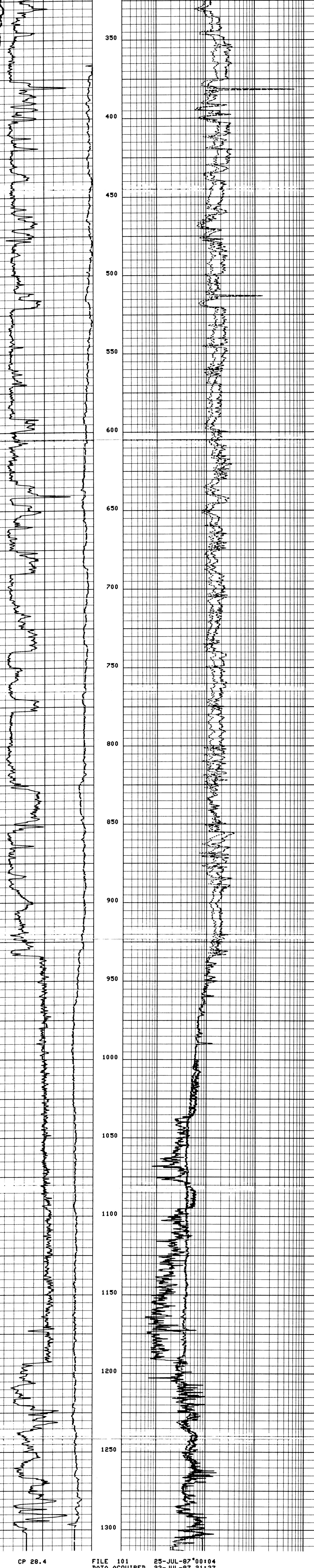
EQUIPMENT NUMBERS-
 DLS E 765 DLC BB 1971 DLE DB 1758 DRS C 788
 SRE CB 1958 SRA A 768 SGC JC 3395 DLM B 1830
 HRM AB 3829 NSM A 2866 GSR U

ALL INTERPRETATIONS ARE OPINIONS BASED ON INFERENCES FROM ELECTRICAL OR OTHER MEASUREMENTS AND WE CANNOT, AND DO NOT GUARANTEE THE ACCURACY OR CORRECTNESS OF ANY INTERPRETATIONS, AND WE SHALL NOT, EXCEPT IN THE CASE OF GROSS OR WILLFUL NEGLIGENCE ON OUR PART, BE LIABLE OR RESPONSIBLE FOR ANY LOSS, COSTS, DAMAGES OR EXPENSES INCURRED OR SUSTAINED BY ANYONE RESULTING FROM ANY INTERPRETATION MADE BY ANY OF OUR OFFICERS, AGENTS OR EMPLOYEES. THESE INTERPRETATIONS ARE ALSO SUBJECT TO OUR GENERAL TERMS AND CONDITIONS AS SET OUT IN OUR CURRENT PRICE SCHEDULE.

CP 28.4 FILE 102 25-JUL-87 00:17
 DATA ACQUIRED 23-JUL-87 23:03

GR (GAPI)	200.00	.20000	LLS (DHMM)	2000.0
SP (MV)	20.000	.20000	LLD (DHMM)	2000.0
-80.00				

CP 28.4 FILE 101 25-JUL-87 00:14
 DATA ACQUIRED 23-JUL-87 23:03



CP 28.4 FILE 101 25-JUL-87 00:04
 DATA ACQUIRED 23-JUL-87 21:37

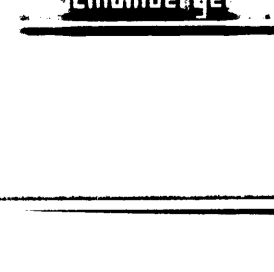
GR (GAPI)	200.00	.20000	MSFL (DHMM)	2000.0
SP (MV)	20.000	.20000	LLS (DHMM)	2000.0
-80.00		.20000	LLD (DHMM)	2000.0

SENSOR MEASURE POINT TO TOOL ZERO

CALI 10.24 METER	GR 15.72 METER
SIO 4.55 METER	SI90 4.55 METER
SVO 4.55 METER	SV90 4.55 METER
DIO 4.55 METER	DI90 4.55 METER
DVO 4.55 METER	DV90 4.55 METER
SPAR 19.46 METER	SP 19.46 METER
LLD 4.55 METER	TENS 4.55 METER
II 10.21 METER	LLS 4.55 METER
CMSF 10.13 METER	

PARAMETERS

NAME	VALUE	UNIT	NAME	VALUE	UNIT
SPT	STAN		HMUD	9.20000	LB/G
BS	8.50000	IN	BHS	OPEN	
PP	NRM		DD	0.0	M



DLL-MSFL-GR WILSON # 1 SUITE 1

